

RV700-112

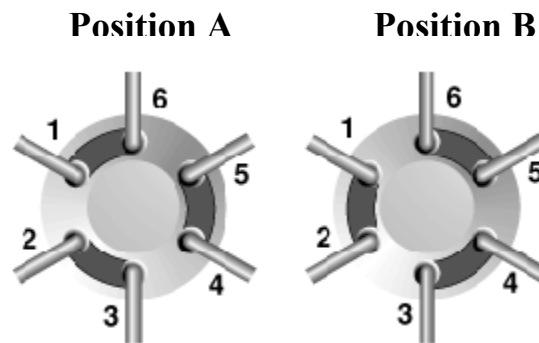
2-Position, 6-Port

Description

The RV700-112 is a stainless steel 2-position, 6-port motorized valve.

Flow Diagram

The flow-switching pattern of the valve is shown below. The numbered circles represent the ports in the valve stator and stator face assembly. The dark slots represent the connecting passages in the rotor seal.



Specifications

Liquid Contacts: Stainless steel, PEEK

Port Size: Accepts 10-32 male threaded fittings

Flow Passage Diameters: 1.0-mm (.040")

Volume in Flow Passages: *Stator-* (includes stator face assembly)- 4.9µL/hole,

Rotor Seal- 3.1µL/groove

Maximum Pressure: 21 MPa, 207 bar, 3000 psi

Motor: Power train design includes a stepper motor and planetary gearing system

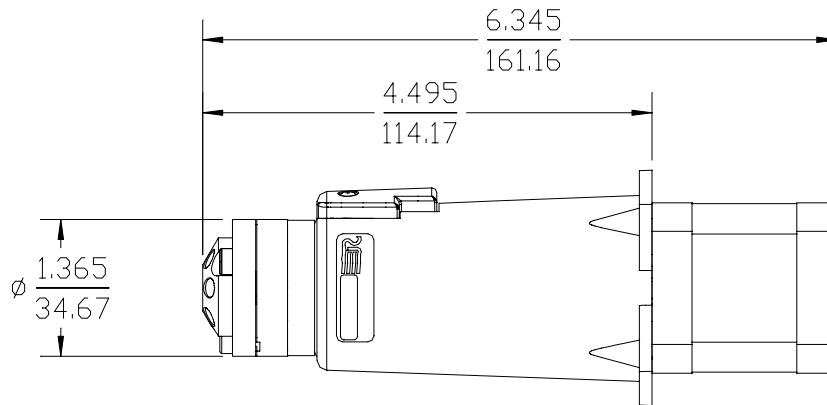
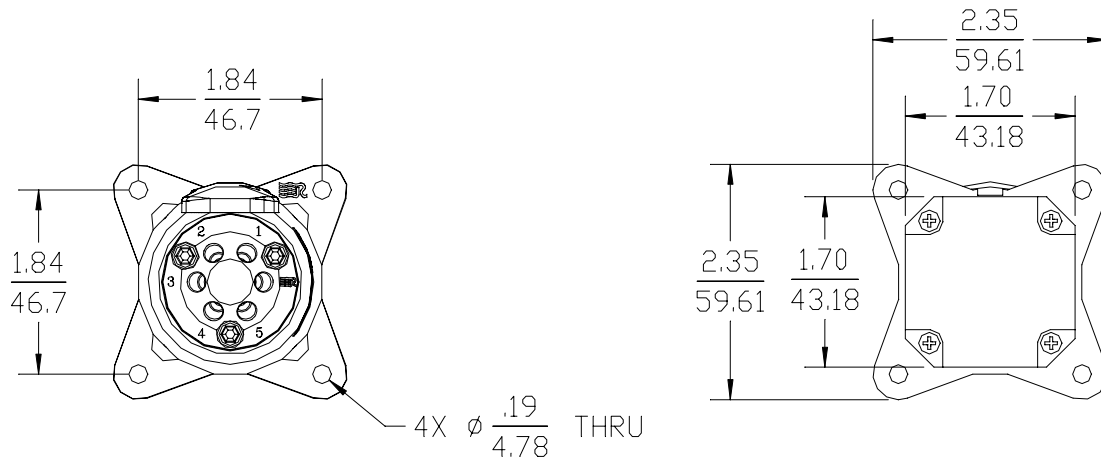
Motor Power Requirements: 24-35 VDC at 2.0 amp

Position Sensors: Optoelectric position sensors with encoder wheels

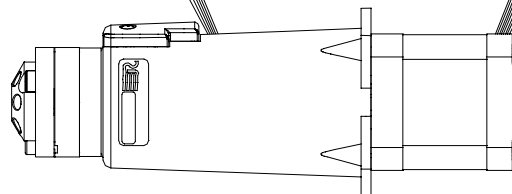
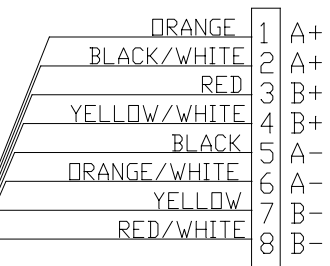
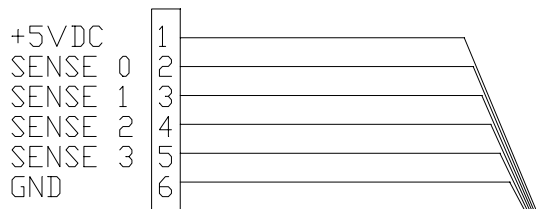
NOTE: Shipping, storing or operating this valve below 0°C with water in the fluid passages may cause failure of the sealing surfaces.

Dimensional Drawings on page 2

Dimensions are in inches/millimeters



ENCODER POSITION
FEEDBACK CONNECTOR
(MOLEX 50-57-9406)



MOTOR CONTROLLER
LINES CONNECTOR
(MOLEX 22-01-2085)