

Explosion Proof Peristaltic Pump

Suitable Pump Head

QD600



New Generation Easy Load Type Pump Head



YZ Series



New Generation Multichannel Type pump Head



DZ25-3L

Features

Pneumatic motor driver, gas driving, explosion-proof and safe.

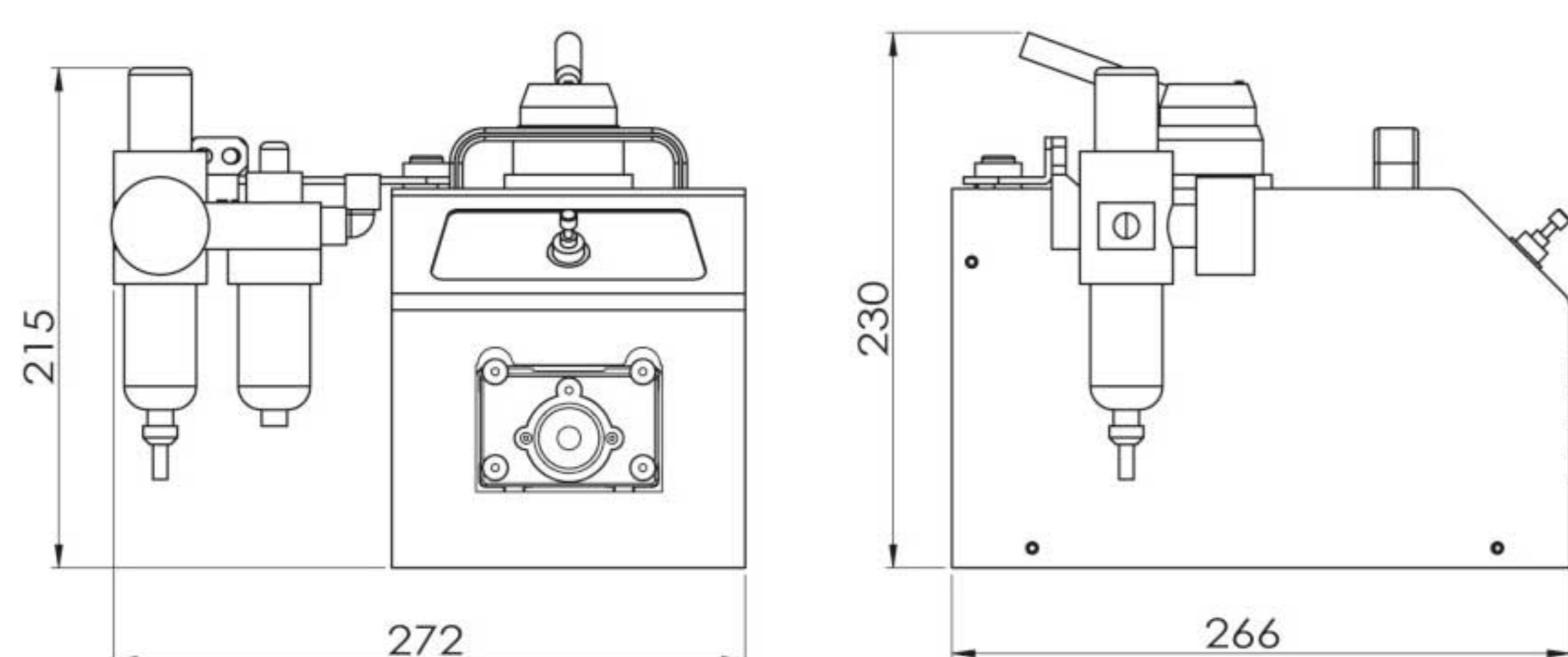
Stepless speed regulation, manual control flow valve. Start/stop, direction, overload protection functions.

Barometer, convenient for users to check the pressure value.

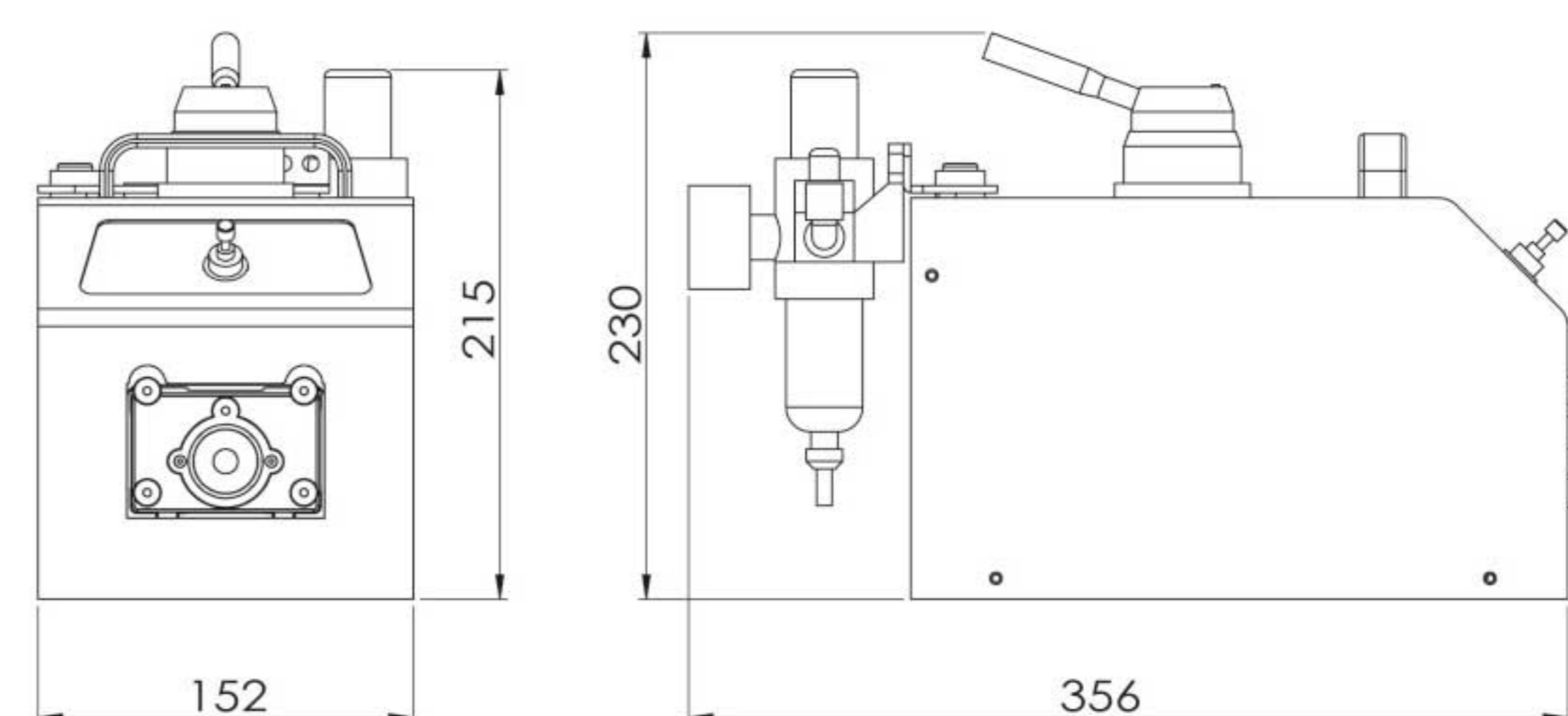
Suitable for inflammable, explosive industrial sites.

Dimension Drawing (Unit: mm)

Working status dimension drawing



Non-working status dimension drawing



Technical Specifications

Speed range	60~600 rpm	Drive dimension (L x W x H)	Working: 266x 272 x 230mm
Display	Display air pressure		Non-working: 356x 152 x 230mm
Speed control	stepless speed regulation (By adjusting the flow valve)	Drive weight	4.10 kg
Control function	Start/stop, reversing (gas reversing valve control)	Condition temperature	0-40°C
Working air pressure	0.1-0.4Mpa	Relative humidity	< 80%
Gas consumption	4L/Sec	IP rate	IP31

Product Composition and Flow Rate Range

Peristaltic Pump		Pump Head & Flow Rate (mL/min)			
		YZ1515x	YZ2515x	MC1~MC12(10)	DZ25-3L
Drive & Speed	Tubing	13#, 14#, 19#, 16# 25#, 17#, 18#	15#, 24#	Inner diameter: 0.13-3.17mm Wall thickness: 0.8-1mm	15#, 24#, 35#, 36#
	QD600	60-600rpm	5~2280	100~1740	0.111-65 (working speed ≤ 150rpm)

