

Easy Load Pump Head

YZ35-PPS,YZ35(Aluminum Alloy)



(3 rollers)

Model Number

| YZ35-PPS, YZ35(Aluminum Alloy)

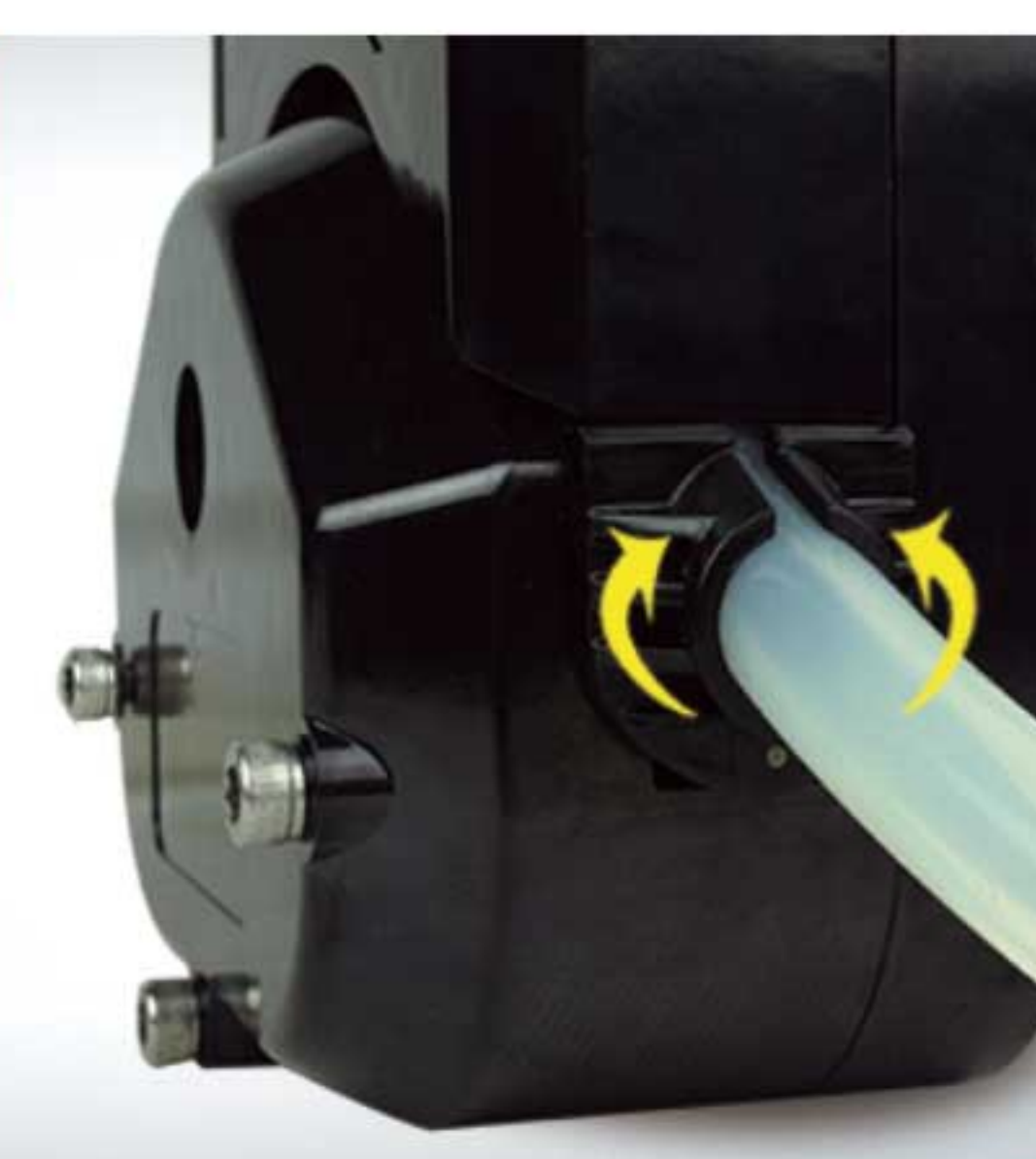


Product Introduction

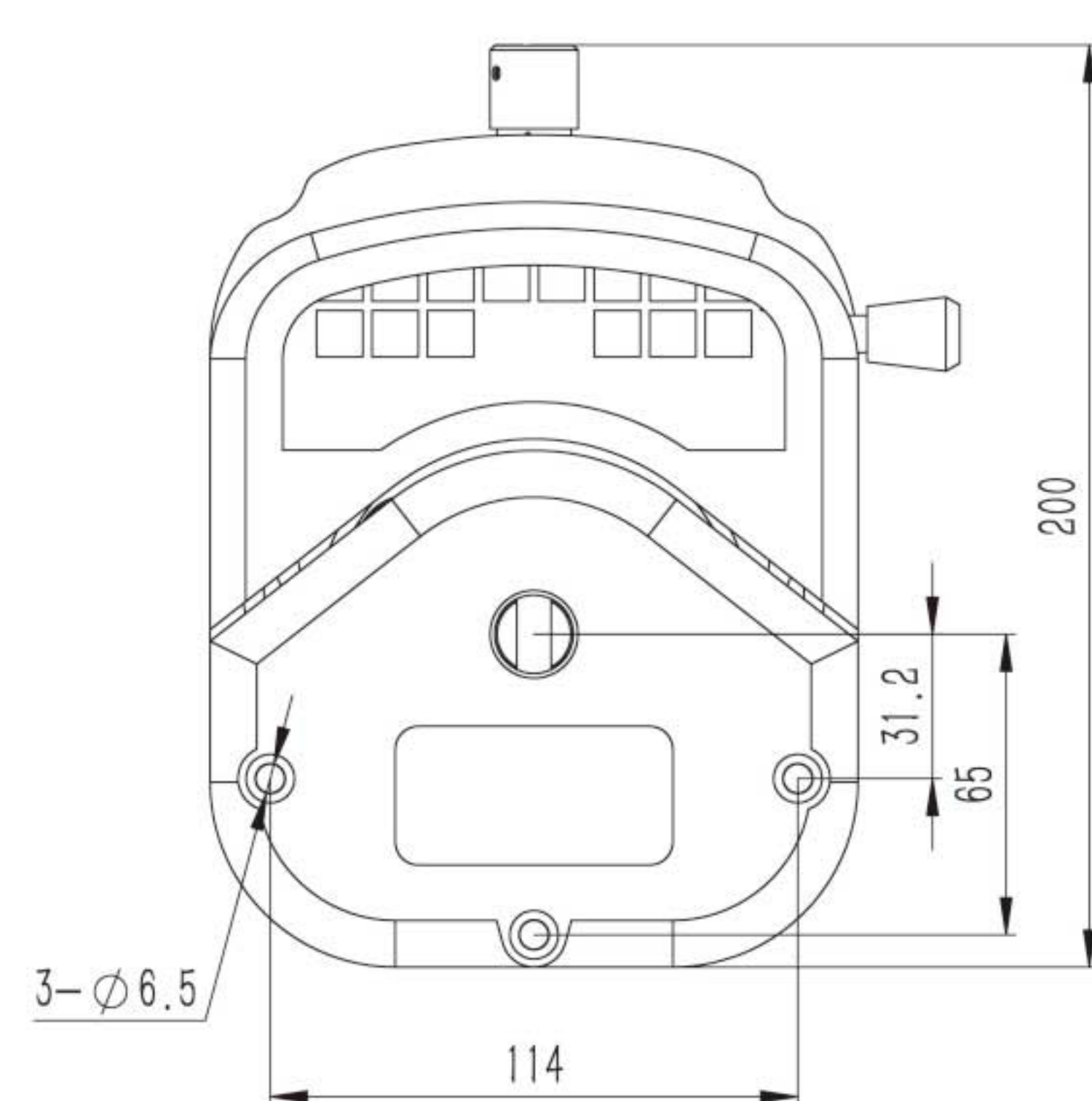
YZ35 pump head with aluminum alloy or PPS housing material. 304 stainless steel rollers assembly achieve high precision transferring liquid. Adaptive tubing cartridge structure makes it more easy to load the tubing.

YZ35 Pump Head Tubing Holder Advantages

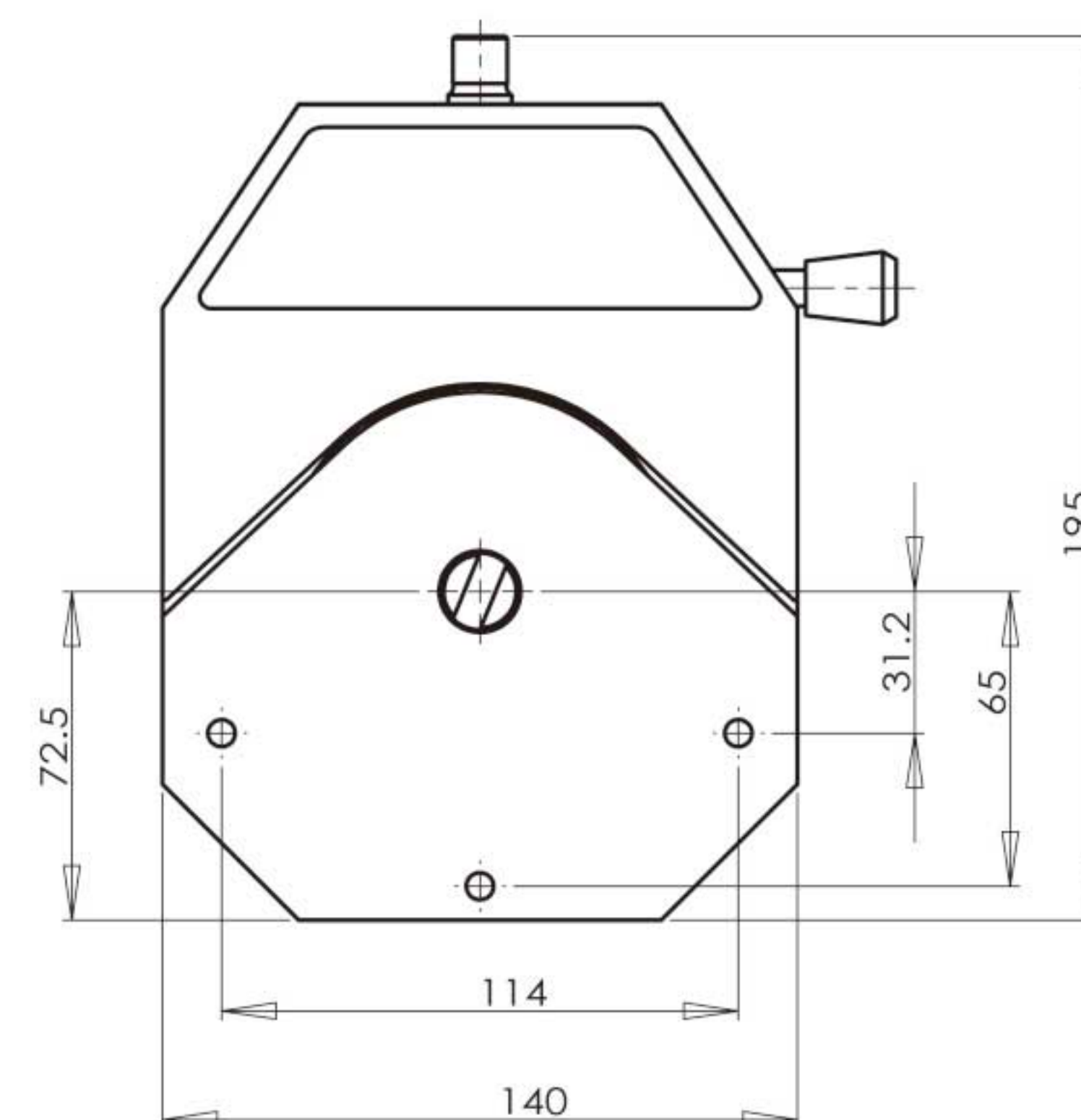
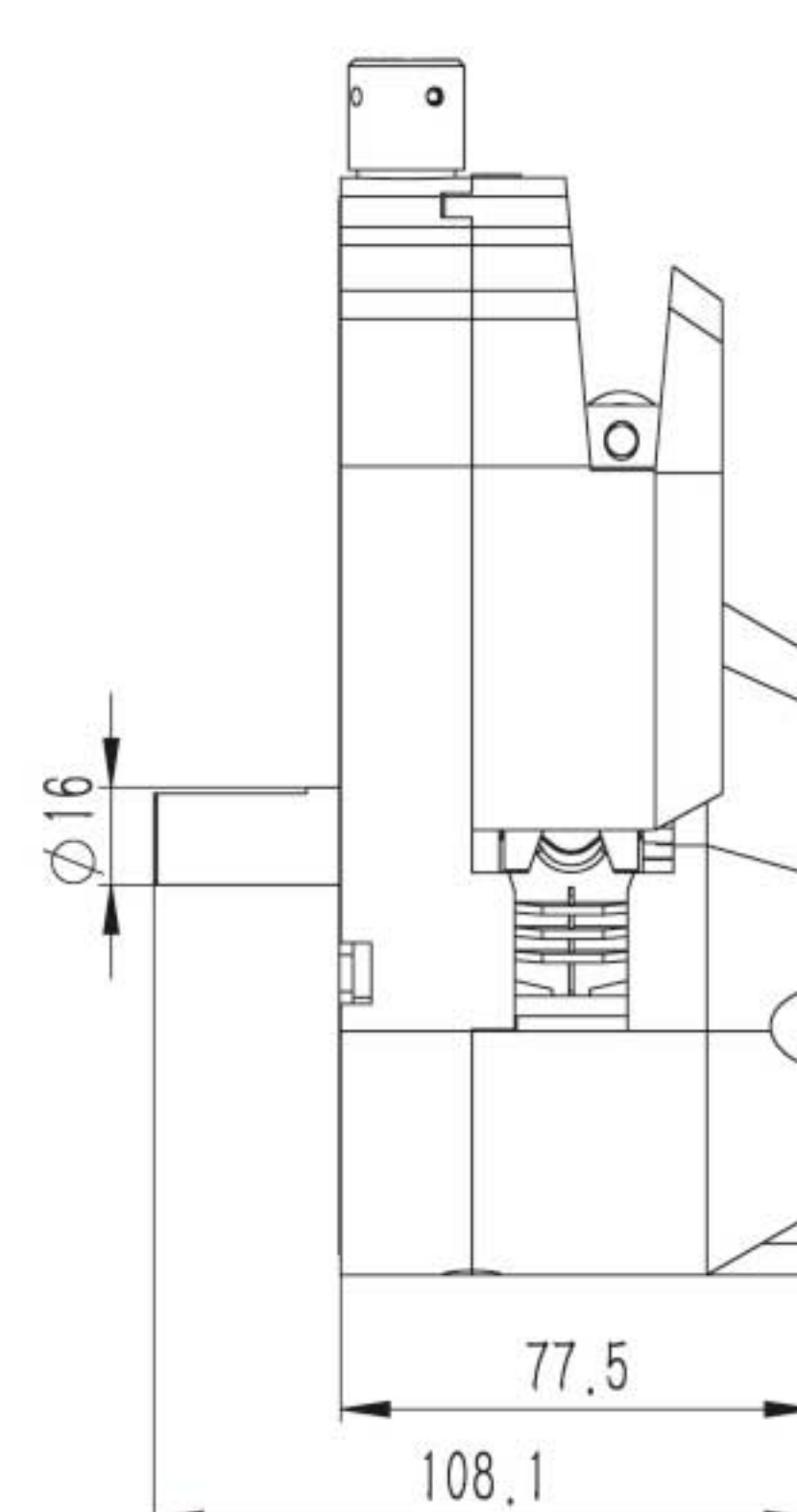
- 01/ Fix the tubing; lower the tubing shaking during working; **improve the stability and accuracy of flow rate.**
- 02/ Prevent the tubing wear, **extend the tubing lifetime.**



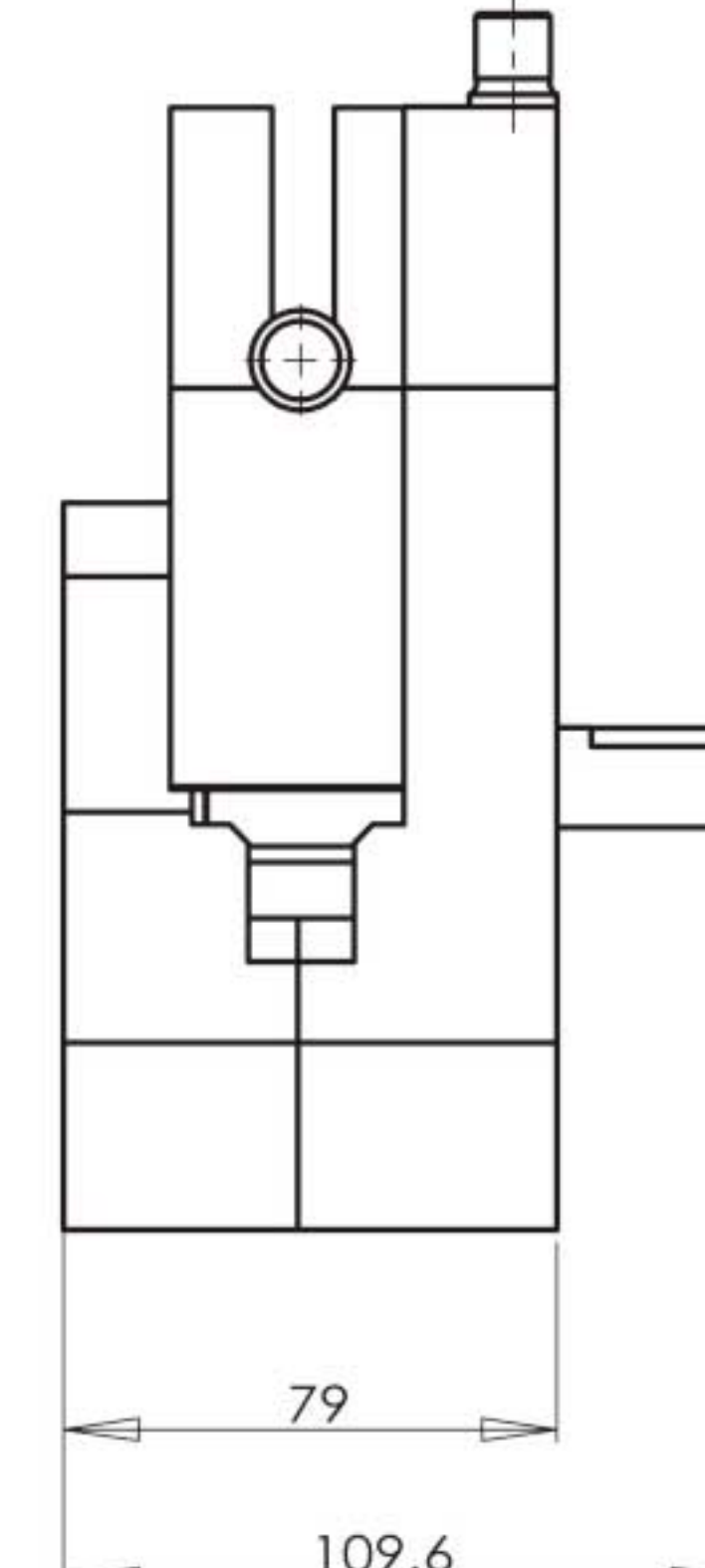
Dimension Drawing(Unit: mm)



YZ35-PPS



YZ35-Aluminum Alloy



Experimental conditions: standard atmospheric pressure, room temperature at 20°C, the liquid is pure water, no pressure, no suction and lift.

Note: Actually, it is affected by many factors such as transmission medium, inlet and outlet pressure, hose material and error, working environment, etc. This data is for reference only.

Technical Specifications

Pump Head	Tubing	ID×Wall Thickness(mm)	mL / r	Flow Rate(mL/min) (0-600rpm)	Tubing Max. Pressure(Mpa)		Material/Weight(kg)	
					Intermittent	Continuous	Aluminum Alloy	PPS
YZ35	26#	6.4 × 3.3	6.9	0.69~4200	0.27	0.2	4.36	1.50
	73#	9.6 × 3.3	12.3	1.23~7400				
	82#	12.7 × 3.3	20	2~12000	0.14	0.1		