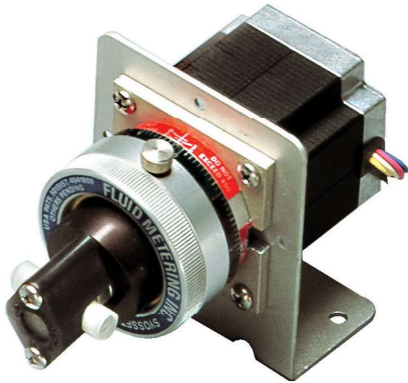


Production - OEM - Lab



STRH

STRH

Adjustable Low Flow Stepper Pump

Meter, Dispense, Aspirate, Flush

- Precision **RH** adjustable pump with stepper motor
- Valveless, reversible, self priming
- Ceramic and fluorocarbon, low dead-volume fluid path
- Ideal for prototyping
- Optical sensor

MAX. Dispense Rates	Wetted Parts	Complete Pump Assembly
Microliters / Revolution		
0 - 25 μ L	Zirconia / PVDF / Ceramic	STRH00ZKCLF
0 - 50 μ L	Ceramic / PVDF	STRHOCKCLF
0 - 100 μ L	Ceramic / PVDF	STRH1CKCLF

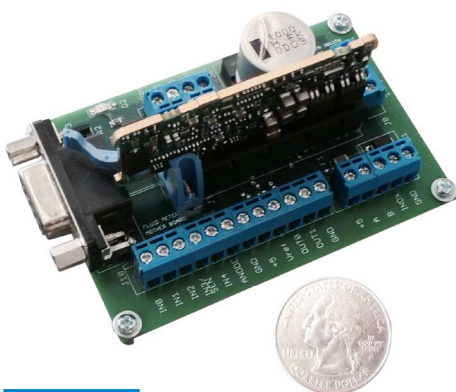


STQP

STQP

Adjustable High Flow Stepper Pump

- Precision, variable displacement **Q** Pump with integral stepper motor
- Accommodates all **Q** style pump heads and **RH** pump heads (with **RH/Q** adapter)
- Ideal for OEM applications where accurate & frequent displacement changes are expected
- Available in **ST2QP Duplex Ratio:Matic**[®] configurations
- Ideal for prototyping
- Can be driven by FMI's **ICST-02**, or a variety of commercially available stepper driver boards



ICST-02

ICST-02

Stepper Control

- Programmable control for all FMI Stepper Pumps
- Extensive dispense & metering capabilities
- Multiple input and output connections
- RS 232 Serial Port for PC connection
- MS Windows[®] programming software included
- Compact size : 2.0" x 3.1" x 1.6" high (51 x 79 x 41 mm)

OEM Dispensers / Pumps

High Precision Stepper Motor Pumps for OEM Applications

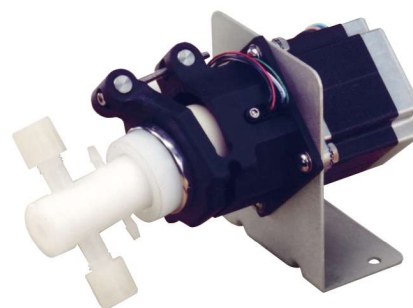
- Ceramic and fluorocarbon fluid path
- Displacement of 0 to 1280 microliters (1.28 mL) per revolution
- Excellent chemical resistance
- 1.8° stepper motors with opto sensors



STH

Low Flow STH

MAX. Dispense Rates	Wetted Parts	Complete Pump Assembly
Microliters / Revolution		
0 - 25 µL	Zirconia / PVDF / Ceramic	STH00ZKCLF
0 - 50 µL	Ceramic / PVDF	STH0CKCLF
0 - 100 µL	Ceramic / PVDF	STH1CKCLF
0 - 200 µL	Ceramic / PVDF	STH2CKC



STQ

High Flow STQ

MAX. Dispense Rates	Wetted Parts	Complete Pump Assembly
Microliters / Revolution		
0 - 320 µL	Ceramic / PVDF	STQ1CKC
0 - 720 µL	Ceramic / PVDF	STQ2CKC
0 - 1280 µL	Ceramic / PVDF	STQ3CKC

Brushless DC Pump

Instrumentation Pump for Wash & Fluid Transfer

- 24 V brushless DC motor
- Fixed displacement, factory calibrated to your specifications
- Compact design with integral electronics

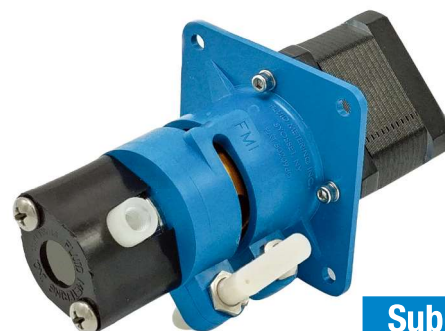


BDC

Sub-1 Pump

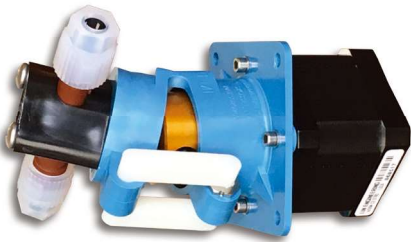
Sub-Microliter Dispensing Pump

- Patent pending Adjustable Dual Eccentric bushings for precise flow calibration
- Dispense volume as low as 1 µL / stroke
- Four pump heads available



Sub-1

OEM Dispensers / Pumps



STF1-9

STF1-9 Valveless 400µL Dispensing Pump

Ideal for OEM Metering & Dispensing Applications

- Compact design
- Larger piston allows higher dispense / metering rate
- 9 pump drives and 4 pump heads - 36 possible configurations

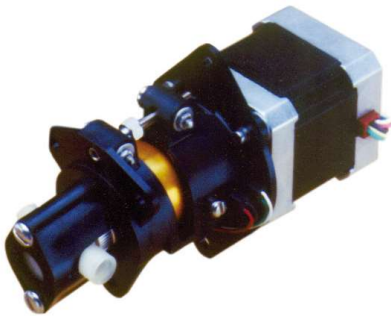


STF

STF Fixed Displacement Pump

Ideal for waste, wash, and flush fluid control in medical instrumentation

- Economical design with fixed displacement link
- Precision stepper motors with opto sensors
- Available in 25µL, 50µL, 100µL, & 200µL versions or custom
- Isolation gland available for crystallizing fluids



STH2

STH2 200µL STH Pump

Ideal for reagent dispensing in clinical chemistry applications

- Extended dispense and flow range in a compact OEM design
- Precision, high-torque stepper with opto sensor
- High performance, extended-life, seal configuration



H-W

Isolation
Gland Port

H-W Isolation Gland Pump

Miniature OEM pump with isolation gland ideal for low volume fluid control of crystal forming fluids

- Easily handles saline, slurries, particulates and abrasives
- Isolates main process fluid from seal area & atmosphere
- Barbed fittings provide quick connections to gland ports