



Chromatography Columns

Teknokroma사의 최신 분석기술을
레보딕스에서 공급합니다



Teknokroma GC Column Product Line Up

GC 분석에 알맞은 다양한 길이와 규격
Capillary Column Product

TRB-xx

Low Bleed General Applications (FID/ECD)

TRB-MS

Ultra Low Bleed (MS) Applications

TRB-HT

Ultra Low Bleed High Temp.
(400°C fused silica)

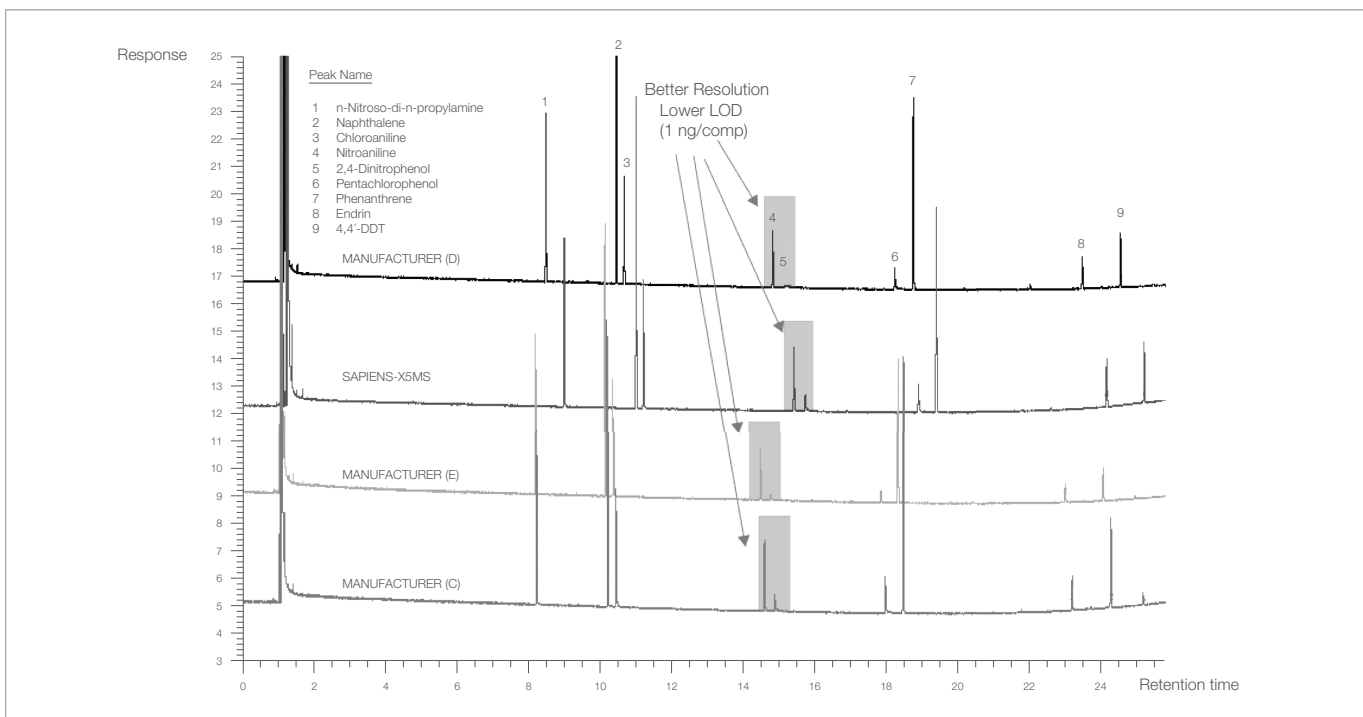
SAPIENS-MS

The 3rd Generation GC col.

Ultra Low Bleed &
Ultra Inertness (MS) Applications



- Teknokroma사의 최신 기술로 만들어진 Sapiens-MS 컬럼은 극미량의 샘플 분석에서 경쟁사 제품에 비해 더욱 향상된 Performance를 보여 줍니다.



GC Application

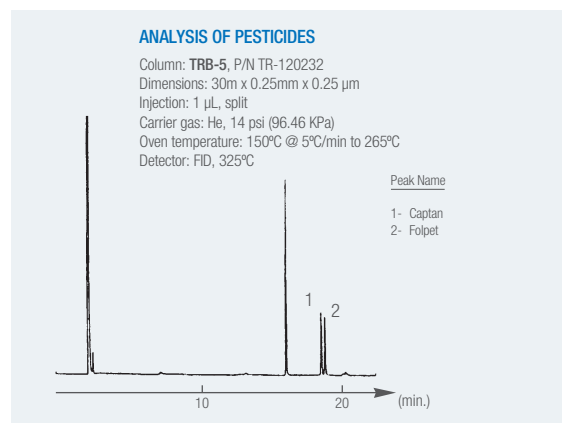
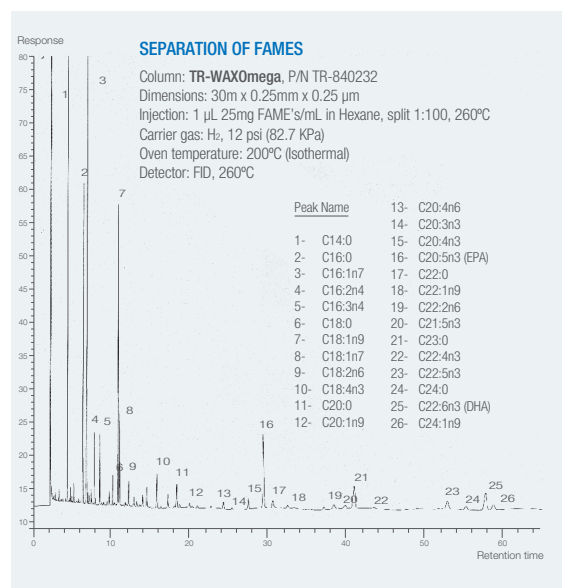
EPA, USP, ASTM 등 주요 Method 총족

USP CODE

USP CODE	General Description	Teknokroma Recommended Capillary Equivalent
G1	Dimethylpolysiloxane oil	TRB-1, TRB-1ms
G2	Dimethylpolysiloxane gum	TRB-1, TRB-1ms
G3	50% phenyl-50%methylpolysiloxane	TRB-50
G5	3-cyanopropylsiloxane	TR-CN100
G6	Poly(ethylenepropylene)glycol	TRB-F50
G8	90%-3-cyanopropyl-10% phenylmethylsiloxane	TR-CN100
G9	Methylvinylpolysiloxane	TRB-1, TRB-1ms
G14	Polyethylene glycol (MW = 951-1050)	TRB-WAX
G15	Polyethylene glycol (MW = 3000-3070)	TRB-WAX
G16	Polyethylene glycol (MW = 15000)	TRB-WAX
G19	25% phenyl-25%cyanopropylmethylsiloxane	TRB-225
G20	Polyethylene glycol (MW = 400-420)	Meta.WAX 400
G25	Polyethylene glycol TPA	TRB-FFAP
G27	5% phenyl-95%methylpolysiloxane	TRB-5, TRB-5ms, Meta.X5
G28	25% phenyl-75%-dimethylpolysiloxane	TRB-20
G32	20% phenylmethyl-80%-dimethylpolysiloxane	TRB-20
G35	Polyethylene glycol with Nitroterephthalic acid	TRB-FFAP
G36	1%vinyl-5% phenylmethylpolysiloxane	TRB-5, TRB-5ms, Meta.X5
G39	Polyethylene glycol (MW=1500)	TRB-WAX
G42	35% diphenyl-65% dimethylpolysiloxane	TRB-35
G43	6%cyanopropylphenyl-94% dimethylpolysiloxane	TRB-624, TRB-1301, TR-G43
G46	14%cyanopropylphenyl-86% dimethylpolysiloxane	TRB-1701

EPA Method

Method	Teknokroma P/N	Teknokroma Phase Recommendation	Sample
D1983	TR-882162	TR-CN100 60 m x 0.25 mm x 0.2 μm	FAME analysis
D2245	TR-882162	TR-CN100 60 m x 0.25 mm x 0.2 μm	Oils and oil acids in solvent-reducible paints
D2267	TR-960462	TR-TCEP 60 m x 0.25 mm x 0.40 μm	Aromatics in light naphthas and aviation gasolines
D2306	TR-140262	TRB-WAX 60 m x 0.25 mm x 0.25 μm	C8 aromatic hydrocarbons
D2360	TR-140263	TRB-WAX 60 m x 0.32 mm x 0.25 μm	Trace impurities in monocyclic aromatic hydrocarbons and total aromatic determination
D2426	TR-111535	TRB-1 30 m x 0.53 mm x 1.5 μm	Butadiene dimer and styrene in butadiene concentrates
D2456	TR-141035	TRB-WAX 30 m x 0.53 mm x 1.0 μm	Polyhydric alcohols in alkyl resins
D2505	TR-115035	TRB-1 30 m x 0.53 mm x 5 μm	Ethylene, other hydrocarbons, and carbon dioxide in dioxide in high-purity ethylene
D2597		30% SE-30 on Chromosorb PAW 80/100 - Molecular Sieve 13X 45/60	Analysis of demethanized hydrocarbon liquid mixtures containing nitrogen and carbon dioxide
D2580	TR-820423	Meta.X5 25 m x 0.32 mm x 0.4 μm	Phenols in water
	TR-151035	TRB-FFAP 30 m x 0.53 mm x 1.0 μm	
D2600	TR-960462	TR-TCEP 60 m x 0.25 mm x 0.4 μm	Aromatic traces in light saturated hydrocarbons
	TR-141223	TRB-WAX 25 m x 0.32 mm x 1.2 μm	
D2743	TR-882162	TR-CN100 60 m x 0.25 mm x 0.2 μm	Oil and oil acids
D2800	TR-882162	TR-CN100 60 m x 0.25 mm x 0.2 μm	FAME analysis
D2804	TR-141035	TRB-WAX 30 m x 0.53 mm x 1.0 μm	Purity of methyl ethyl ketone
	TR-571015	RB-F50 15 m x 0.53 mm x 1.0 μm	
D2887	TR-112645	TRB-1 10 m x 0.53 mm x 2.65 μm	Boiling range distribution of petroleum
Extended	TR-1108A5	TRB-1 5 m x 0.53 mm x 0.88 μm	Volatile organics in water
	TR-601833	TRB-624 30 m x 0.32 mm x 1.8 μm	
	TR-603035	TRB-624 30 m x 0.53 mm x 3.0 μm	
D2908	TR-140533	TRB-WAX 30 m x 0.32 mm x 0.5 μm	Polyhydric alcohols in alkyl resins
	TR-141035	TRB-WAX 30 m x 0.53 mm x 1.0 μm	
D2998	TR-111033	TRB-1 30 m x 0.32 mm x 1.0 μm	Monopentaerythritol in commercial pentaerythritol
D2999	TR-111535	TRB-1 30 m x 0.53 mm x 1.5 μm	
D3009	TR-140533	TRB-WAX 30 m x 0.32 mm x 0.5 μm	Composition of turpentine
	TR-141035	TRB-WAX 30 m x 0.53 mm x 1.0 μm	
D3054	TR-110553	TRB-1 50 m x 0.32 mm x 0.5 μm	Impurities in cyclohexane
D3086	TR-120752	TRB-5 50 m x 0.25 mm x 0.12 μm	Organochlorine pesticides in water
D3168	TR-111033	TRB-1 30 m x 0.32 mm x 1.0 μm	Polymers in emulsion paints
	TR-111535	TRB-1 30 m x 0.53 mm x 1.5 μm	
D3257		25% bis-(2-cyanoethyl) formamide on Chromosorb PAW	Aromatics in mineral spirits
D3271	TR-141035	TRB-1 30 m x 0.53 mm x 1.0 μm	Solvent analysis in paints
D3304	TR-120752	TRB-5 50 m x 0.25 mm x 0.12 μm	PCBs in environmental materials
D3328	TR-113033	TRB-1 30 m x 0.32 mm x 3.0 μm	Comparison of waterborne petroleum oils
	TR-113035	TRB-1 30 m x 0.53 mm x 3.0 μm	
D3329	TR-141065	TRB-WAX 60 m x 0.53 mm x 1.0 μm	Purity of methyl isobutyl ketonespirits
D3432	TR-111033	TRB-1 30 m x 0.32 mm x 1.0 μm	Toluene diisocyanates in urethane prepolymers
	TR-111535	TRB-1 30 m x 0.53 mm x 1.5 μm	
D3447	TR-115055	TRB-1 50 m x 0.53 mm x 5.0 μm	Purity of trichlorotrifluoroethane (CFC-113)
D3452	TR-111535	TRB-1 30 m x 0.53 mm x 1.5 μm	Identification of rubber
D3457	TR-882162	TR-CN100 60 m x 0.25 mm x 0.2 μm	FAME analysis
D3465	TR-115223	TRB-1 25 m x 0.32 mm x 0.52 μm	Purity of monomeric plasticizers
	TR-111535	TRB-1 30 m x 0.53 mm x 1.5 μm	
D3524	TR-110845	TRB-1 10 m x 0.53 mm x 0.88 μm	Diesel fuel diluent used in diesel engine oil
D3525		10% OV-101 on Chromosorb WAW 80/100	Gasoline diluent in used gasoline engine oils
		10% Dexel 300 on Chromosorb WAW 80/100	
D3534	TR-120252	TRB-5 50 m x 0.25 mm x 0.25 μm	PCBs in water
D3606	TR-510112	TRB-1ms 15 m x 0.25 mm x 0.1 μm	Benzene and toluene in gasoline
	TR-960462	TR-TCEP 60 m x 0.25 mm x 0.4 μm	
D3687	TR-140533	TRB-WAX 30 m x 0.32 mm x 0.5 μm	Volatile organic compounds
	TR-141035	TRB-WAX 30 m x 0.53 mm x 1.0 μm	
D3710	TR-1150J5	TRB-1 7.5 m x 0.53 mm x 5.0 μm	Boiling range distribution of gasoline and gasoline fractions
D3725	TR-151035	TRB-FFAP 30 m x 0.53 mm x 1.0 μm	Fatty acids in drying oils
D3760	TR-140263	TRB-WAX 60m x 0.32 mm x 0.25 μm	Analysis of isopropylbenzene (cumene)
	TR-110563	TRB-1 60m x 0.32 mm x 0.5 μm	



Cross Reference (타사 호환)

보다 경제적인 금액으로 더욱 향상된 분석이 가능합니다.

TEKNOKROMA	PHASE COMPOSITION	AGILENT	SUPELCO	RESTEK	AGILENT	SGE	ALLTECH	QUADREX	PHENOMENEX	MACHEREY-NAGEL	USP CODE
SAPIENS-1MS	100% dimethyl polysiloxane	DB1-MS UI, HP-1 MS UI, VF-1MS	Equity-1	Rxi-1MS	VF-1MS	SOL-GEL-1MS, BPX-1			ZB-1MS	OPTIMA-1MS Accent	
SAPIENS-5MS	95% dimethyl-5% diphenylpolysiloxane	HP-5 MS UI	Equity-5	Rxi-5MS		BP-5			ZB-5MSi	OPTIMA-5MS	
SAPIENS-X5MS	polysiloxane containing p-silphenylene	DB-5MS UI, VF-5MS	SLB-5MS	Rxi-5Sil MS		BPX-5, BP-5MS			ZB-5MS	OPTIMA-5MS Accent	
SAPIENS-WAX.MS	100% polyethylene glycol	VF-WAXMS	SupelcoWAX 10	STABILWAX MS	VF-WAXMS	SolGel-WAX			ZB-WAX	Optima-WAX	G14, G15, G16, G20, G39
SAPIENS-WAX.HT	polyethylene glycol										
TRB-1	100% dimethyl polysiloxane	HP-1, HP101, Ultra-1, DB-1	SPB-1, Equity-1	Rtx-1	CP-Sil 5 CB	BP-1	AT-1	007-1	ZB-1	Optima-1	G1, G2, G38
TRB-1HT		DB-1HT		Stx-1HT			AT-1 HT		ZB-1HT		
TRB-1HT SimDist		DB-1HT SimDist		MXT-1 SimDist	CP-SimDist						
TRB-1MS		HP-1MS, DB-1MS	EQUITY-1	Rxi-1MS, Rtx-1MS	VF-1MS, CP-Sil 5 CB MS		AT-1 MS		ZB-1MS	Optima-1MS	
TRB-SULFUR			SPB-1Sulfur		CP-Select CB for CP-Select CB for						
TRB-2887		DB-2887	Petrocol-2887	Rtx-2887							
TRB.50.2PONA		HP-PONA	Petrocol DH 50.2	Rtx-1 PONA	CP-SIL PONA CB	BP-1 PONA					
TRB-PETROL		DB-PETRO	Petrocol DH	Rtx-1 PONA							
TRB-PETRO.150			Petrocol DH 150								
TRB-5	polysiloxane	HP-5, Ultra-2, DB-5	SPB-5, Equity-5	Rtx-5	CP-SIL 8 CB	BP-5	AT-5	007-2	ZB-5	Optima-5	G27, G36
TRB-5HT		DB-5HT							ZB-5HT		
TRB-5MS		HP-5MS, PAS-5	Equity-5	Rtx-5 MS, Rxi-5MS	VF-5MS, CP-Sil 8 CB MS				ZB-5MS	Optima-5MS	
TRB-STEROL			SAC-5								
TRB-5 AMINE			PTA-5	Rtx-5Amine	CP-Sil 8 CB MS					Optima-5 Amine	
TRB-5.625	polysiloxane	DB-5.625	PTE-5								
TRB-G27			G27	Rtx-G27							
MTI-5		HP-5MSi	PTE-5	Rxi-5MS							
Meta.X5	95% dimethyl-5% polysilphenylene	HP-5TA, DB-5MS	MDN-5, SLB-5MS	Rxi-5Sil MS	CP-Sil 8 CB Low Bleed/MS VF-5MS	BPX-5	AT-5MS	007-5 MS	ZB-5MS	Optima-5 Accent	
Meta.XLB	Proprietary bonded phase	DB-XLB	MDN 12		VF-XMS				ZB-XLB	OPTIMA XLB	
Meta.WAX 400	100% polyethylene glycol				CP-Carbowax 400						
Meta.X5 TRIAZINE	proprietary bonded phase										
Meta.VOC	proprietary bonded phase	DB-502.2, HP-VOC	VOCOL	Rtx-502.2							
TRB-1301, TRB-624, TRB-G43	6% cyanopropylphenyl-94% dimethyl polysiloxane	HP-1301, HP-624 DB-1301, DB-624	SPB-1301, OVI-43	Rtx-1301, Rtx-624	CP-Select 624 CB	BPX-624	AT-624		ZB-624	Optima-1301	G43
TRB-14	14% diphenyl-86% dimethyl polysiloxane				CP-Sil 13 CB						
TRB-20	20% diphenyl-80% dimethyl polysiloxane		SPB-20, VOCOL	Rtx-20			AT-20	007-7			G28, G32
TRB-35	35% diphenyl-65% dimethyl polysiloxane	HP-35, DB-35	SPB-35	Rtx-35		BPX-35, BPX-608	AT-35	007-11	ZB-35		G42
TRB-1701	14% cyanopropylphenyl-86% dimethyl polysiloxane	HP-1701, PAS-1701 DB-1701	SPB-1701	Rtx-1701	CP-Sil 19 CB	BP-10	AT-1701	007-1701	ZB-1701	Optima-1701	G46
TRB-225	50% cyanopropylphenyl-50% dimethyl polysiloxane	HP-225, DB-225		Rtx-225	CP-Sil 43 CB	BP-225	AT-225	007-225		Optima-225	G7, G19
TRB-PAG	50% polyethylene-50% poly propylenglycol		PAG								
TRB-FFAP	treated polyethylene glycol for acidic compounds	HP-FFAP, DB-FFAP	Nukol, SP-1000	StabilWAX-DA	CP-WAX 58 CB	BP-21	AT-1000, FFAP	007-FFAP		PermaBond FFAP	G25, G35
TRB-50	50% diphenyl-50% dimethyl polysiloxane	HP-50+, DB-17, DB-608	SPB-50, SPB-2250	Rtx-50, Rxi-17	CP-Sil 24 CB		AT-50	007-17	ZB-50	Optima-17	G3
TRB-50HT	50% diphenyl-50% dimethyl polysiloxane	DB17HT		Rtx-65	TAB-CB			007-65HT			G17
TRB-F50	50% trifluoropropylmethyl polysiloxane	DB-210, DB-200		Rtx-200			AT-210	007-210		Optima-210	G6
TRB-WAX	100% polyethylene glycol	HP-20M, HP-innoWAX DB-WAX, DB-WAXetr	SupelcoWAX-10, CarboWAX 20M	StabilWAX	CP-WAX 52 CB	BP-20	AT-WAX	007-CW	ZB-WAX	PermaBond CW 20M	G14, G15, G16
SupraWAX-280	100% polyethylene glycol		SupelcoWAX-10								
TR-WAX.DB	treated polyethylene glycol for basic compounds	CAM, HP-BasicWAX	CarboWAX-Amine	StabilWAX-DB	CP-WAX 51 CB						
Meta.WAX	100% polyethylene glycol	HP-WAX, DB-WAX			CP-WAX 57 CB						
TRB-WAX.Omega	100% polyethylene glycol		OmegaWAX	FameWAX							
TR-CN100	100% biscyanopropyl polysiloxane			Rt-2340	CP-Sil 88	BPX-70, BPX-90					G48
TR-CRESOL	not bonded phase				CP-Cresol						
TRB-17	50% diphenyl-50% dimethyl polysiloxane	HP-17									G3
Meta.VOC	bonded phase	DB-502.2, HP-VOC	Vocol	Rtx-502.2							
Meta.BLOOD 1	bonded phase	DB-ALC1		Rtx-BAC1							
Meta.BLOOD 2	proprietary bonded phase	DB-ALC2		Rtx-BAC2							
TRB-608	proprietary bonded phase	HP-608	SPB-608			BP-608					
TR-TCEP	1, 2, 3-tris(cyanoethoxy) propane		TCEP	Rt-TCEP	CP-TCEP						
MetAmine-VOL				Rtx-Volatile Amine	CP-Volamine						
TRB-BIODIESEL	proprietary bonded phase	DB-5HT		Rtx-Biodiesel	Select Biodiesel			400-5HT	ZB-5HT		

Standard HPLC Columns



- 최고의 가성비를 지닌 제품
- 고순도 실리카 팩킹 기술
- C18, C18-MS 공급
- 넓은 pH 사용 범위 (pH2 ~ pH11)
- 뛰어난 분석 재현성 및 높은 내구성
- Method Development 최적화 컬럼

LC-MS Columns Brisa LC² C18-MS 3 µm

Packing	Funct.	µm	Length cm	Diameter cm	Cat.Nbr.
Brisa LC²	C18-MS	3	5	0.21	TR-010496
Brisa LC²	C18-MS	3	10	0.21	TR-010497

Analytical Columns Brisa LC² 3 & 5 µm

Packing	Funct.	µm	Length cm	Diameter cm	Cat.Nbr.
Brisa LC²	C18	5	15	0.46	TR-010480
Brisa LC²	C18	5	25	0.46	TR-010481
Brisa LC²	C18	5	15	0.46	TR-010498
Brisa LC²	C18	5	10	0.46	TR-010499

Premium HPLC Columns



- 프리미엄 HPLC컬럼
- 초고순도 실리카 팩킹 기술
- 완벽한 Endcapping 기술 적용
- 균일한 Porosity (SEA-Surface Enhanced Accessibility)를 통한 향상된 분석능
- 넓은 pH범위(pH 1 ~ 12)를 통한 강 산, 염기 응용에 적합

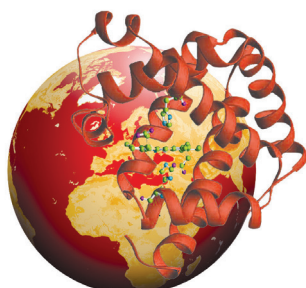
mediterranea™ sea₁₈ 5 µm

Funct.	µm	Length cm	Diameter cm	Cat.Nbr.
mediterranea Sea18	5	3	0.46	TR-010000
mediterranea Sea18	5	4	0.46	TR-010001
mediterranea Sea18	5	5	0.46	TR-010002
mediterranea Sea18	5	10	0.46	TR-010003
mediterranea Sea18	5	15	0.46	TR-010004
mediterranea Sea18	5	20	0.46	TR-010005
mediterranea Sea18	5	25	0.46	TR-010006
mediterranea Sea8	5	3	0.46	TR-010355
mediterranea Sea8	5	4	0.46	TR-010356
mediterranea Sea8	5	5	0.46	TR-010357
mediterranea Sea8	5	10	0.46	TR-010358
mediterranea Sea8	5	15	0.46	TR-010359
mediterranea Sea8	5	20	0.46	TR-010360
mediterranea Sea8	5	25	0.46	TR-010361
mediterranea Sea4	5	3	0.46	TR-010362
mediterranea Sea4	5	4	0.46	TR-010363
mediterranea Sea4	5	5	0.46	TR-010364
mediterranea Sea4	5	10	0.46	TR-010365
mediterranea Sea4	5	15	0.46	TR-010366
mediterranea Sea4	5	20	0.46	TR-010367
mediterranea Sea4	5	25	0.46	TR-010368

mediterranea™ sea₁₈ 3 µm

Funct.	µm	Length cm	Diameter cm	Cat.Nbr.
mediterranea Sea18	3	3	0.46	TR-010039
mediterranea Sea18	3	4	0.46	TR-010040
mediterranea Sea18	3	5	0.46	TR-010041
mediterranea Sea18	3	10	0.46	TR-010042
mediterranea Sea18	3	15	0.46	TR-010043
mediterranea Sea18	3	20	0.46	TR-010044
mediterranea Sea18	3	25	0.46	TR-010045
mediterranea Sea8	3	3	0.46	TR-010431
mediterranea Sea8	3	4	0.46	TR-010432
mediterranea Sea8	3	5	0.46	TR-010433
mediterranea Sea8	3	10	0.46	TR-010434
mediterranea Sea8	3	15	0.46	TR-010435
mediterranea Sea8	3	20	0.46	TR-010436
mediterranea Sea8	3	25	0.46	TR-010437
mediterranea Sea4	3	3	0.46	TR-010438
mediterranea Sea4	3	4	0.46	TR-010439
mediterranea Sea4	3	5	0.46	TR-010440
mediterranea Sea4	3	10	0.46	TR-010441
mediterranea Sea4	3	15	0.46	TR-010442
mediterranea Sea4	3	20	0.46	TR-010443
mediterranea Sea4	3	25	0.46	TR-010444

Peptides, Protein Analysis HPLC columns



- 단백질, 펩타이드 등 Biomolecules 분석
- 완벽한 Endcapping 기술 적용
- 분자량에 따른 Porous Size 120 Å & 300 Å 선택
- 넓은 pH범위 강 산, 강 염기에도 안정 (pH1 ~ 12)
- 다양한 고정상 C4, C8, C18 제공

Europa Peptide 120 Packing

Funct.	µm	cm	cm	Cat.Nbr.
C18	5	3	0.46	TR-010116
C18	5	4	0.46	TR-010117
C18	5	5	0.46	TR-010118
C18	5	10	0.46	TR-010119
C18	5	15	0.46	TR-010120
C18	5	20	0.46	TR-010121
C18	5	25	0.46	TR-010122
C18	5	3	0.4	TR-010123
C18	5	4	0.4	TR-010124
C18	5	5	0.4	TR-010125
C18	5	10	0.4	TR-010126
C18	5	15	0.4	TR-010127
C18	5	20	0.4	TR-010128
C18	5	25	0.4	TR-010129

Europa Protein 300 Packing

Funct.	µm	cm	cm	Cat.Nbr.
C18	5	3	0.46	TR-010158
C18	5	4	0.46	TR-010159
C18	5	5	0.46	TR-010160
C18	5	10	0.46	TR-010161
C18	5	15	0.46	TR-010162
C18	5	20	0.46	TR-010163
C18	5	25	0.46	TR-010164
C18	5	3	0.4	TR-010172
C18	5	4	0.4	TR-010173
C18	5	5	0.4	TR-010174
C18	5	10	0.4	TR-010175
C18	5	15	0.4	TR-010176
C18	5	20	0.4	TR-010177
C18	5	25	0.4	TR-010178

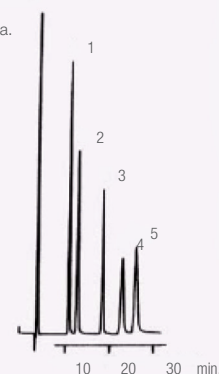
Tracer Carbohydrates

- 당 류 분석 특화 컬럼 (Fructose, Glucose, Sucrose, Maltose, Lactose,..)
- 넓은 pH범위 (pH1 ~ 12)
- 뛰어난 단당류 분리능



Reference µm	Description cm	Particle Size	Dimensions
TR-016804	Tracer Carbohydrates	5 µm	15 x 0.46 cm
TR-016805	Tracer Carbohydrates	5 µm	25 x 0.46 cm

Columna: **Tracer Carbohidratos**,
4.6 x 250 mm.
Eluyente: 75/25 acetonitrilo/agua.
Flujo: 1.0 ml/min.
Temperatura: Ambient.
Detector: RI
1. Fructose
2. Glucose
3. Sucrose
4. Maltose
5. Lactose



시료 전처리 소모품 (SPE 카트리지)

- 기기 분석을 위한 시료 전처리용 SPE 카트리지
- 불순물 제거를 통한 시료의 순도 향상 : 장비 및 소모품 수명 연장 및 분석능 향상
- 특화된 Filling PRIM™ 팩킹 기술로 개별 제품의 모니터링 가능
- Pore Size 60 Å의 균일한 실리카 사용으로 최상의 분리 성능 제공

주요 SPE 제품 주문 정보

Finisterre™ FLO SPE Columns



Retention Mechanism: Normal phase
Functional Group: Florisil® (FLO)
Base: Magnesium Silicate
Average Particle Size: 75-100 µm
Pore Diameter: 85 Å
Hardware: Polypropylene
Frit: Polypropylene 20 µm porosity

Cat.No	Description	pk
TR-F034120	Finisterre Si SPE Column 100 mg/1 mL	100
TR-F034122	Finisterre Si SPE Column 200 mg/3 mL	50
TR-F034124	Finisterre Si SPE Column 500 mg/3 mL	50
TR-F034126	Finisterre Si SPE Column 500 mg/6 mL	30
TR-F034128	Finisterre Si SPE Column 1000 mg/6 mL	30
TR-F034130	Finisterre Si SPE Column 1000 mg/12 mL	20

Finisterre™ NH₂ SPE Columns



Retention Mechanism: Weak anion exchange with aqueous matrix, normal phase with non-polar organic matrix.
Functional Group: Aminopropyl (NH₂)
Endcapped: no
Higher Carbon Load: 5.0 %
Silica Base: Irregular Shape
Average Particle Size: 50 µm
Pore Diameter: 60 Å
Hardware: Polypropylene
Frit: Polypropylene 20 µm porosity

Cat.No	Description	pk
TR-F034140	Finisterre SPE Columns NH ₂ 100 mg/1 mL	100
TR-F034142	Finisterre SPE Columns NH ₂ 200 mg/3 mL	50
TR-F034144	Finisterre SPE Columns NH ₂ 500 mg/3 mL	50
TR-F034146	Finisterre SPE Columns NH ₂ 500 mg/6 mL	30
TR-F034148	Finisterre SPE Columns NH ₂ 1000 mg/6 mL	30
TR-F034150	Finisterre SPE Columns NH ₂ 1000 mg/12 mL	20

Finisterre™ C18 SPE Columns



Retention Mechanism: Reverse phase, one of the most hydrophobic phases
Functional Group: Polymerically bonded octadecyl C18 endcapped. High Capacity C18
Endcapped: yes
Higher Carbon Load: 17.0 %
Silica Base: Irregular Shape
Average Particle Size: 50 µm
Pore Diameter: 60 Å
Hardware: Polypropylene
Frit: Polyethylene 20 µm porosity

Cat.No	Description	pk
TR-F034000	Finisterre SPE Columns C18/17 % 100 mg/1 mL	100
TR-F034002	Finisterre SPE Columns C18/17 % 200 mg/3 mL	50
TR-F034004	Finisterre SPE Columns C18/17 % 500 mg/3 mL	50
TR-F034006	Finisterre SPE Columns C18/17 % 500 mg/6 mL	30
TR-F034008	Finisterre SPE Columns C18/17 % 1000 mg/6 mL	30
TR-F034010	Finisterre SPE Columns C18/17 % 1000 mg/12 mL	20



시료 전처리 소모품 (QuEChERS)

- 식품, 농산물의 잔류 농약 분석을 위한 빠르고, 간편한 전처리
- 300여 종 이상의 잔류 농약을 동시 추출
- Kit 구성으로 수분 흡수 방지
- EN15662, AOAC 2007.01, Mini-multiresidue QuEChERS 등 다양한 QuEChERS Method 충족



주요 QuEChERS 제품 주문 정보

50 mL Centrifuge Tubes for Sample Extraction

P/N	Description	Qty.	Recommended Application
TR-Q5010	4 g MgSO ₄ , 1 g NaCl, 1 g trisodium citrate dihydrate, 0.5 g disodium hydrogencitrate sesquihydrate	50	European EN-15662
TR-Q5040	6 g MgSO ₄ , 1.5 g NaOAc	50	AOAC 2007.01
TR-Q5020	4 g MgSO ₄ , 1 g NaCl	50	Mini-Multiresidue (10 g sample)
TR-Q5045	6 g MgSO ₄ , 1.5 g NaCl	50	Mini-Multiresidue (15 g sample)
TR-Q5030	6 g MgSO ₄ , 1.5 g NaCl, 1.5 g sodium citrate dibasic, 750 mg disodium citrate dibasic sesquihydrate	50	
TR-Q5050	6 g MgSO ₄ , 1.5 g NaOAc, 750 mg disodium citrate sesquihydrate	50	
TR-Q5000	Empty 50 mL tube	50	

2 mL Micro-Centrifuge Tubes

P/N	Description	Qty.	Aliquot (mL)	Recommended Application
TR-Q2015	150 mg MgSO ₄ , 25 mg PSA	100	1	European EN-15662 Mini-Multiresidue
TR-Q2025	150 mg MgSO ₄ , 25 mg PSA, 25 mg C18	100	1	European EN-15662 Mini-Multiresidue
TR-Q2035	150 mg MgSO ₄ , 25 mg PSA, 2.5 mg GCB	100	1	European EN-15662 Mini-Multiresidue
TR-Q2045	150 mg MgSO ₄ , 25 mg PSA, 7.5 mg GCB	100	1	European EN-15662 Mini-Multiresidue
TR-Q2055	150 mg MgSO ₄ , 50 mg PSA	100	1	AOAC 2007.01
TR-Q2065	150 mg MgSO ₄ , 50 mg PSA, 50 mg C18	100	1	AOAC 2007.01
TR-Q2075	150 mg MgSO ₄ , 50 mg PSA, 50 mg GCB	100	1	AOAC 2007.01
TR-Q2085	150 mg MgSO ₄ , 50 mg PSA, 50 mg C18, 50 mg GCB	100	1	AOAC 2007.01
TR-Q2090	150 mg MgSO ₄ , 25 mg C18	100	1	AOAC 2007.01
TR-Q2000	Empty 2 mL Centrifuge Tube	100	1	

15 mL Centrifuge Tubes

P/N	Description	Qty.	Aliquot (mL)	Recommended Application
TR-Q1590	900 mg MgSO ₄ 150 mg PSA	50	6	European EN-15662
TR-Q1593	900 mg MgSO ₄ 150 mg PSA 150 mg C18	50	6	European EN-15662
TR-Q1591	900 mg MgSO ₄ 150 mg PSA 15 mg GCB	50	6	European EN-15662
TR-Q1592	900 mg MgSO ₄ 150 mg PSA 45 mg GCB	50	6	European EN-15662
TR-Q1510	1200 mg MgSO ₄ 400 mg PSA	50	8	AOAC 2007.01
TR-Q1515	1200 mg MgSO ₄ 400 mg PSA 400 mg C18	50	8	AOAC 2007.01
TR-Q1516	1200 mg MgSO ₄ 400 mg PSA 400 mg GCB	50	8	AOAC 2007.01
TR-Q1520	1200 mg MgSO ₄ 400 mg PSA 400 mg C18	50	8	AOAC 2007.01
TR-Q1596	900 mg MgSO ₄ 150 mg C18	50	6	AOAC 2007.01
TR-Q1594	900 mg MgSO ₄ 300 mg PSA 150 mg GCB	50	6	---
TR-Q1595	900 mg MgSO ₄ 300 mg PSA 150 mg C18	50	6	---
TR-Q1600	750 mg MgSO ₄ 250 mg PSA 250 mg C18	50	6	---

Methods					
Types	Qt Pack	EN 15662	AOAC 2007. 1	Mini Multiresidue	Others
General Fruits and Vegetables: Removes polar organic acids, some sugars and lipids					
	100 tubes 2 mL	25 mg PSA 150 mg MgSO ₄ Part No. TR-Q2015	50 mg PSA 150 mg MgSO ₄ Part No. TR-Q2055	25 mg PSA 150 mg MgSO ₄ Part No. TR-Q015	
	50 tubes 15 mL	150 mg PSA 900 mg MgSO ₄ Part No. TR-Q1590	400 mg PSA 1200 mg MgSO ₄ Part No. TR-Q1510		
Fruits and Vegetables with Fats and Waxes: Removes polar organic acids, some sugars, more lipids and sterols					
	100 tubes 2 mL	25 mg PSA 25 mg C18 150 mg MgSO ₄ Part No. TR-Q2025	50 mg PSA 50 mg C18 150 mg MgSO ₄ Part No. TR-Q2065	25 mg PSA 25 mg C18 150 mg MgSO ₄ Part No. TR-2025	
	50 tubes 15 mL	150 mg PSA 150 mg C18 900 mg MgSO ₄ Part No. TR-Q1593	400 mg PSA 400 mg C18 1200 mg MgSO ₄ Part No. TR-Q1515		150 mg PSA 150 mg C18 900 mg MgSO ₄ Part No. TR-Q1593
Pigmented Fruits and Vegetables: Removes polar organic acids, some sugars and lipids, and carotinoides and chlorophyll; not for use with planar pesticides					
	100 tubes 2 mL	25 mg PSA 2.5 mg GCB 150 mg MgSO ₄ Part No. TR-Q2035	50 mg PSA 50 mg GCB 150 mg MgSO ₄ Part No. TR-Q2075	25 mg PSA 2.5 mg GCB 150 mg MgSO ₄ Part No. TR-Q2035	50 mg PSA 50 mg GCB 150 mg MgSO ₄ Part No. TR-Q2075
	50 tubes 15 mL	150 mg PSA 400 mg GCB 900 mg MgSO ₄ Part No. TR-Q1591	400 mg PSA 400 mg C18 1200 mg MgSO ₄ Part No. TR-Q1516		
	50 tubes 15 mL	150 mg PSA 45 mg GCB 900 mg MgSO ₄ Part No. TR-Q1592			300 mg PSA 150 mg GCB 900 mg MgSO ₄ Part No. TR-Q1594
Fruits and Vegetables with Pigments and Fats: Removes polar organic acids, some sugars and lipids, plus carotinoides and chlorophyll; not for use with planar pesticides					
	100 tubes 2 mL		50 mg PSA 50 mg C18 50 mg GCB 150 mg MgSO ₄ Part No. TR-Q2085	25 mg PSA 7.5 mg GCB 150 mg MgSO ₄ Part No. TR-Q2045	
	50 tubes 15 mL		400 mg PSA 400 mg C18 400 mg GCB 1200 mg MgSO ₄ Part No. TR-Q1520		

레보딕스(주) 홈페이지에 방문하시면 더욱 다양한 제품을 만나보실 수 있습니다



www.revodix.co.kr
sales@revodix.co.kr

HEAD OFFICE

(12930) 경기도 하남시 조정대로 150 (덕풍동)
하남지식산업센터 ITECO 334호
| TEL 031-790-1907 | FAX 031-790-1908 |

DEAJEON BRANCH

(34016) 대전광역시 유성구 테크노3로 65 (관평동)
한신에스메카 415호
| TEL 042-824-5167/8 | FAX 042-824-5169 |

