

Better Solution for Lab Consumable

- | HPLC/GC 컬럼 | HPLC 약제사리 | 샘플링백 |
- | 멤브레인필터 | 시린지필터 | 바이알&캡 |
- | 분리, 여과, 농축 시스템 | 클린룸 약제사리 |
- | HPLC밀폐안전시스템 | 피펫, 와이퍼 | 멸균파우치 |

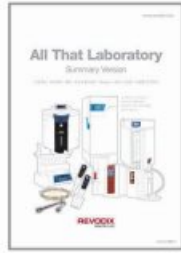


레보딕스(주) 홈페이지에
방문하시면 더욱 다양한
제품을 보실 수 있습니다!

REVODIX
레보딕스(주)

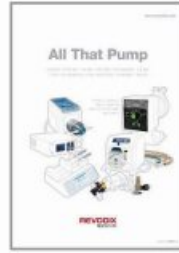
종합카탈로그

Laboratory Product

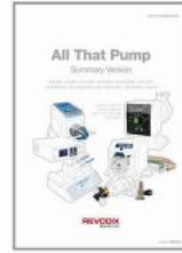


All That Laboratory Summary Version _ 52 page
 기초·분석장비, 챔버, 미생물장비, 초순수제조장치, 실험실 소모품

Liquid Fluidic Product



All That Pump _ 156 page
 튜빙펌프, 기어펌프, 시린지펌프, 피스톤펌프, 다이아프램펌프, OEM펌프



All That Pump Summary Version _ 32 page

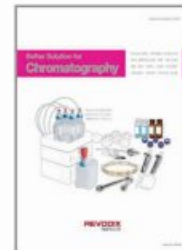
그룹별 카탈로그



Better Solution for Lab Instruments _ 160 page
 건조기, 배양기, 오토클레이브, BSC, 냉장·냉동고, 초저온냉동고, 안전캐비닛, 초순수제조장치, 회화로



Better Solution for Lab Consumable _ 60 page
 샘플링백, 멤브레인필터, 시린지필터, 클린룸 약제사리, 피펫, 와이퍼, HPLC/GC 컬럼, HPLC 밀폐안전시스템



Better Solution for Chromatography _ 192 page
 HPLC/GC컬럼, 시린지필터, 바이알&캡, 피펫, 피팅, 튜빙, 밀폐안전시스템, 전처리장비

메이커 카탈로그



MMM (Germany) _ 4page
 안정성 테스트 챔버



Froilabo (France) _ 4page
 초저온 냉동고 (-45 °C, -86°C)



REVOTRAK (레보덱스(주)) _ 4page
 온습도 중앙 모니터링 시스템



LSS (Italy) _ 6page
 인화성·화학물질 보관 캐비닛



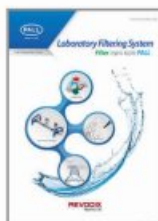
POLYSCIENCE (USA) _ 16page
 항온순환수조, 질러



Fiocchetti (Italy) _ 4page
 실험실 냉동고, 병원용 냉장고



AVIDITY _ 12page
 초순수제조장치



CYTIVA (USA) _ 8page
 시린지 필터, 멤브레인 필터



LABPLAS (Canada) _ 16page
 멸균 샘플백



MN (Germany) _ 240page
 HPLC & GC 컬럼, TLC



SCAT (Germany) _ 172page
 안전 캡, 갈대기, 안전 패액 캡

CONTENTS

CYTIVA™ PALL™



MADE IN USA

Acrodisc

Syringe Filter (Acrodisc) 일반형	06 PAGE
Syringe Filter (Valueprep) 보급형	07 PAGE
Syringe Filter (PSF) 고급형	08 PAGE

Membrane Disc Filter

Membrane filter	09 PAGE
-----------------	---------

Acropak

Capsules filter	10 PAGE
-----------------	---------

Supracap

Depth filter	11 PAGE
--------------	---------

Vacucap

Vacucap filter Solvac	12 PAGE
--------------------------	---------

Centrifugal Devices

Nanosep®	13 PAGE
Microsep® / Macrosep®	14 PAGE
Jumbosep®	15 PAGE

24/96 WELL Vacuum Manifold

AcroPrep 24-well Filter Plate	16 PAGE
-------------------------------	---------

Filter Funnel Manifold

3-Place Manifold	17 PAGE
------------------	---------

Tangential Flow Filtration

Minimate™ TFF System	18 PAGE
----------------------	---------

Rainbow



MADE IN CHINA

Vial & Cap

Screw / Crimp / Snap Vial Crimper & Decapper	20 PAGE
Special Vial & Insert Vial	21 PAGE
Screw / Crimp / Snap Cap Special Cap & Septa	22 PAGE

Filter

Key Features of Syringe Filter	23 PAGE
Syringe Filter	24 PAGE
Membrane Filter	25 PAGE

SCAT



MADE IN GERMANY

Safety Cap

HPLC Solvent Supply	26 PAGE
HPLC Solvent Waste	27 PAGE
HPLC Solvent Waste (LISA)	28 PAGE
Safety Funnels	29 PAGE

SymLine

SymLine Component overview	31 PAGE
----------------------------	---------



샘플 제공
별도 문의

VWR



Pipette

Single Pipette	32 PAGE	Multi Pipette (Basic)	34 PAGE
Electronic Single Pipette	33 PAGE	Multi Pipette (Electronic)	
		Solvent Dispenser / Pipette-aid	35 PAGE

MN column



MADE IN GERMANY

HPLC / GC Column

HPLC / GC Column	36 PAGE
USP listing of HPLC phases	37 PAGE
USP listing of HPLC phases	38 PAGE
USP listing of GC phases	39 PAGE
Summary of TLC	40 PAGE

CHROMABOND

CHROMABOND QuEChERS	41 PAGE
CHROMABOND SPE	43 PAGE

Berkshire



Cleanroom Product

Wiper	44 PAGE
Swab, Cleaning Tool	45 PAGE

LapPlas



MADE IN CANADA

Sampling Bag

Twirl'em	46 PAGE
Large Format	48 PAGE
ECOLO	49 PAGE
BLUE / OPAQUE	50 PAGE
CLEANROOM / KIT	51 PAGE

Ect.

FILTER-BAG	52 PAGE
SANI-SPONGE	53 PAGE
SANI-STICK	54 PAGE
SECURE-T / STRIP	55 PAGE

LABCLEAR



MADE IN USA

Filter

Oxygen Trap / Gas Filter	56 PAGE
Traps	57 PAGE

Glove

58 PAGE

Acrodisc

Syringe Filter (Acrodisc) 일반형



FEATURE

재질	구분	특징
PES (SUPOR)	수용성	빠른 유속에서 처리가능, 단백질 결합이 적어 샘플 유실이 낮음 입자 여과, Buffer, 조직배양액에 적용
PVDF	수용성	화학 저항성이 좋은 재질, 대부분의 HPLC 시료 여과에 적합 및 낮은 단백질 흡착율로 일반적인 생물학 샘플 여과에 적용. Acetone, DMF, DMSO, 6N 이상의 염기에는 적합하지 않음
Nylon	수용성	가장 많이 사용되는 멤브레인, 대부분의 시료에서 탁월한 유속을 보이며, 강산이나 강염기에는 사용 불가, 일반실험 및 대부분의 HPLC 실험에 사용 가능.
PTFE	지용성	거의 모든 용매 사용가능, 크로마토그램 상 Spurious Peaks 방지, 가스 및 유기용매 여과에 적용
wwPTFE	수/지용성	모든 용매와 HPLC & UHPLC 이동상에 사용가능. GHP보다 광범위한 화학적 호환성 및 안정성을 가짐. 높은 Flow rate, 낮은 API binding, 10배 낮은 Extractables 및 컬럼수명 최대 52배까지 연장가능

* HYDROPHILIC POLYETHERSULFONE (PES)

* WATER WETTABLE HYDROPHILIC POLYTETRAFLUOROETHYLENE (wwPTFE): HYDROPHILIC POLYPROPYLENE(GHP) 대체 재질

SPECIFICATION

멸균 제품

재질	P/N	Dia(mm)	Pore Size(um)	Pkg
PES	4611	25	0.1	50/Pkg
	4651	32		
	4602	13	0.2	75/Pkg
	4612	25		
	4652	32		
	4604	13		
	4614	25	0.45	50/Pkg
	4654	32		
	4608	13	0.8	75/Pkg
	4618	25		

비멸균 제품

재질	P/N	Dia(mm)	Pore Size(um)	Pkg
wwPTFE	2400	13	0.2	100/Pkg
	2402		0.45	
	4927	25	0.2	50/Pkg
	4932		0.45	
PVDF	4450	13	0.2	100/Pkg
	4452		0.45	
	4406	25	0.2	50/Pkg
	4408		0.45	
PTFE	4423	13	0.2	100/Pkg
	4422		0.45	
	4225	25	0.2	50/Pkg
	4219		25	
Nylon	4427	13	0.2	100/Pkg
	4426		0.45	
	4436	25	0.2	50/Pkg
	4438		0.45	

2023년 5월부터 Cytiva와 Pall Life Sciences 가 하나의 회사로 합병 되었습니다.

Acrodisc

Syringe Filter (Valueprep) 보급형

FEATURE

- 01 자외선 흡수성이 낮고 고스트 피크 없이 깨끗하고 정확한 분석이 가능
- 02 컬럼 및 계측기를 미립자 축적으로부터 보호하여 컬럼 수명 증가, 계측기 다운타임 감소
- 03 비용절감을 위한 대용량 포장, 소분판매 가능



SPECIFICATION

재질	Pore size	Pore Size(μm)	Dia(mm)	Pkg
wwPTFE	6614567-1	0.2	13	100/Pkg
	6604652-1		25	
	6614563-1	0.45	13	
	6604566-1		25	
PVDF	6054510-1	0.2	13	100/Pkg
	6054520-1		25	
	6054511-1	0.45	13	
	6054500-1		25	
PTFE	6054523-1	0.2	13	100/Pkg
	6054521-1		25	
	6054524-1	0.45	13	
	6054501-1		25	
Nylon	6054540-1	0.2	13	100/Pkg
	6054522-1		25	
	6054541-1	0.45	13	
	6054502-1		25	

Acrodisc

Syringe Filter (PSF) 고급형



FEATURE

- 01 DOUBLE LAYER 프리필터
- 02 돔 형태 디자인으로 더욱 튼튼한 하우징 설계
- 03 여러 겹의 유리섬유 프리필터(GxF)로 일반 유리섬유 프리필터 제품보다 2~4배 많은 양을 처리
- 04 미립자가 포함된 시료의 사전 여과
- 05 필터링이 어려운 시료를 빠르게 여과
- 06 UV/VIS 분광 광도 분석 방해 미립자 제거

SPECIFICATION

재질	P/N	Dia(mm)	Pore Size(um)	Pkg
wwPTFE	AP-4913	25	0.2	50/Pkg
	AP-4915			1000/Pkg
	AP-4919		0.45	50/Pkg
	AP-4921			100/Pkg
PES (SUPOR)	AP-4799	25	0.2	50/Pkg
	AP-4425			50/Pkg
	AP-4426		1000/Pkg	
PTFE	AP-4790	25	0.2	50/Pkg
	AP-4791			1000/Pkg
	AP-4303		0.45	50/Pkg
	AP-4302			1000/Pkg
	AP-4301			25/Pkg
PVDF	AP-4793	25	0.2	50/Pkg
	AP-4794			1000/Pkg
	AP-4310		0.45	50/Pkg
	AP-4306			1000/Pkg
NYLON	AP-4787	25	0.2	50/Pkg
	AP-4788			1000/Pkg
	AP-4549		0.45	50/Pkg
	AP-4528			1000/Pkg
Glass fiber	AP-4527	25	1	25/Pkg

Membrane Disc Filter

Membrane filter

FEATURE

- 01 수용성과 aggressive solution에 적용 가능한 wwPTFE membrane
- 02 산성 용액에 강한 Nylon membrane
- 03 Air monitoring에 적합하며 화학적 저항성에 강한 wwPTFE membrane 재질.
- 04 빠른 유속으로 처리량이 많고 단백질 결합이 적어 샘플 유실이 낮은 PES(SUPOR) 재질



SPECIFICATION

열균 제품

재질	P/N	Dia(mm)	Pore Size(um)	Pkg
wwPTFE	60538	25	0.2	50/Pkg
	60547		0.45	
	60539	47	0.2	
	60548		0.45	
	60542		0.2	
	60550	50	0.45	
	60551	90	0.45	
Nylon	66601	25	0.2	100/Pkg
	66607		0.45	
	66602	47	0.2	

비열균 제품

재질	P/N	Dia(mm)	Pore Size(um)	Pkg
PES (SUPOR)	60300	25	0.2	100 /Pkg
	60172		0.45	
	60110		0.8	
	60301	47	0.2	
	60173		0.45	
	60110		0.8	
	60334	90	0.32	
	60206		0.45	
	60112		0.8	

Acropak

Capsules filter



AcroPak 20
Filters with
Hydrophilic
Sterilizing
Membrane



AcroPak 200
Sterile
Capsules with
Fluorodyne II
& Supor
Membranes



AcroPak 400
and **800** Sterile
Capsules with
Fluorodyne II
Membrane



AcroPak 500,
1000, & 1500
Sterile Capsules
with Supor
Membrane

ORDERING INFORMATION

AcroPak™ 20 Filters with Filling Bell

P/N	Description	Pkg
12201	Fluorodyne II membrane, 0.2 µm, sterile	3/Pkg
12200	Fluorodyne II membrane, 0.2 µm, non-sterile	3/Pkg
12203	Supor membrane, 0.8/0.2 µm, sterile	3/Pkg
12202	Supor membrane, 0.8/0.2 µm, non-sterile	3/Pkg

AcroPak 200 Sterile Capsules with Filling Bell

P/N	Description	Pkg
12069	Fluorodyne II membrane, 0.2 µm	3/Pkg
12941	Supor membrane, 0.8/0.2 µm	3/Pkg

AcroPak 400 Sterile Capsules with Filling Bell

P/N	Description	Pkg
12478	Supor membrane, 0.2 µm	1/Pkg

AcroPak 500 Sterile Capsules with Filling Bell

P/N	Description	Pkg
12991	Supor membrane, 0.8/0.2 µm	1/Pkg
12993	Supor membrane, 0.8/0.45 µm	1/Pkg
12997	Supor membrane, 0.1/0.1 µm	1/Pkg
12995	Supor membrane, 0.2/0.2 µm	1/Pkg

AcroPak 800 Sterile Capsules with Filling Bell

P/N	Description	Pkg
12473	Fluorodyne II membrane, 0.1 µm	1/Pkg
12471	Fluorodyne II membrane, 0.2 µm	1/Pkg

AcroPak 1000 Sterile Capsules with Filling Bell

P/N	Description	Pkg
12992	Supor membrane, 0.8/0.2 µm	1/Pkg
12994	Supor membrane, 0.8/0.45 µm	1/Pkg
12999	Supor membrane, 0.1/0.1 µm	1/Pkg
12996	Supor membrane, 0.2/0.2 µm	1/Pkg

AcroPak 1500 Sterile Capsules without Filling Bell

P/N	Description	Pkg
12675	Supor membrane, 0.8/0.2 µm	1/Pkg
12686	Supor membrane, 0.2/0.2 µm	1/Pkg

Supracap

Depth filter

FEATURE

- 01 재조합 단백질 생산
- 02 세포 배양
- 03 발효액 청정화
- 04 항생제
- 05 백신
- 06 혈장 단백질 및 혈청
- 07 배지



Supracap™ 50 Depth Filter Capsules
(1~3 L 샘플 여과용)

ORDERING INFORMATION

P/N	Description
SC050B010	SUPRAcap™ 50, Bio10 media, 22cm ²
SC050PDE1	SUPRAcap™ 50, HP-series, PDE1 media, 22cm ²
SC050PDE2	SUPRAcap™ 50, HP-series, PDE2 media, 22cm ²
SC050PDH4	SUPRAcap™ 50, HP-series, PDH4 media, 22cm ²

*ALL PART NUMBERS FEATURE FEMALE LUER LOCK INLET / OUTLET CONNECTION

Vacucap

Vacucap filter



Vacuum Filtration Devices
(100 mL ~ 5 L 샘플 여과용)

FEATURE

Sterile filtration

- 01 세포 배양 배지
- 02 미생물 배지
- 03 단백질 용액
- 04 완충액

ORDERING INFORMATION

Pore Size	Level of Filtration
0.45 µm	Clarification
0.2 µm	Sterile Filtration
0.1 µm	Sterile Filtration and Mycoplasma Reduction

VacuCap 60 Devices

P/N	Description	Pkg
4631	0.1 µm, 60 mm, gamma-irradiated	10/Pkg
4632	0.2 µm, 60 mm, gamma-irradiated	10/Pkg
4634	0.45 µm, 60 mm, gamma-irradiated	10/Pkg
TA4632	0.2 µm, 60 mm (supplied with individually attached tubing for each filter device), gamma-irradiated	10/Pkg

VacuCap 60 PF Devices

P/N	Description	Pkg
4638	0.8/0.2 µm, 60 mm, gamma-irradiated	10/Pkg

VacuCap 90 Devices

P/N	Description	Pkg
4621	0.1 µm, 90 mm, gamma-irradiated	10/Pkg
4622	0.2 µm, 90 mm, gamma-irradiated	10/Pkg
4624	0.45 µm, 90 mm, gamma-irradiated	10/Pkg

VacuCap 90 PF Devices

P/N	Description	Pkg
4628	0.8/0.2 µm, 90 mm, gamma-irradiated	10/Pkg

Accessories and Replacement Parts

P/N	Description	Pkg
4623	Feedline accessory kit	1/Pkg

Centrifugal Devices

Nanosep®

FEATURE

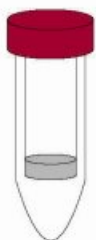
- 01 단백질 혹은 핵산 농도
- 02 탈염
- 03 완충액 교체
- 04 생물학적 샘플의 탈단백질
- 05 단백질 혼합물의 분획
- 06 PCR제품에서의 프라이머 분리
- 07 바이러스 농축 또는 제거
- 08 핵산분리



Nanosep (500 µl 샘플 여과용)

DIFFERENCE WITH COMPETITORS

높은 여과면적, 빠른 Flow rate, 적은 샘플 유실



Device selection by Volume

Model	Sample volume(mL)
Nanosep	< 0.5
Microsep	0.5~5
Macrosep	5~20
Jumbosep	20~60

ORDERING INFORMATION

Nanosep Centrifugal Devices With Omega Membrane

P/N	Description	Pkg
OD003C33	3K, gray	24/Pkg
OD003C34	3K, gray	100/Pkg
OD003C35	3K, gray	500/Pkg
OD010C33	10K, blue	24/Pkg
OD010C34	10K, blue	100/Pkg
OD010C35	10K, blue	500/Pkg
OD030C33	30K, red	24/Pkg
OD030C34	30K, red	100/Pkg
OD030C35	30K, red	500/Pkg
OD100C33	100K, clear	24/Pkg
OD100C34	100K, clear	100/Pkg
OD100C35	100K, clear	500/Pkg
OD300C33	300K, orange	24/Pkg
OD300C34	300K, orange	100/Pkg
OD300C35	300K, orange	500/Pkg

Centrifugal Devices



Microsep® | Macrosep®



Microsep® (5 mL 샘플 여과용)



Macrosep® (20 mL 샘플 여과용)

ORDERING INFORMATION

Microsep Advance Centrifugal Devices with Omega Membrane

P/N	Description	Pkg
MCP001C41	1 K, yellow	24/Pkg
MCP001C46	1 K, yellow	100/Pkg
MCP003C41	3 K, gray	24/Pkg
MCP003C46	3 K, gray	100/Pkg
MCP010C41	10 K, blue	24/Pkg
MCP010C46	10 K, blue	100/Pkg
MCP030C41	30 K, red	24/Pkg
MCP030C46	30 K, red	100/Pkg
MCP100C41	100 K, clear	24/Pkg
MCP100C46	100 K, clear	100/Pkg

Microsep Advance Centrifugal Devices with Supor Membrane

P/N	Description	Pkg
MCPM02C67	0.2 µm, aqua	24/Pkg
MCPM02C68	0.2 µm, aqua	100/Pkg
MCPM45C67	0.45 µm, wildberry	24/Pkg
MCPM45C68	0.45 µm, wildberry	100/Pkg

ORDERING INFORMATION

Macrosep Advance Centrifugal Devices with Omega Membrane

P/N	Description	Pkg
MAP001C36	1 K, yellow	6/Pkg
MAP001C37	1 K, yellow	24/Pkg
MAP001C38	1 K, yellow	100/Pkg
MAO003C36	3 K, gray	6/Pkg
MAO003C37	3 K, gray	24/Pkg
MAP003C38	3 K, gray	100/Pkg
MAP010C36	10 K, blue	6/Pkg
MAP010C37	10 K, blue	24/Pkg
MAP010C38	10 K, blue	100/Pkg
MAP030C36	30 K, red	6/Pkg
MAP030C37	30 K, red	24/Pkg
MAP030C38	30 K, red	100/Pkg
MAP100C36	100 K, clear	6/Pkg
MAP100C37	100 K, clear	24/Pkg
MAP100C38	100 K, clear	100/Pkg

Macrosep Advance Centrifugal Devices with Supor Membrane

P/N	Description	Pkg
MAPM02C67	0.2 µm, aqua	24/Pkg
MCPM02C68	0.2 µm, aqua	100/Pkg
MCPM45C67	0.45 µm, wildberry	24/Pkg
MCPM45C68	0.45 µm, wildberry	100/Pkg

Centrifugal Devices

Jumbosep®

ORDERING INFORMATION

샘플의 농축, 정제 및 여과를 편리하게 만들어 주는 샘플 여과 컵 60 mL를
30분 이내로 5 mL 로 농축 (150배 농축)
회수율 90% 이상

Jumbosep Centrifugal Device Starter Kits

P/N	Description	Pkg
FD000K65	Generic starter kit, (no membrane inserts)	4/Pkg
FD003K65	3 K starter kit, gray	4/Pkg
FD010K65	10 K starter kit, blue	4/Pkg
FD030K65	30 K starter kit, red	4/Pkg
FD100K65	100 K starter kit, clear	4/Pkg
FD300K65	300 K starter kit, orange	4/Pkg



Jumbosep (60 mL 샘플 여과용)

Jumbosep Centrifugal Device Membrane Inserts

P/N	Description	Pkg
OD003C65	3 K membrane insert, gray	12/Pkg
OD010C65	10 K membrane insert, blue	12/Pkg
OD030C65	30 K membrane insert, red	12/Pkg
OD100C65	100 K membrane insert, clear	12/Pkg
OD300C65	300 K membrane insert, orange	12/Pkg

Accessories and Replacement Parts

P/N	Description	Pkg
FD001X65	Filtrate receiver and cap	12/Pkg
FD002X65	Sample reservoir and cap	12/Pkg
FD003X65	Insert release	24/Pkg

24/96 WELL Vacuum Manifold



AcroPrep 24-well Filter Plate



데모 진행가능

FEATURE

- 01 LC 샘플 전처리**
 - 24개 샘플을 한 번에 여과하여 Vial에 보관
 - 실험 소모품 간소화(시린지, 시린지 필터, 피펫 팁 모두 대체)
 - PES, wwPTFE 재질로 수용성 / 지용성 샘플 모두 여과
 - LC분석 장비로 샘플 전처리에 사용
 - 이중층으로 단백질 회수율 90% 이상
- 02 단백질 여과 및 농축**
 - 고성능 Supor(PES) 멤브레인으로 샘플 준비가 용이
 - 최대 7 mL 샘플 여과
 - 단백질과 최소한으로 결합하여 샘플을 농축

ORDERING INFORMATION

Vacuum Manifold and Accessories

P/N	Description	Pkg
5017	Multi-well plate manifold	1/Pkg

AcroPrep 24-Well Filter Plates, 7 mL

P/N	Description	Pkg
97029	7 mL, 0.1 µm, Supor	8/Pkg
97030	7 mL, 0.1 µm, Supor	2/Pkg
97027	7 mL, 0.2 µm, Supor EKV	8/Pkg
97017	7 mL, 0.2 µm, Supor EKV	2/Pkg
97031	7 mL, 0.45 µm, Supor	8/Pkg
97032	7 mL, 0.45 µm, Supor	2/Pkg
97033	7 mL, 0.8 µm, Supor	8/Pkg
97034	7 mL, 0.8 µm, Supor	2/Pkg
97035	7 mL, 1.2 µm, Supor	8/Pkg
97036	7 mL, 1.2 µm, Supor	2/Pkg
97047	7 mL, 5 µm, Supor	8/Pkg
97048	7 mL, 5 µm, Supor	2/Pkg
97061	7 mL, 30-40 µm, PP/PE	8/Pkg
97062	7 mL, 30-40 µm, PP/PE	2/Pkg

Masterflex L/S® Analog Variable-Speed Console Drive

FEATURE

빠른 유속의 액체 이송이 가능한 드레인 펌프



P/N	Description	Pkg
07555-05	20 to 600 rpm; 230 VAC	1/EA
77200-60	20 to 600 rpm; 230 VAC	1/EA
06440-16	Tubing, Tygon® S3™ E-LFL, L/S 16	1/EA

데모시연가능 Filter Funnel Manifold

3-Place Manifold

FEATURE

- 01 316L stainless steel 재질
- 02 모든 PALL Micro Funnel 필터에 사용 가능
- 03 Pall에서만 제공하는 장착이 편리한 마그네틱 Funnel
- 04 다양한 화학물질 호환성
- 05 Valve 분리 가능 (내부 확인이 가능하여 오염여부 확인 용이)
- 06 Autoclave 가능
- 07 최대 3대까지 연결 가능(총 9구)
- 08 진공펌프와 Peristaltic *펌프를 선택하여 사용 가능

* PERISTALTIC PUMP : 여과 플라스크 없이 바로 폐기가능



ORDERING INFORMATION

Filter Funnel Manifold

P/N	Description	Pkg
4889	Laboratory Manifold, 3-Place, with Manifold Valves, End Cap, Hose Barb Cap	1set/Pkg
4890	Adapter for Micro funnel	3/Pkg
4891	Adapter for Sentino funnel	3/Pkg
4959	Elongated Standard Adapter	3/Pkg
4893	Coupling Device for Manifold	1/Pkg

Magnetic Filter Funnel

P/N	Description	Diameter	Pkg
4247	150 mL capacity	7.6cm	1/Pkg
4242-N	300 mL capacity	7.6cm	1/Pkg
4241	300 mL capacity, with lid	7.6cm	1/Pkg
4238	500 mL capacity	9.9cm	1/Pkg

MicroFunnel Filter Funnel

P/N	Description	Pkg
4800	0.45 μm GN-6 Metrical membrane, white, gridded, individually bagged 100mL	50/Pkg
4804	0.45 μm GN-6 Metrical membrane, white, gridded, individually bagged 100mL	200/Pkg
4801	0.45 μm GN-6 Metrical membrane, white, gridded, unbagged 100mL	50/Pkg
4803	0.2 μm Supor membrane, white, gridded, individually bagged 100mL	50/Pkg
4806	0.2 μm Supor membrane, white, no grid, individually bagged 100mL	50/Pkg
4852	0.45 μm Supor membrane, white, gridded, individually bagged 100mL	50/Pkg
4805	0.45 μm Metrical Black membrane, black, gridded, individually bagged 100mL	50/Pkg

MicroFunnel Filter Funnel, 300 mL

P/N	Description	Pkg
4815	0.45 μm GN-6 Metrical membrane, white, gridded, individually bagged	20/Pkg
4818	0.2 μm Supor membrane, white, gridded, individually bagged	20/Pkg
4828	0.45 μm Supor membrane, white, gridded, individually bagged	20/Pkg



데모 진행가능

Tangential Flow Filtration_데모시연가능



Minimate™ TFF System



FEATURE

- 01 Ultrafiltration & Diafiltration 농축, 여과 동시 가능
- 02 샘플 볼륨을 최대 500ml 까지 처리하고 샘플을 5ml 까지 효율적으로 농축. 카세트 4개 장착시 최대 2L까지 농축 가능
- 03 단백질, 항체, 바이러스, 엑소좀 등 농축 및 탈염
- 04 금속에 민감한 효소 또는 분자 처리
- 05 작은 생체 분자와 큰 분자 분리
- 06 Magnetic stirrer로 교반과 농축 작업 동시 가능
- 07 농축 후 다른 장비 없이 Dia filtration(Buffer Exchange)가능
- 08 1 K cassette 구입 가능
- 09 Lab scale의 유일한 장비로 초기 scale up에 필수장비



SPECIFICATION

	Minimate TFF System	Minimate TFF Reservoir Assembly Only*
포함사항	Peristaltic pump, pump head, pressure gauge, valves, reservoir with stir bar, built-in stir plate stir plate on a drip tray	pressure gauge, valves, reservoir with stir bar, built-in stir plate stir plate on a drip tray
치수	30.7 cm W x 48.2 cm D x 20.8 cm H	30.7 cm W x 20.3 cm D x 20.8 cm H
무게	6.0 kg	1.0 kg
최대 압력	4.1 bar (410 kPa, 60 psi)	4.1 bar (410 kPa, 60 psi)
작동 온도 범위	0 - 50 °C	0 - 50 °C
재순환 유량	10 - 240 mL/min	10 - 240 mL/min
최소 시스템 작동 용량	<15mL	<15mL

해당 제품은 EASY-LOAD 펌프 헤드 가 장착된 MASTERFLEX L/S VARIABLE-SPEED 펌프 혹은 이와 동일한 사양의 제품이 필요합니다.

ORDERING INFORMATION

P/N	Description	Pkg
OAPMPUNV	Includes peristaltic pump, pump head, 2 pressure gauges, reservoir, stir plate, drip tray, and assorted fittings	1 Set

Minimate™ TFF Capsule

Effective Filtration Area
50 cm² (0.05 ft²)

ORDERING INFORMATION

Minimate™ TFF Capsules With Omega™ Membrane

P/N	Description	Pkg
OA001C12	1 K	1/Pkg
OA003C12	3 K	1/Pkg
OA005C12	5 K	1/Pkg
OA010C12	10 K	1/Pkg
OA030C12	30 K	1/Pkg
OA050C12	50 K	1/Pkg
OA070C12	70 K	1/Pkg
OA100C12	100 K	1/Pkg
OA300C12	300 K	1/Pkg
OA500C12	500 K	1/Pkg
OA990C12	1000 K	1/Pkg

MINIMATE TFF 캡슐 패키지는 MINIMATE TFF 액세서리 키트가 한 개 포함되어 있습니다.

Tangential Flow Filtration

LV Centramate™ TFF System

ORDERING INFORMATION

Supor® Membrane Centramate Cassettes for LV Centramate
Cassette Holder [0.02 m² (0.2 ft²)]

P/N	Pore Size	Pkg
PSM10C11P2	0.1 μm	1/Pkg
PSM20C11P2	0.2 μm	1/Pkg
PSM65C11P2	0.65 μm	1/Pkg

T-series cassettes with Omega PES membrane

P/N	MWCO	Filtration Area	P/N	MWCO	Filtration Area
OS001T01	1 K	93 cm ²	OS050T01	50 K	93 cm ²
OS001T02	1 K	186 cm ²	OS050T02	50 K	186 cm ²
OS001T06	1 K	0.5 m ²	OS050T06	50 K	0.5 m ²
OS001T12	1 K	0.1 m ²	OS050T12	50 K	0.1 m ²
OS001T26	1 K	2.5 m ²	OS050T26	50 K	2.5 m ²
OS003T01	3 K	93 cm ²	OS070T02	70 K	186 cm ²
OS003T02	3 K	186 cm ²	OS070T06	70 K	0.5 m ²
OS003T06	3 K	0.5 m ²	OS070T12	70 K	0.1 m ²
OS003T12	3 K	0.1 m ²	OS070T26	70 K	2.5 m ²
OS003T26	3 K	2.5 m ²	OS100T01	100 K	93 cm ²
OS005T01	5 K	93 cm ²	OS100T02	100 K	186 cm ²
OS005T02	5 K	186 cm ²	OS100T06	100 K	0.5 m ²
OS005T06	5 K	0.5 m ²	OS100T12	100 K	0.1 m ²
OS005T12	5 K	0.1 m ²	OS100T26	100 K	2.5 m ²
OS005T26	5 K	2.5 m ²	OS300T02	300 K	186 cm ²
OS010T01	10 K	93 cm ²	OS300T06	300 K	0.5 m ²
OS010T02	10 K	186 cm ²	OS300T12	300 K	0.1 m ²
OS010T06	10 K	0.5 m ²	OS300T26	300 K	2.5 m ²
OS010T12	10 K	0.1 m ²			
OS010T26	10 K	2.5 m ²			
OS030T01	30 K	93 cm ²			
OS030T02	30 K	186 cm ²			
OS030T06	30 K	0.5 m ²			
OS030T12	30 K	0.1 m ²			
OS030T26	30 K	2.5 m ²			



LV Centramate™



Cassette Membrane



Centramate™



TFF system
데모 진행가능

Screw · Crimp · Snap Vial



2 mL Screw Vial

2ml Screw Vial

P / N	Description	Qty
SVL020-1C02C	9 mm Screw Vial, 12x32 mm, Clear glass	100/Pkg
SVL020-2C02C	9 mm Screw Vial, 12x32 mm, Clear glass, Write on	100/Pkg
SVL020-3C03C	9 mm Screw Vial, 12x32 mm, Amber glass	100/Pkg
SVL020-4C02C	9 mm Screw Vial, 12x32 mm, Amber glass, Write on	100/Pkg
SVL020-1C01C	8 mm Screw Vial, 12x32 mm, Clear glass	100/Pkg
SVL020-2C01C	8 mm Screw Vial, 12x32 mm, Clear glass, Write on	100/Pkg
SVL020-3C01C	8 mm Screw Vial, 12x32 mm, Amber glass	100/Pkg
SVL020-4C01C	8 mm Screw Vial, 12x32 mm, Amber glass, Write on	100/Pkg



2 mL Crimp Vial

2ml Crimp Vial

P / N	Description	Qty
CVL020-1C01C	11 mm Crimp Vial, 12x32 mm, Clear glass	100/Pkg
CVL020-2C01C	11 mm Crimp Vial, 12x32 mm, Clear glass, Write on	100/Pkg
CVL020-3C01C	11 mm Crimp Vial, 12x32 mm, Amber glass	100/Pkg
CVL020-4C01C	11 mm Crimp Vial, 12x32 mm, Amber glass, Write on	100/Pkg



2 mL Snap Vial

2ml Snap Vial

P / N	Description	Qty
NVL02C0-1A01C	11 mm Snap Vial, 12x32 mm, Clear glass	100/Pkg
NVL02C0-2A02C	11 mm Snap Vial, 12x32 mm, Clear glass, Write on	100/Pkg
NVL02C0-3B01C	11 mm Snap Vial, 12x32 mm, Amber glass	100/Pkg
NVL02C0-4B02C	11 mm Snap Vial, 12x32 mm, Amber glass, Write on	100/Pkg

Crimper & Decapper



Crimper & Decapper

P / N	Description	Qty
ETCCPR-0001	Crimper for 11 mm Aluminum caps	EA
ETCCPR-0003	Crimper for 20 mm Aluminum caps	EA
ETCDPR-0001	Decapper for 11 mm Aluminum caps	EA
ETCDPR-0003	Decapper for 20 mm Aluminum caps	EA

Special Vial & Insert

HeadSpace Vial

P / N	Description	Qty
HSS200-2A02C	20 mL Clear glass Crimp headspace vial, Rounded-Flat Bottom, 20 mm Beveled Edge	100/Pkg
HSS200-2A01C	20 mL Clear glass Crimp headspace vial, Flat Bottom, 20 mm Beveled Edge	100/Pkg
HSS100-2A02C	10 mL Clear glass Crimp headspace vial, Rounded-Flat Bottom, 20 mm Beveled Edge	100/Pkg
HSS100-2A01C	10 mL Clear glass Crimp headspace vial, Flat Bottom, 20 mm Beveled Edge	100/Pkg



Headspace Vial

Storage Vial

P / N	Description	Qty
SVO040-1D01C	4 mL Clear Glass 15x45mm Flat Base 13-425 Screw Thread Vial	100/Pkg
SVO040-3D01C	4 mL Amber Glass Sample Vial 15x45mm 13-425 Screw Thread	100/Pkg
SVAA100-1D01C	10 mL Clear Glass Sample Vial 22x52mm 18-400 Screw Thread	100/Pkg
SVAA100-3D01C	10 mL Amber Glass Sample Vial 22x52mm 18-400 Screw Thread	100/Pkg
SVC200-1D01C	20 mL Clear Glass Sample Vial 27.5x57mm 24-400 Screw Thread	100/Pkg
SVC200-3D01C	20 mL Amber Glass Sample Vial 27.5x57mm 24-400 Screw Thread	100/Pkg
SVE400-1D01C	40 mL Clear Glass Sample Vial 27.5x95mm 24-400 Screw Thread	100/Pkg
SVE400-3D01C	40 mL Amber Glass Sample Vial 27.5x95mm 24-400 Screw Thread	100/Pkg
SVG600-1D01C	60 mL Clear Glass Sample Vial 27.5x140mm 24-400 Screw Thread	100/Pkg
SVG600-3D01C	60 mL Amber Glass Sample Vial 27.5x140mm 24-400 Screw Thread	100/Pkg



Storage Vial

TOC Vial * TOC 10ug/L 이하 Certification 제공 가능

P / N	Description	Qty
TOCV20	20 mL 27.5x57mm Clear Glass TOC Vial, PP Screw Cap with 22mm Natural PTFE/White Silicone 3.0mm thick Septa	100/Pkg
TOCV40	40 mL 27.5x95mm Clear Glass TOC Vial, PP Screw Cap with 22mm Natural PTFE/White Silicone 3.0mm thick Septa	72/Pkg



TOC Vial

Insert vial

P / N	Description	Qty
INF000-7002C	250 uL, 5x31mm Insert Clear Glass Flat Base, USP1 for 8mm Vial	100/Pkg
INF000-7001C	300 uL, 6x31mm Insert Clear Glass Flat Base, USP1 for 9mm Vial	100/Pkg
INI000-7002C	100 uL, 5x29mm Insert Clear Glass Conical Base with Polyspring, USP1 for 8mm Vial	100/Pkg
INI000-7001C	200 uL, 6x29mm Insert Clear Glass Conical Base with Polyspring, USP1 for 9mm Vial	100/Pkg
INC000-7002C	150 uL, 5x31mm Insert Clear Glass Conical Base, USP1 for 8mm Vial	100/Pkg
INC000-7001C	250 uL, 6x31mm Insert Clear Glass Conical Base, USP1 for 9mm Vial	100/Pkg



Inserts

Screw · Crimp · Snap Cap



2 mL Screw Cap

2ml Screw Cap

P / N	Description	Package
SDB040-2103C	9 mm Screw, PP cap, Blue, White silicone/Red PTFE	100/Pkg
SDB040-2201C	9 mm Screw, PP cap, Blue, White silicone/Red PTFE, Pre-slit	100/Pkg
SDA060-3102C	8 mm Screw, PP cap, Blue, White silicone/Red PTFE	100/Pkg



2 mL Crimp Cap

2ml Crimp Cap

P / N	Description	Package
CDC040-1103C	11 mm Crimp, Aluminum cap, Blue, Centre hole, Natural Rubber Redorange/Butyl Red/TEF transparent, 0.040" thick	100/Pkg
CDC040-1101C	11 mm Crimp, Aluminum cap, Green, Centre hole, Natural Rubber Redorange/ Butyl Red/TEF transparent, 0.040" thick	100/Pkg
CDC040-2101C	11 mm Crimp, Aluminum cap, Red, Centre hole, Natural Rubber Redorange/Butyl Red/TEF transparent, 0.040" thick	100/Pkg
CDC040-8101C	11 mm Crimp, Aluminum cap, black, Centre hole, White silicone/Red PTFE, 0.040" thick	100/Pkg



2 mL Snap Cap

2ml Snap Cap

P / N	Description	Package
NDC000-5101C	11 mm Snap, PE cap, transparent, Centre hole, Molded septum	100/Pkg
NDC000-6102C	11 mm snap, PE cap, transparent, Centre hole, White silicone/Red PTFE	100/Pkg
NDC000-5103C	11 mm snap, PE cap, transparent, Centre hole, Red PTFE/White silicone/Red PTFE	100/Pkg
NDC000-5201C	11 mm snap, PE cap, transparent, Centre hole, White silicone/Blue PTFE, Pre-slit	100/Pkg

Special Cap & Septa



Cap

Cap

P / N	Description	Package
SCH000-3301C	13-425 Black Closed Top PP Cap	100/Pkg
SCJ000-3301C	18-400 Black Closed Top PP Cap	100/Pkg
SCK000-3301C	24-400 Black Closed Top PP Cap	100/Pkg
HDF125-1101C	20 mm Open Top Aluminum Crimp Cap (10mm hole) with 20 mm White PTFE/White Silicone Septa 3mm Thick	100/Pkg



Septa

Septa

P / N	Description	Package
SSB040-9301C	9-425 Red PTFE/White Silicone Septa 1 mm Thick	100/Pkg
SSH040-9301C	13-425 Red PTFE/White Silicone Septa 1 mm Thick	100/Pkg
SSJ060-9301C	18-400 Natural PTFE / White Silicone Septa 1.5 mm thick	100/Pkg
SSK060-9301C	24-400 Natural PTFE / White Silicone Septa 1.5 mm thick	100/Pkg

Key Features of Syringe Filter

Feature

- 친수성, 마일드한 유기용매 겸용
- 반도체 산업, 배양 배지, 약, 음료, 고순도 화학 물질 일반적으로 사용
- Color로 재질, Pore size 구별 가능

Diameter

13 mm / 25 mm

Pore size

0.22 um / 0.45 um

Color



Nylon Syringe Filter



Feature

- Hydrophobic (소수성) - 유기용매 전용, 액체 및 기체 여과 모두에 적합
- Hydrophilic (친수성) - 양쪽성(친수성, 유기용매) 사용 적합

Diameter

13 mm / 25 mm

Pore size

0.22 um / 0.45 um

Color



PTFE Syringe Filter



Feature

- Hydrophobic (소수성) - 마일드한 유기용매 겸용
- Hydrophilic (친수성) - 친수성/마일드한 유기용매 겸용

Diameter

13 mm / 25 mm

Pore size

0.22 um / 0.45 um

Color



PVDF Syringe Filter



Syringe Filter



Feature

Rainbow 실린지 필터: 용접 처리되어 제품이 쉽게 파손되지 않음,
샘플의 보존과 회수가 용이

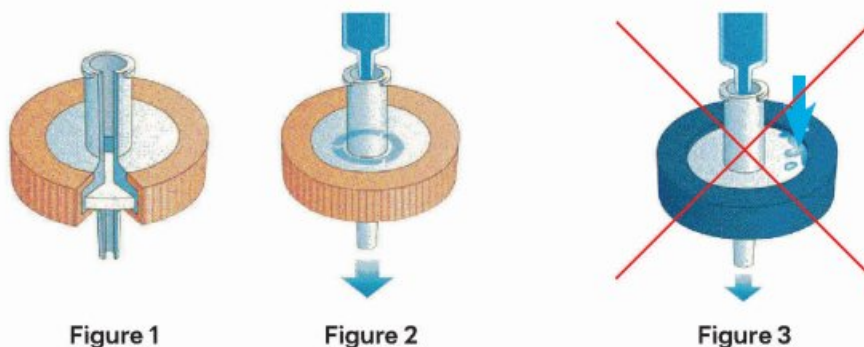


Figure 1

Figure 2

Figure 3

Figure 1,2 | Rainbow welded Syringe Filter
Membrane 과 하우징이 완벽하게 용접되어 제작

Figure 3 | welded되지 않은 타사 Syringe Filter
Leak 발생

ORDERING INFORMATION

Type	P/N	Diameter	Pore Size	Qty	
Nylon	SNY1322	13 mm	0.22 μm	100/Pkg	
	SNY1345		0.45 μm	100/Pkg	
	SNY2545	25 mm	0.22 μm	100/Pkg	
	SNY2522		0.45 μm	100/Pkg	
PTFE	SPT1322L	13 mm	0.22 μm	100/Pkg	
	SPT1345L		0.45 μm	100/Pkg	
	SPT2545L		25 mm	0.22 μm	100/Pkg
	SPT2522L			0.45 μm	100/Pkg
	Hydrophobic	SPT1322B	13 mm	0.22 μm	100/Pkg
		SPT1345B		0.45 μm	100/Pkg
		SPT2522B	25 mm	0.22 μm	100/Pkg
		SPT2545B		0.45 μm	100/Pkg
PVDF	SPV1322L	13 mm	0.22 μm	100/Pkg	
	SPV1345L		0.45 μm	100/Pkg	
	SPV2522L		25 mm	0.22 μm	100/Pkg
	SPV2545L			0.45 μm	100/Pkg
	Hydrophobic	SPV1322B	13 mm	0.22 μm	100/Pkg
		SPV1345B		0.45 μm	100/Pkg
		SPV2522B	25 mm	0.22 μm	100/Pkg
		SPV2545B		0.45 μm	100/Pkg

Membrane Filter

Feature

- 고품질 멤브레인 필터 (유량, 유속 테스트 완료)
- Cleanroom 에서 제작 및 포장
- 막 고정용 핀셋 포함
- 멤브레인 사이에 정전기 방지용 종이 삽입

Diameter
25mm/47mm

Pore size
0.22 μ m / 0.45 μ m

Type

Nylon, MCE, PES, PTFE, PVDF



Nylon 멤브레인 필터

ORDERING INFORMATION

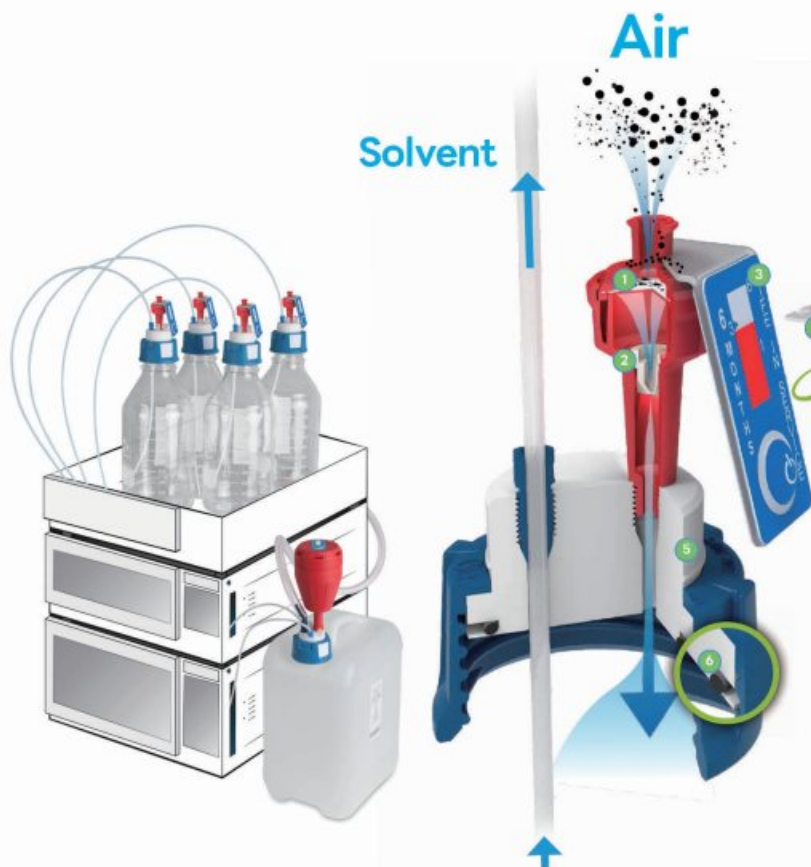
Type	P/N	Diameter	Pore Size	Qty	
Nylon	MNY4745L	47 mm	0.45 μ m	100/Pkg	
	MNY4722L		0.22 μ m	100/Pkg	
	MNY2545L	25 mm	0.45 μ m	200/Pkg	
	MNY2522L		0.22 μ m	200/Pkg	
MCE	MMC4745L	47 mm	0.45 μ m	100/Pkg	
	MMC4722L		0.22 μ m	100/Pkg	
	MMC2545L	25 mm	0.45 μ m	200/Pkg	
	MMC2522L		0.22 μ m	200/Pkg	
PES	MPE4745L	47 mm	0.45 μ m	100/Pkg	
	MPE4722L		0.22 μ m	100/Pkg	
PTFE	Hydrophilic	47 mm	MPT4745L	0.45 μ m	50/Pkg
			MPT4722L	0.22 μ m	50/Pkg
		25 mm	MPT2545L	0.45 μ m	100/Pkg
			MPT2522L	0.22 μ m	100/Pkg
	Hydrophobic	47 mm	MPT4745B	0.45 μ m	50/Pkg
			MPT4722B	0.22 μ m	50/Pkg
		25 mm	MPT2545B	0.45 μ m	100/Pkg
			MPT2522B	0.22 μ m	100/Pkg
PVDF	Hydrophilic	47 mm	MPV4745L	0.45 μ m	50/Pkg
			MPV4722L	0.22 μ m	50/Pkg
	Hydrophobic	47 mm	MPV4745B	0.45 μ m	50/Pkg
			MPV4722B	0.22 μ m	50/Pkg
		25 mm	MPV2545B	0.45 μ m	100/Pkg
			MPV2522B	0.22 μ m	100/Pkg

Safety Cap

HPLC Solvent Supply



MADE IN GERMANY



- 1 PTFE FILTER**
 외부 유해물질이 용매병에 유입되는 것을 방지
- 2 VALVE MEMBRANE**
 용매에서 발생하는 유해증기를 필터링, 용매병의 압력을 일정하게 유지
- 3 EXCHANGE INDICATOR**
 Indicator의 버튼을 눌러주면 사용 주기를 자동으로 계산
- 4 LABELLING FIELD**
 교체일을 기록할 수 있는 라벨이 부착되어 있음
- 5 PTFE-BODY**
 FDA 인증을 받은 PTFE 재질 사용, 360° 회전가능하여 튜빙 고정 방지
- 6 PTFE BODY WITH INTEGRATED FKM SEAL**
 FKM 실링 처리로 필터를 단단하게 고정
- 7 ERGONOMIC DESIGN**
 간편 설치 및 교체, 높은 안전성과 그림감

ORDERING INFORMATION



P/N	Description	Thread	Material	Capillary Connections	Unit
307 019	Safety Cap I	GL 45	PTFE	1x	1
307 909-PP	Safety Cap I	GL 45	PP	1x	1
307 410	Safety Cap IV	GL 45	PTFE	4x	1
307 410-PP	Safety Cap IV	GL 45	PP	4x	1
307 909	Safety Cap II	GL 45	PTFE	3x	1
307 910	Safety Cap III	GL 45	PTFE	3x	1
307 520	Safety Cap VI	GL 45	PTFE	6x	1
317 010	Air valve for Safety Caps	UNF 1/4" 28G	-	-	1
397 010	Air valves for Safety Caps	UNF 1/4" 28G	-	-	10
160 501	Blind plugs for Safety Caps	UNF 1/4" 28G	PFA	-	10

*Air valve and Fittings for tubing connection are included in delivery.

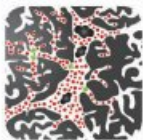
Exhaust Waste Filter

HPLC Solvent Waste

1 PE Filter Membrane

PE소재의 멤브레인필터가 장착되어 공기 순환을 도와줌

2 S.C.A.T. Active Carbon



용매에서 발생하는 유해 증기와 VOC(휘발성 유기화합물)의 필터링에 최적화된 활성탄

3 PE Pre-Filter



PE소재의 멤브레인필터가 장착되어 1차 필터링

4 Fire Protection

Autoclave 가능, UL-94 난연등급 획득

5 Exhaust Filter with FKM Seal



FKM Seal이 장착되어 필터를 단단히 고정하고 용매 증기의 누출을 방지

6 PTFE Body

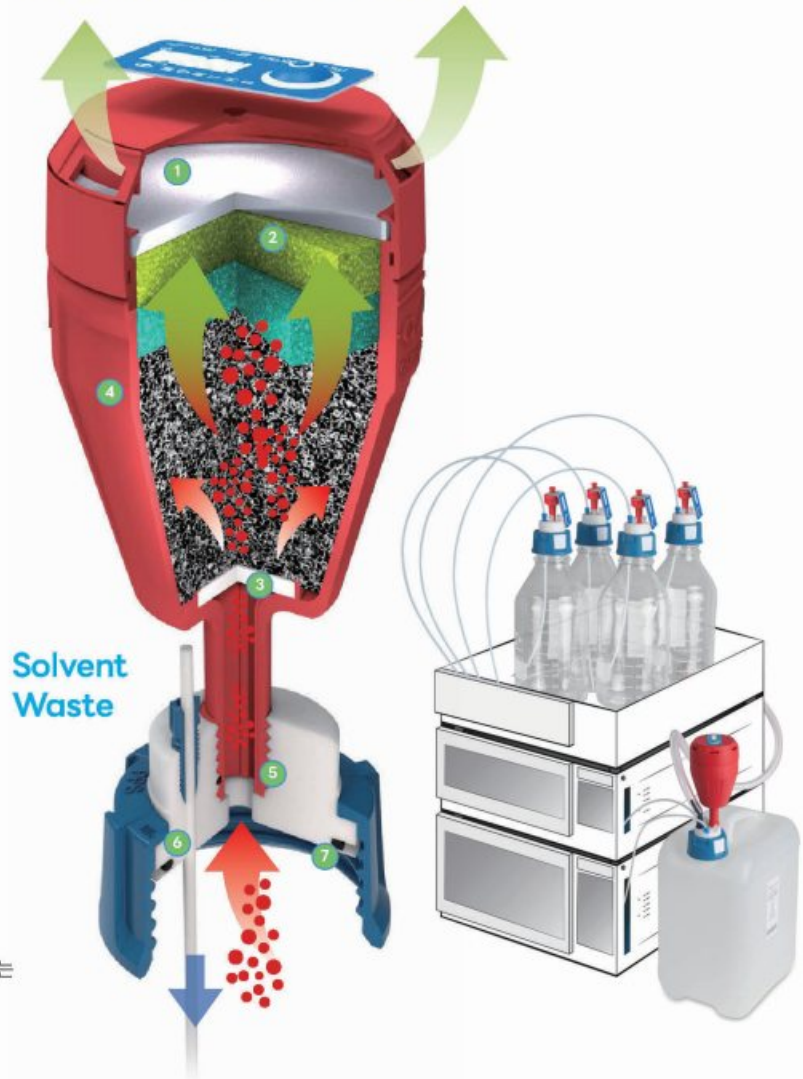
FDA 인증을 받은 PTFE 재질 사용, 360°C 회전가능하여 튜빙 고정 방지

7 PTFE Body with integrated FKM Seal



FKM Seal이 장착되어 용매병 또는 폐액통에 컵이 단단히 고정됨

Filtered Exhaust Air



ORDERING INFORMATION

P/N	Description	Lifetime	Unit
410 534	Exhaust Filter S, V3.0, with splash protection and change indicator	3 months	1
407 982	Exhaust Filter M, V3.0, with splash protection and change label	6 months	1
410 535	Exhaust Filter M, V3.0, with splash protection and change indicator	6 months	1
407 983	Exhaust Filter L, V3.0, with splash protection and change label	12 months	1
407 986	Exhaust Filter L, V3.0, with splash protection and change indicator	12 months	1

12 Months of Safety

P/N	Description	Lifetime	Unit
490 335	Exhaust Filter S, V3.0, with splash protection and change indicator	3 months	4
490 914	Exhaust Filter M, V3.0, with splash protection and change label	6 months	2
490 336	Exhaust Filter M, V3.0, with splash protection and change indicator	6 months	2
490 915	Exhaust Filter L, V3.0, with splash protection and change label	12 months	2
490 986	Exhaust Filter L, V3.0, with splash protection and change indicator	12 months	2

단품으로 구매하는 것보다 최대 20% 저렴합니다. (L사이즈 기준)

Safety Waste Cap

HPLC Solvent Waste (LISA)



Safety Cap V3.0 "Lisa"

- With blind plug M 30 x 35
- GL 45 thread of cap
- 3 tube connections (NPT 1/8")
- 4 HPLC connections (UNF 1/4" 28 G)
- 1 exhaust filter connection (GL 14)



Safety Waste Cap V3.0 "Lisa"

- Made of PTFE-EL
- With blind plugs M 30 x 35
- S 60/61 thread of cap
- 3 tube connectors (NPT 1/8")
- 4 HPLC connections (UNF 1/4" 28 G)
- 1 exhaust filter connection (GL 14)



1 3 Tube Connectors

- Ø5.0 - 11.5 mm OD
- Thread NPT 1/8"
- For tube connections
- Generation 2.0
- PP, blue



2 3 Blind Plugs

- Thread NPT 1/8"
- For tube connections
- PTFE, white



3 4 Fittings

- Ø3.2 mm ID
- Thread UNF 1/4"
- For HPLC connections
- PFA, blue



4 4 Fittings

- Ø2.3 mm ID
- Thread UNF 1/4"
- For HPLC connections
- PFA, violet



5 4 Fittings

- Ø1.6 mm ID
- Thread UNF 1/4"
- For HPLC connections
- PFA, green



6 4 Blind Plugs

- Thread UNF 1/4"
- For HPLC connections
- PFA, colourless



7 1 Blind Plug

- Thread GL 14
- For exchange filter connection
- With FKM sealing ring
- PTFE, white

Safety Funnel

Liquid waste disposal



JAN = LISA with MARCO and Exhaust filter.

JAN은 효과적으로 폐기물을 수집하기 위한 패키지 상품입니다.
안전 폐기물 캡 LISA와 안전 깔때기 MARCO 및 배기 필터가 포함되어 있습니다.



1x



Universal Waste Hub JAN

구성품 소개 (총 25개 구성품)

Universal Waste Hub JAN

- 5 60/61 Thread
- 4 HPLC connections
- 3 Tube connections
- 1 Connection for exhaust filter
- Safety funnel
- Removable sieve
- With lid

Tube connector, stepped, curved

- Ø 5 - 11.5 mm OD
- PP, blue

3x



Blind plug for tube connection

- PTFE, white

3x



Exhaust filter

- Size M
- Lifetime: 6 month

1x



Blind plug for exhaust filter connection

- PTFE, white

1x



Fitting for capillaries

- Ø 1.6 mm ID
- PFA, green

4x



Fitting for capillaries

- Ø 2.3 mm ID
- PFA, violet

4x



Fitting for capillaries

- Ø 3.2 mm ID
- PFA, blue

4x

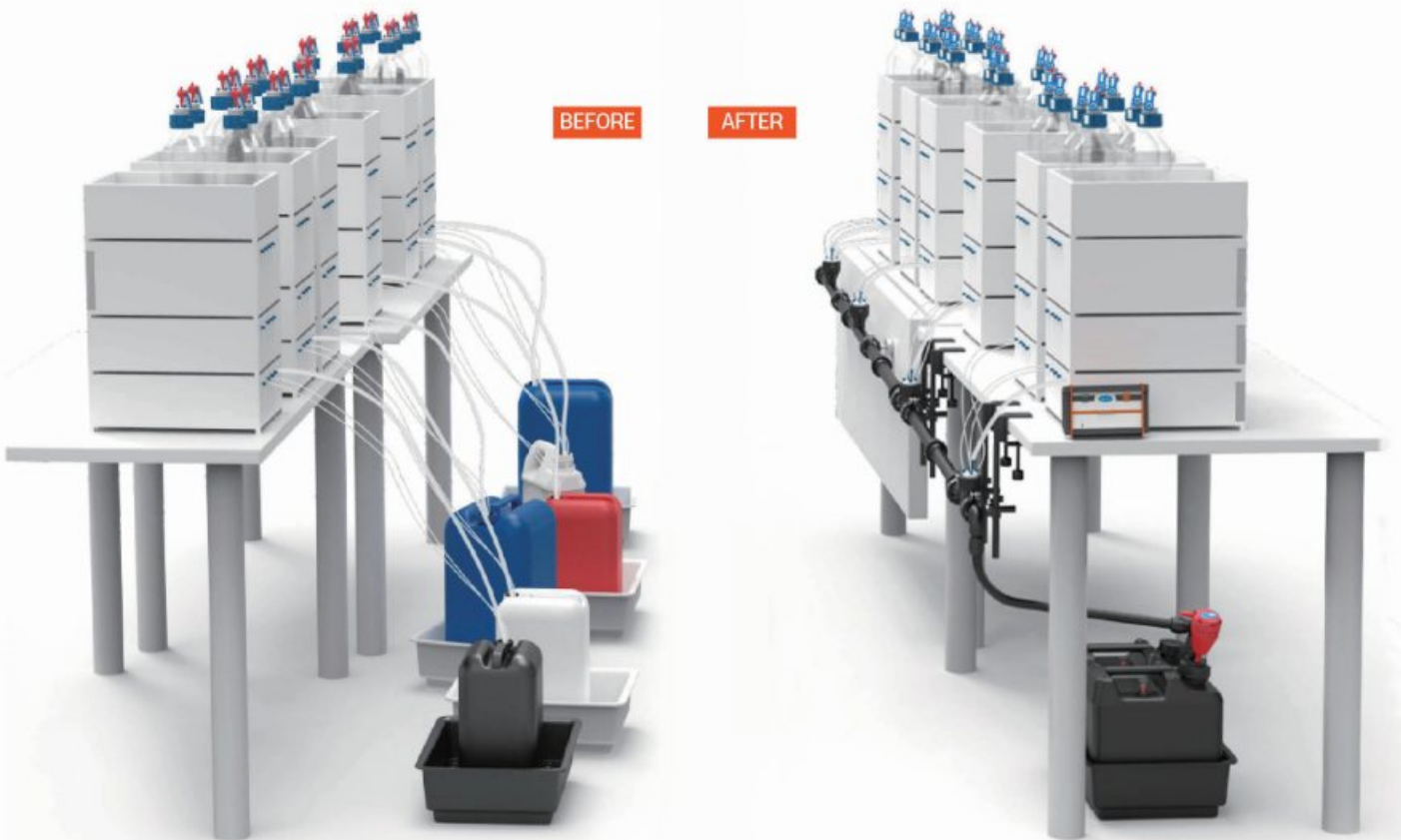
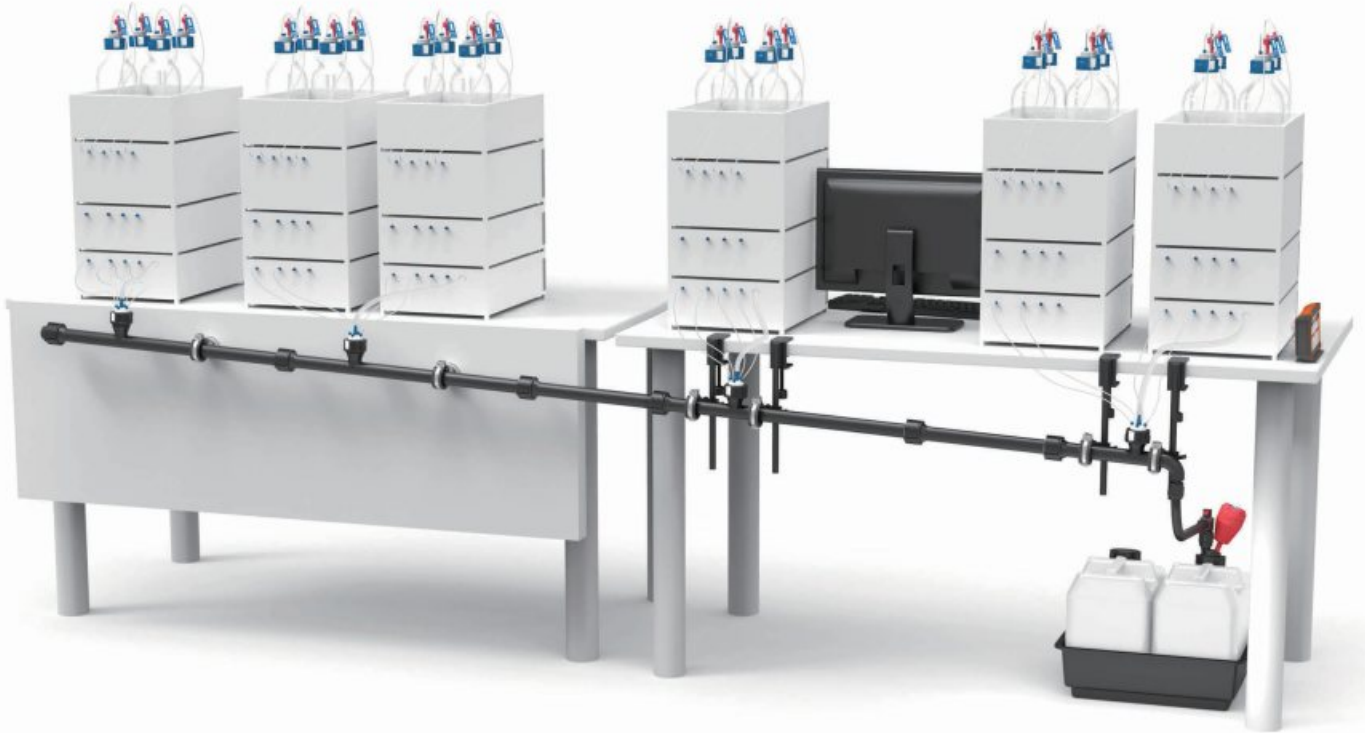


Blind plug for capillary connection

- PFA, colourless

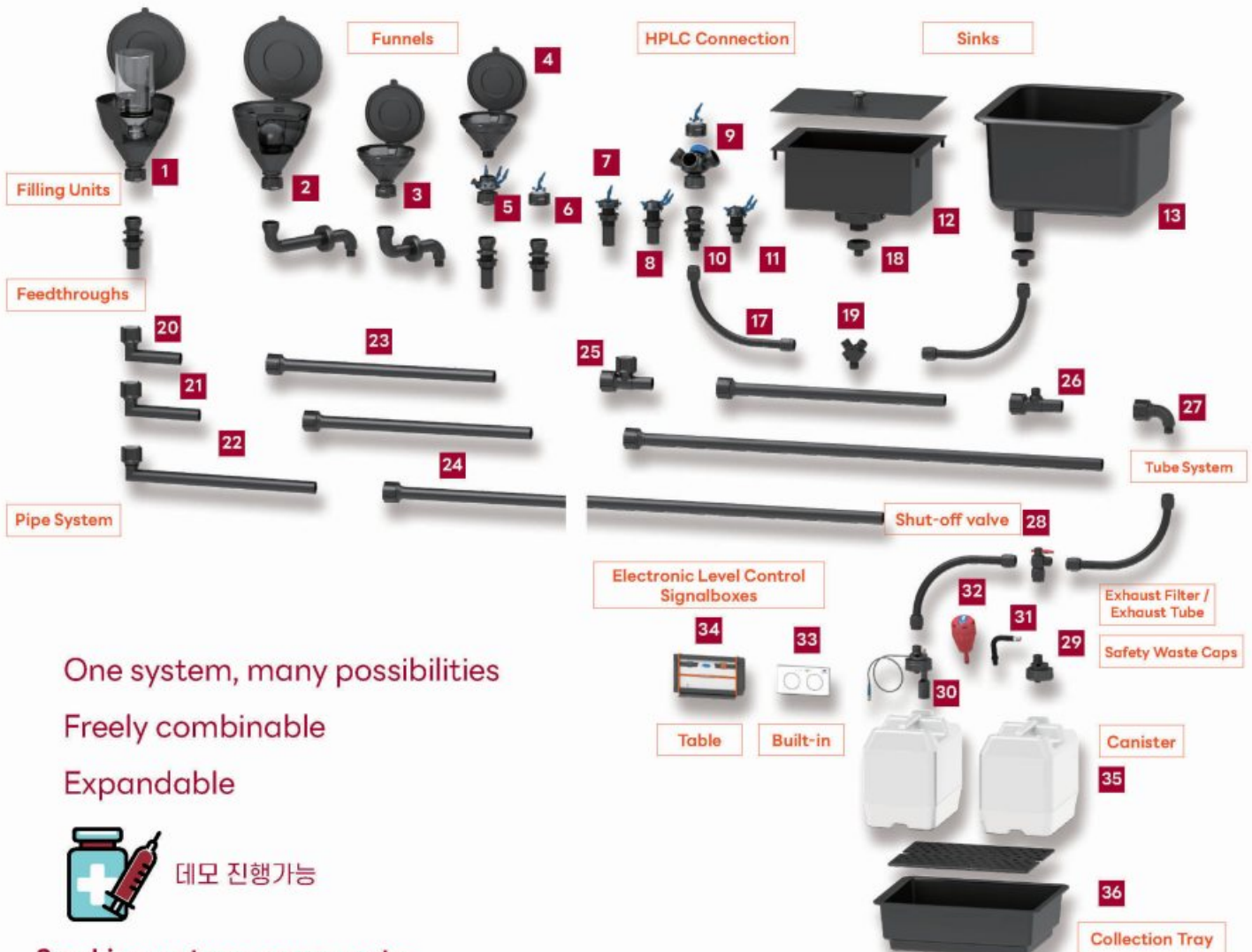
4x





SymLine system

구성 살펴보기



One system, many possibilities

Freely combinable

Expandable



데모 진행가능

SymLine system components

- 1 317 633 Funnel ARNOLD with sieve
- 2 317 638 Funnel ARNOLD with ball valve
- 3 318 962 Funnel MARCO
- 4 450 120 Funnel LISA-Extension
- 5 450 045 Safety Waste Cap LISA
- 6 306 498 Safety Waste Cap
- 7 106 412 HPLC Table feedthrough pipe
- 8 106 669 HPLC Table feedthrough flat pipe
- 9 306 509 4-in-1 Collector NICOLE
- 10 106 455 Table feedthrough tube connection
- 11 106 616 HPLC Table feedthrough flat tube
- 12 117 989 Sink with cover
- 13 118 003 Sink
- 14 106 450 Table feedthrough with pipe connection
- 15 106 601 Rear wall feedthrough for ARNOLD
- 16 106 612 Rear wall feedthrough for MARCO
- 17 106 569 SymLine FlexTube / 106 575 FlexTube Pro
- 18 106 584 Thread adapter sink/tube
- 19 106 476 Tube connector Y-Distributor
- 20 106 430 Connection pipe, angled 150 mm
- 21 106 438 Connection pipe, angled 200 mm
- 22 106 440 Connection pipe, angled 500 mm
- 23 106 690 Connection pipe, straight 600 mm
- 24 106 700 Connection pipe, straight 1200 mm
- 25 106 712 T-Piece for pipes
- 26 106 711 T-Piece for pipes with tube connection
- 27 106 456 Curved element pipe to tube
- 28 106 475 Shut-off valve
- 29 306 482 Safety Waste Cap
- 30 106 480 Safety Waste Cap electr. level control
- 31 106 490 Exhaust tube
- 32 410 535 Exhaust filter
- 33 106 548 Built-in Signalbox2
- 34 108 088 Table Signalbox
- 35 700 003 Canister
- 36 117 985 Collection tray with removable base insert

VWR® Single Pipette

Feature

- Plunger 누를시 가장 적은 힘 요구
- 손의 피로를 최소화하도록 설계
- 높은 정확도와 정밀성으로 일관된 결과 제공
- 잠금 장치 기능
- FULL 오토클레이브 가능(121 °C , 20분)
- 일반 Tip과 호환가능
- 다양한 볼륨 선택 가능



ORDERING INFORMATION

VWR PHP PIPETTE Variable, 가변형

Description	Volume	P/N
PHP - SINGLE CHANNEL VV PIPETTE 0.1-2.5	0.1-2.5uL	VWRA613-6688
PHP - SINGLE CHANNEL VV PIPETTE 0.5-10	0.5-10uL	VWRA613-6689
PHP - SINGLE CHANNEL VV PIPETTE 2-20	2-20uL	VWRA613-6690
PHP - SINGLE CHANNEL VV PIPETTE 5-50	5-50uL	VWRA613-6691
PHP - SINGLE CHANNEL VV PIPETTE 10-100	10-100uL	VWRA613-6692
PHP - SINGLE CHANNEL VV PIPETTE 20-200	20-200uL	VWRA613-6693
PHP - SINGLE CHANNEL VV PIPETTE 100-1000	100-1000uL	VWRA613-6694
PHP - SINGLE CHANNEL VV PIPETTE 1000-5000	1000-5000uL	VWRA613-6695
PHP - SINGLE CHANNEL VV PIPETTE 1000-10000	1000-10000uL	VWRA613-6696

VWR PHP PIPETTE Fixed, 고정형

Description	Volume	P/N
PHP - SINGLE CHANNEL FIX VOL PIPETTE 2.5	2.5uL	VWRA613-6697
PHP - SINGLE CHANNEL FIX VOL PIPETTE 5	5uL	VWRA613-6698
PHP - SINGLE CHANNEL FIX VOL PIPETTE 10	10uL	VWRA613-6699
PHP - SINGLE CHANNEL FIX VOL PIPETTE 20	20uL	VWRA613-6700
PHP - SINGLE CHANNEL FIX VOL PIPETTE 25	25uL	VWRA613-6701
PHP - SINGLE CHANNEL FIX VOL PIPETTE 50	50uL	VWRA613-6702
PHP - SINGLE CHANNEL FIX VOL PIPETTE 100	100uL	VWRA613-6703
PHP - SINGLE CHANNEL FIX VOL PIPETTE 200	200uL	VWRA613-6704
PHP - SINGLE CHANNEL FIX VOL PIPETTE 250	250uL	VWRA613-6705
PHP - SINGLE CHANNEL FIX VOL PIPETTE 500	500uL	VWRA613-6706
PHP - SINGLE CHANNEL FIX VOL PIPETTE 1000	1000uL	VWRA613-6707
PHP - SINGLE CHANNEL FIX VOL PIPETTE 2000	2000uL	VWRA613-6708
PHP - SINGLE CHANNEL FIX VOL PIPETTE 5000	5000uL	VWRA613-6709
PHP - SINGLE CHANNEL FIX VOL PIPETTE 10000	10000uL	VWRA613-6710

VWR® ELECTRONIC Single Pipette

Feature

- 직관적인 그래픽 인터페이스로 작동이 용이
- 경량 구조로 장시간 사용 시에도 피로도가 낮아 원활한 피펫팅 가능
- 정확한 피펫팅을 위한 최첨단 스페터 모터와 자동 감지 마그네틱 피스톤 내장
- 실험실에서 자주 사용되는 5가지 자동 피펫팅 모드 지원
- Calibrated as per ISO 8655 in ISO 17045 Accredited Lab
- 지능형 절전 모드로 미사용 시 배터리를 절약하여 완충 후 5시간 연속 사용 가능
- 자동 충전 거치대 옵션 선택 가능
- 최소 볼륨 : 0.5 µl & 최대 볼륨 : 5,000 µl



ORDERING INFORMATION

ELECTRONIC PIPETTE - Arianle, 가변형

Description	Volume	P/N
Electronic Pipette Single Ch 0.5-10	0.5-10uL	VWRA613-6689
Electronic Pipette Single Ch 5-100	5-100uL	VWRA613-6690
Electronic Pipette Single Ch 10-200	10-200uL	VWRA613-6691
Electronic Pipette Single Ch 50-1000	50-1000uL	VWRA613-6692
Electronic Pipette Single Ch 250-5000	250-5000uL	VWRA613-6693
Electronic Pipette Single Ch 100-1000C	100-1000CuL	VWRA613-6694
Electronic Pipette Single Ch 1000-5000	1000-5000uL	VWRA613-6695

ACC

Description	P/N
Electronic Pipette Charging Stand	VWRA613-6686
Acrylic Stand for Electronic Pipette	VWRA613-6687

VWR® Multi pipette



VWR Multi pipette (BASIC)



VWR Multi pipette (ELECTRONIC)

ORDERING INFORMATION

MULI Channel PIPEETTE (BASIC)

CHANNEL	Description	Volume	P/N
8 CHANNEL	PHP 8 Channel Pipette 0.5 - 10	0.5-10uL	VWRA613-6711
	PHP 8 Channel Pipette 2 - 20	2-20uL	VWRA613-6712
	PHP 8 Channel Pipette 5- 50	5-50uL	VWRA613-6713
	PHP 8 Channel Pipette 10 - 100	10-100uL	VWRA613-6714
	PHP 8 Channel Pipette 20 - 200	20-200uL	VWRA613-6715
	PHP 8 Channel Pipette 30 - 300	30-300uL	VWRA613-6716
12 CHANNEL	PHP 12 Channel Pipette 0.5 - 10	0.5-10uL	VWRA613-6717
	PHP 12 Channel Pipette 2 - 20	2-20uL	VWRA613-6718
	PHP 12 Channel Pipette 5 - 50	5-50uL	VWRA613-6719
	PHP 12 Channel Pipette 10 - 100	10-100uL	VWRA613-6720
	PHP 12 Channel Pipette 20 - 200	20-200uL	VWRA613-6721
	PHP 12 Channel Pipette 30 - 300	30-300uL	VWRA613-6722
ACC	PHP Carousel stand for 6 pipettes	PHP Carousel Stand for 6 pipette	VWRA613-6723
	PHP Shelf mounting stand for Pipette	PHP shelf mounting stand for pipette	VWRA613-6724

PHP-MULTI CHANNEL PIPETTE (ELECTRONIC)

CHANNEL	Description	Volume	P/N
12 CHANNEL	Electronic Pipette 12 Channel 0.5-10	0.5-10uL	VWRA613-6681
	Electronic Pipette 12 Channel 2-20	2-20uL	VWRA613-6682
	Electronic Pipette 12 Channel 5-100	5-100uL	VWRA613-6683
	Electronic Pipette 12 Channel 10-200	10-200uL	VWRA613-6684

Zippette™ Classic Bottle-Top Dispensers

Feature

- 정확하고 쉬운 dispensing
- 미세조정기능으로 정확한 분주 재현
- 습식 부품은 모두 내화학성, 121°C에서 오토클레이브 가능
- PTFE 피스톤과 유리 배럴은 손쉬운 제거와 세척 가능

Bottle-Top Dispensers

용매병 디스펜서



ORDERING INFORMATION

BOTTLE TOP DISPENSER

Type	Description	Volume	P/N
Without Re-Circulation	Without Re-Circulation BTD 0.25 to 2.5	0.25-2.5mL	VWRA612-6628
	Without Re-Circulation BTD 0.5 to 5	0.5-5mL	VWRA612-6629
	Without Re-Circulation BTD 1 to 10	1-10mL	VWRA612-6630
	Without Re-Circulation BTD 2.5 to 25	2.5-25mL	VWRA612-6631
	Without Re-Circulation BTD 2.5 to 30	2.5-30mL	VWRA612-6632
	Without Re-Circulation BTD 5 to 50	5-50mL	VWRA612-6633
	Without Re-Circulation BTD 10 to 100	10-100mL	VWRA612-6634
With Re-Circulation	With Re-Circulation BTD 0.25 to 2.5	0.25-2.5mL	VWRA612-6635
	With Re-Circulation BTD 0.5 to 5	0.5-5mL	VWRA612-6636
	With Re-Circulation BTD 1 to 10	1-10mL	VWRA612-6637
	With Re-Circulation BTD 2.5 to 25	2.5-25mL	VWRA612-6638
	With Re-Circulation BTD 2.5 to 30	2.5-30mL	VWRA612-6639
	With Re-Circulation BTD 5 to 50	5-50mL	VWRA612-6644
	With Re-Circulation BTD 5 to 60	5-60mL	VWRA612-6649
	With Re-Circulation BTD 10 to 100	10-100mL	VWRA612-6668

VWR® Powerpette Pro Pipette controller

ORDERING INFORMATION

PIPETTE CONTROLLER

Description	Unit	P/N
Pipette controller Powerpette Pro, universal charger	1	VWRI612-4552
Powerpette Plus(Green)	1	VWRI613-4448

ACC

Description	Pore	Unit	P/N
Accessories	0.2um	5	612-3681
	0.45um	5	612-3678
Replacement silicone pipette holder	-	1	612-3679

Pipette Aid

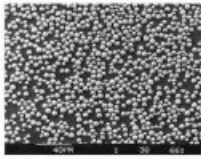
피펫 에이드



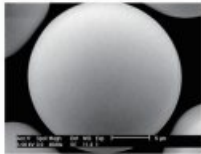


MADE IN GERMANY

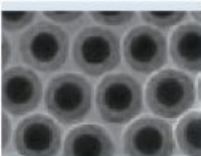
HPLC / GC Column



NUCLEOSIL®



NUCLEODUR®



NUCLEOSHELL®



GC Column

HPLC COLUMN

NUCLEOSIL®

분석 실험에 범용적으로 사용되는 MN(Macherey-Nagel)사 대표 HPLC column

- 40여년 이상 HPLC에서 최고 품질을 보장하는 컬럼
- 균일한 Silica 구조로 광범위한 어플리케이션에 적용 가능
- 다양한 고정상 제공

NUCLEODUR®

완벽한 구형 및 Smooth한 표면구조 Silica로 고압에 안정적인 분리능

- 완전합성의 Type B 3세대 Silica
- 뛰어난 표면 미세구조
- 낮은 메탈 함량의 고순도 Silica 사용으로 Tailing 없이 대칭 형태의 Peak로 분리

NUCLEOSHELL®

Solid core 위에 균질한 Silica shell을 입힌, 최신 Core-shell technology

- 일반 Silica 구조에 비해 짧은 Diffusion path로 Sharp한 Peak 가능
- Shell 구조를 통한 빠른 유속과 분리능 확보로 고압의 UHPLC에 최적
- 전체 다공성 입자 컬럼 대비 더 큰 처리량과 더 빠른 분리 시간 제공

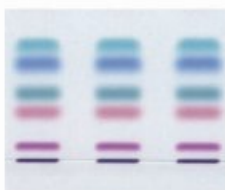
GC COLUMN

OPTIMA®

고온 조건에서 뛰어난 안전성을 가지는 MN사 대표 GC Column

- 우수한 분리능 및 다양한 선택성
- 안정성 및 재현성이 뛰어나 신뢰할 수 있는 결과 산출
- 고온에서도 낮은 Bleed 생성

TLC 박층크로마토그래피



FEATURE

- 간단한 시료 전처리 과정
- UV, 유도체화에 따른 육안 확인 가능
- 여러 시료를 동일한 조건으로 동시 분석 가능
- 이차원적인 분리가 가능
- 즉시 사용 할 수 있는 사전 코팅된 Plate
- Mass Spectrometry와 함께 사용 가능

MOST COMMONLY USED SILICA GEL LAYERS

SIL G

- Standard layer (soft)
- Available on glass plates, polyester, aluminum sheets
- Thicker layers for preparative TLC on glass plates

ADAMANT

- Outstanding hardness and abrasion resistance
- Excellent separation efficiency
- Low-noise background of the layer
- Available on glass plates

SIL HD

- Hard layer with good abrasion resistance
- High luminosity
- Brilliant staining properties
- Excellent separation efficiency
- Good wettability for precise colorization result
- Low-noise background of the layer
- Available on glass plates

GC COLUMN USP Listing

SPECIFICATION

<i>Code</i>	<i>Specifications</i>	<i>MN GC phases</i>
USP G1 / G2	dimethylpolysiloxane oil	OPTIMA® 1 OPTIMA® 1 MS OPTIMA® 1 MS Accent OPTIMA® 1-TG PERMABOND® SE-30 PERMABOND® P-100
USP G3	50 % phenyl - 50 % methylpolysiloxane	OPTIMA® 17 OPTIMA® 17 MS OPTIMA® 17-TG
USP G6	trifluoropropylmethylpolysiloxane	OPTIMA® 210
USP G7	50 % 3-cyanopropyl - 50 % phenylmethylpolysiloxane	OPTIMA® 225
USP G16	polyethylene glycol (average molecular weight~ 15 000); high molecular weight compound of polyethylene glycol and diepoxide	OPTIMA® WAX OPTIMA WAXplus® PERMABOND® CW 20 M PERMABOND® CW 20 M-DEG FS-CW 20 M-AM
USP G19	25 % phenyl - 25 % cyanopropyl - 50 % methylsiloxane	OPTIMA® 225
USP G25	high molecular weight compound of polyethylene glycol and diepoxide, which is esterified with terephthalic acid	OPTIMA® FFAP OPTIMA® FFAPplus PERMABOND® FFAP
USP G27	5 % phenyl - 95 % methylpolysiloxane	OPTIMA® 5 OPTIMA® 5 Amine OPTIMA® 5 HT OPTIMA® 5 MS OPTIMA® 5 MS Accent PERMABOND® SE-52
USP G28	25 % phenyl - 75 % methylpolysiloxane	OPTIMA® 35 MS
USP G32	20 % phenylmethyl - 80 % dimethylpolysiloxane	OPTIMA® 35 MS
USP G35	high molecular weight compound of polyethylene glycol and diepoxide, which is esterified with nitroterephthalic acid	OPTIMA® FFAP OPTIMA® FFAPplus PERMABOND® FFAP
USP G36	1 % vinyl - 5 % phenylmethylpolysiloxane	OPTIMA® 5 OPTIMA® 5 Amine OPTIMA® 5 HT OPTIMA® 5 MS OPTIMA® 5 MS Accent PERMABOND® SE-54 HKW
USP G38	dimethylpolysiloxane oil	OPTIMA® 1 OPTIMA® 1 MS OPTIMA® 1 MS Accent OPTIMA® 1-TG PERMABOND® SE-30 PERMABOND® P-100
USP G42	35 % phenyl - 65 % dimethylpolysiloxane	OPTIMA® 35 MS
USP G43	6 % cyanopropylphenyl - 94 % dimethylpolysiloxane	OPTIMA® 1301 OPTIMA® 1301 MS OPTIMA® 624 OPTIMA® 624 LB
USP G46	14 % cyanopropylphenyl - 86 % methylpolysiloxane	OPTIMA® 1701 OPTIMA® 1701 MS
USP G49	proprietary derivatized phenyl groups on a polysiloxane backbone	OPTIMA® 6-3

HPLC COLUMN USP Listing

SPECIFICATION

<i>Code</i>	<i>Specifications</i>	<i>MN HPLC phases</i>
USP L1	octadecyl silane chemically bonded to porous silica particles 1.5 to 10 µm diameter, or monolithic silica gel	NUCLEODUR® C ₁₈ ec NUCLEODUR® C ₁₈ Gravity NUCLEODUR® C ₁₈ Gravity-SB NUCLEODUR® C ₁₈ HTec NUCLEODUR® C ₁₈ Isis NUCLEODUR® C ₁₈ PAH NUCLEODUR® C ₁₈ Pyramid NUCLEODUR® PolarTec NUCLEODUR® Sphinx RP NUCLEOSHELL® RP 18 NUCLEOSHELL® RP 18plus NUCLEOSIL® C ₈ NUCLEOSIL® C ₈ AB NUCLEOSIL® C ₈ HD NUCLEOSIL® C ₈ MPN NUCLEOSIL® C ₈ PAH NUCLEOSIL® C ₈ PPN
USP L3	porous silica particles, 1.5 to 10 µm diameter, or monolithic silica gel	NUCLEODUR® SiOH NUCLEOSIL® SiOH
USP L7	octyl silane chemically bonded to totally porous silica particles, 1.8 to 10 µm diameter	NUCLEODUR® C ₈ ec NUCLEODUR® C ₈ Gravity NUCLEOSIL® C ₈ NUCLEOSIL® C ₈ HD
USP L8	an essentially monomolecular layer of aminopropyl silane chemically bonded to totally porous silica gel support, 1.5 to 10 µm diameter	NUCLEODUR® NH ₂ / NH ₂ -RP NUCLEOSIL® Carbohydrate NUCLEOSIL® NH ₂ / NH ₂ -RP
USP L9	irregular or spherical, totally porous silica gel having a chemically bonded, strongly acidic cation-exchange coating, 3 to 10 µm diameter	NUCLEOSIL® SA
USP L10	nitrile groups chemically bonded to porous silica particles, 1.5 to 10 µm diameter	NUCLEODUR® CN / CN-RP NUCLEOSIL® CN / CN-RP
USP L11	phenyl groups chemically bonded to porous silica particles, 1.5 to 10 µm diameter	NUCLEODUR® Phenyl-Hexyl NUCLEODUR® π ² NUCLEOSHELL® Phenyl-Hexyl NUCLEODUR® Sphinx RP NUCLEOSIL® NUCLEOSIL® C ₆ H ₅

HPLC COLUMN USP Listing

SPECIFICATION

Code	Specifications	MN HPLC phases
USP L14	silica gel having a chemically bonded, strongly basic quaternary ammonium anion-exchange coating, 5 to 10 µm diameter	NUCLEOSIL® SB
USP L16	dimethylsilane chemically bonded to porous silica particles, 5 to 10 µm diameter	NUCLEOSIL® C ₂
USP L17	strong cation-exchange resin consisting of sulfonated cross-linked PS/DVB copolymer in the H form, 6 to 12 µm diameter	NUCLEOGEL® ION 300 OA NUCLEOGEL® SUGAR 810 H
USP L19	strong cation-exchange resin consisting of sulfonated cross-linked PS/DVB copolymer in the Ca form, 5 to 15 µm particle size	NUCLEOGEL® SUGAR 810 Ca NUCLEOGEL® SUGAR Ca
USP L20	dihydroxypropane groups chemically bonded to porous silica particles, 5 to 10 µm diameter	NUCLEOSIL® OH (Diol)
USP L21	a rigid, spherical styrene-divinylbenzene copolymer, 5 to 10 µm diameter	NUCLEOGEL® RP
USP L22	a cation-exchange resin made of porous polystyrene gel with sulfonic acid groups, about 10 µm in size	NUCLEOGEL® SCX
USP L23	an anion-exchange resin made of porous polymethacrylate or polyacrylate gel with quaternary ammonium groups, about 10 µm in size	NUCLEOGEL® SAX
USP L26	butyl silane chemically bonded to totally porous silica particles, 5 to 10 µm diameter	NUCLEODUR® C ₄ ec NUCLEOSIL® C ₄ NUCLEOSIL® C ₄ MPN
USP L32	a chiral ligand-exchange resin packing · L-proline copper complex covalently bonded to irregular shaped silica particles, 5 to 10 µm diameter	NUCLEOSIL® CHIRAL-1
USP L34	strong cation-exchange resin consisting of sulfonated cross-linked PS-DVB copolymer in the Pb form, 5 to 7 µm particle size	NUCLEOGEL® SUGAR Pb
USP L36	a 3,5-dinitrobenzoyl derivative of L-phenylglycine covalently bonded to 5 µm aminopropyl silica	NUCLEOSIL® CHIRAL-3
USP L40	cellulose tris-(3,5-dimethylphenylcarbamate) coated porous silica particles, 5 to 20 µm diameter	NUCLEOCEL DELTA
USP L43	pentafluorophenyl groups chemically bonded to silica particles by a propyl spacer, 1.5 to 10 µm diameter	NUCLEODUR® PFP NUCLEOSHELL® PFP
USP L45	beta-cyclodextrin bonded to porous silica particles, R,S-hydroxypropyl ether derivative, 3 to 10 µm diameter	NUCLEODEX β-OH, β-PM
USP L58	strong cation-exchange resin consisting of sulfonated cross-linked PS/DVB copolymer in the Na form, 6 to 30 µm diameter	NUCLEOGEL® SUGAR Na
USP L60	spherical porous silica gel, particle size of 10 µm diameter or smaller, the surface of which has been covalently modified with alkyl amide groups and endcapped	NUCLEODUR® PolarTec NUCLEOSIL® C ₁₈ Nautilus
USP L75	A chiral-recognition protein, bovine serum albumin (BSA), chemically bonded to silica particles, about 7 µm in diameter, with a pore size of 300 Angstrom	RESOLVOSIL BSA-7



Summary of MN ready-to-use layers

Standard silica particle size 5–17 µm

Phase	Support*	Layer
ADAMANT	G	silica 60, improved binder system, optimized particle size distribution
SIL G	G P A Ax	silica 60, standard grade
DURASIL	G	silica 60, special binder system
SILGUR	G Ax	silica 60 with kieselguhr concentrating zone

Unmodified silica for HPTLC particle size 2–10 µm

Phase	Support*	Layer
Nano-SILGUR	G Ax	nano silica 60 with kieselguhr concentrating zone
Nano-ADAMANT	G	nano silica 60, improved binder system, optimized particle size distribution
Nano-SIL	G A Ax	nano silica 60, standard grade
Nano-DURASIL	G	nano silica 60, special binder system

Modified silica for HPTLC particle size 2–10 µm

Phase	Support*	Layer
Nano-SIL C18-50 / Nano-SIL C18-100	G	nano silica with partial or complete C ₁₈ modification
RP-18 W/UV ₂₅₄	G A	nano silica with partial octadecyl modification, wettable with water
RP-2/UV ₂₅₄	G A	silanized silica = dimethyl-modified nano silica 60
Nano-SIL CN	G A	cyano-modified nano silica
Nano-SIL NH ₂	G A	amino-modified nano silica
Nano-SIL DIOL	G	diol-modified nano silica

Aluminum oxide

Phase	Support*	Layer
Alox-25 / Alox N	G P A	aluminum oxide

Cellulose, Unmodified and modified

Phase	Support*	Layer
CEL 300	G P A	native fibrous cellulose MN 300
CEL 400	G P	microcrystalline cellulose MN 400 (AVICEL®)
CEL 300 PEI	P	polyethyleneimine-impregnated cellulose ion exchanger
CEL 300 AC	P	acetylated cellulose MN 300

POLYAMID-6

Phase	Support*	Layer
POLYAMID-6	P	perlon = ε-polycaprolactame

Layers for special separations

Phase	Support*	Layer
CHIRALPLATE	G	RP silica with Cu ²⁺ ions and chiral reagent, for enantiomer separation of amino acids
SIL N-HR	P	high purity silica 60, special binder system, higher gypsum content
SIL G-25 HR	G	high purity silica 60 with gypsum, recommended for aflatoxin analysis
SIL G-25 Tenside	G	silica G with ammonium sulfate for separation of surfactants
Nano-SIL PAH	G	nano silica with special impregnation for PAH analysis
IONEX-25 SA-Na	P	mixed layer of strongly acidic cation exchanger and silica
IONEX-25 SB-AC	P	mixed layer of strongly basic anion exchanger and silica
Alox / CEL-AC-Mix	G	mixed layer of aluminum oxide and acetylated cellulose
SILCEL-Mix	G	mixed layer of cellulose and silica

G = Glass plates

P = POLYGRAM® polyester sheets

A = ALUGRAM® aluminum sheets

Ax = ALUGRAM® Xtra aluminum sheets

CHROMABOND® QuEChERS

Select the right QuEChERS products for your sample!

두 단계마다 적절한 CHROMABOND QuEChERS Mix를 제공
표준 방법에 따라 내용물은 미리 무게를 측정한 후 혼합





STEP 1 - Extraction and salting-out

Method	Sample weight	Solvent	Content of mix	Mix P/N
Original non-buffered ^[1]	10 g	10 mL acetonitrile	4g MgSO ₄ , 1g NaCl	Mix XII
EN 15662:2008 citrate-buffered ^[2]	10 g	10 mL acetonitrile	4g MgSO ₄ , 1g NaCl, 0.5g Na ₂ H citrate · 1.5 H ₂ O, 1g Na ₃ citrate · 2H ₂ O	Mix I
AOAC 2007.01 acetate-buffered ^[3]	15 g	15 mL 1% acetic acid in acetonitrile	6g MgSO ₄ , 1.5g Na acetate	Mix II

Samples with less than 80 % water content require the addition of sufficient cold water.
The amount of water needed is listed in the table below.^[1]

Sample type	Sample weight	Water added	Note
Fruit and vegetables > 80 % water content	10 g	-	
Fruit and vegetables 25-80 % water content	10 g	x g	x = 10 g minus water amount in sample
Original non-buffered	10 g	10 g	
Cereals	5 g	10 g	
Dried fruit	5 g	7.5 g	Water can be added during comminution step
Honey	5 g	10 g	
Spices	2 g	10 g	

STEP 2 - Clean-up by dSPE

Sample property	Content of mix	EN 15662	AOAC 2007.01
 <p>Low fat content</p> <ul style="list-style-type: none"> ■ Apple ■ Apricot ■ Asparagus ■ Broccoli ■ Pear ■ Pineapple ■ Strawberry 	MgSO ₄ Diamino (PSA)	Mix III	Mix XX
 <p>Moderate content of chlorophyll and carotinoids</p> <ul style="list-style-type: none"> ■ Carrot ■ Lettuce ■ Coffee ■ Tea 	MgSO ₄ Diamino (PSA) Carbon (GCB)	Mix IV	Mix XVII
 <p>Higher content of chlorophyll and carotinoids</p> <ul style="list-style-type: none"> ■ Pepper ■ Spinach ■ Blackberry ■ Raspberry 	MgSO ₄ Diamino (PSA) Carbon (GCB)	Mix V	-
 <p>Higher fat content</p> <ul style="list-style-type: none"> ■ Avocado ■ Cereals ■ Nuts ■ Beef ■ Chicken ■ Pork ■ Dairy products ■ Soil ■ Oils ■ Baby food 	MgSO ₄ Diamino (PSA) C18ec	Mix VI	Mix XIX

CHROMABOND® QuEChERS



MADE IN GERMANY

Adsorbents and what they are used for

MgSO ₄	Removes excess of water
NaCl	For phase separation
CHROMABOND® Diamino (PSA) (Primary Secondary Amine)	Removes organic and fatty acids, sugars and anthocyanin pigments
CHROMABOND® C ₁₈ ec (reversed phase modified silica)	Traps nonpolar compounds, e.g., lipids
CHROMABOND® Carbon (GCB) (Graphitized Carbon Black)	Removes pigments and sterols Note: planar pesticides are also removed

Applications

Method	Procedure	MN Appl. P/N	Matrix	QuEChERS Mix	REF
EN 15662	Procedure for sample matrices with low fat content	306760	Apple, peach, potato, lettuce, honey	Mix I Mix III	730970.3 730646.2
EN 15662	Procedure for sample matrices with moderate Content of chlorophyll and carotinoids	306770	Carrot, savoy, brussels sprouts	Mix I Mix IV	730970.3 730850.2
EN 15662	Procedure for sample matrices with higher content of chlorophyll and carotinoids	306780	Arugula salad, spinach, pepper	Mix I Mix V	730970.3 730358.2
EN 15662	Procedure for sample matrices with higher fat content	306790	Avocado, hazelnut, olive oil, quark, cheese, walnut	Mix I Mix VI	730970.3 730858.2
AOAC 2007.01	Procedure for sample matrices with low fat content	306810	Apple	Mix II Mix XX	730971.3 730670.2
AOAC 2007.01	Procedure for sample matrices with higher fat content	306820	Corn semolina	Mix II Mix XIX	730971.3 730657.2
AOAC 2007.01	Analysis of chloramphenicol from honey	306830	Honey	Mix I or II Mix III or VI	730970 or 730971 730972 or 730974
AOAC 2007.01	Analysis of acrylamide from coffee	306530	Coffee	Mix I Mix XX	730970 730658
AOAC 2007.01	Analysis of mycotoxins in food and feed	306860	Wheat flour, rye flour	Mix XII Mix M1	730648 730779
EURLs	Analysis of quaternary ammonium compounds (QACs) in foodstuffs	306850	Ice cream, honey	Mix I Mix III	730970 730646.2
AOAC 2007.01	Analysis of triphenylmethane dyes from aquaculture samples	306560 306570 306580	Brown trout, shrimp, tuna	Mix II Mix III	730971 730972
FDA C-010.02	Analysis of PFAS in food	306840	Milk, quark, bread, brussels sprouts, spinach, egg	Mix XII Mix L	730648 7300008



Stick format,
aluminum packet



Centrifuge tube,
2 mL



Centrifuge tube,
15 mL



Centrifuge tube,
50 mL

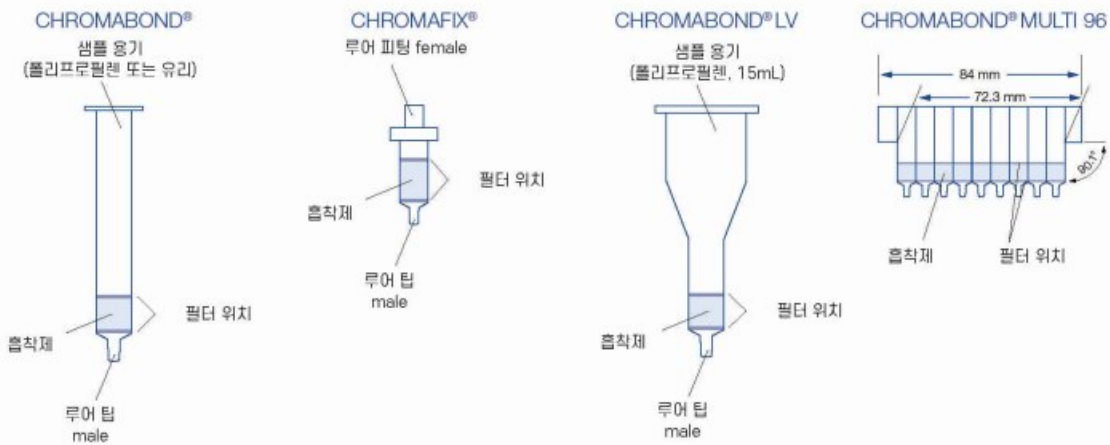
CHROMABOND® SPE

Molecular interactions in SPE

SPE 흡착제: 관심 분석물과의 상호작용 방식에 따라 분류
 SPE의 대표적인 추출방식: 역상, 순상, 이온교환

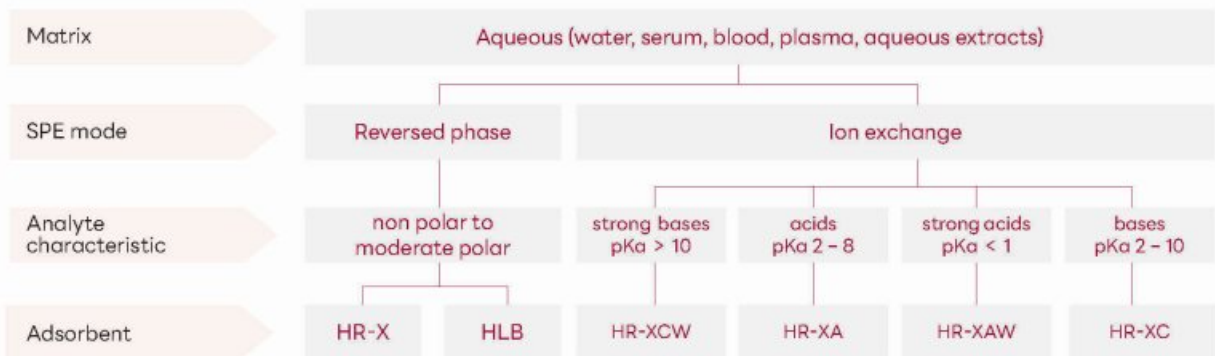
Typical extraction mechanisms

- 역 상 : 수용성 matrix에서 소수성 또는 극성 유기 분석물 추출
- 순 상 : 극성 유기 용매에 녹아있는 극성 분석물 추출
- 이온교환 : 수용액 또는 비극성 유기 샘플에 존재하는 전하를 띤 분석물(양전하, 음전하)을 추출



CHROMABOND® SPE - MODERN POLYMER PHASES SELECTION GUIDE

Stationary phases selection



Cleanroom Products

Contamination control



FEATURE

BERKSHIRE CORPORATION은 미국 오염 제어 제품 업체 중에서 최초로 ISO 9001 표준 등록 인증서를 받았습니다. BERKSHIRE는 고품질의 제품을 제공하기 위해 지속적으로 노력하고 있습니다.



PRODUCTS TESTING

BERKSHIRE의 제품은 출고 전 엄격한 품질 테스트를 거칩니다. 제품 겉면에 표기된 LOT 번호를 홈페이지에 입력하시면 품질테스트 결과를 확인하실 수 있습니다.

PARTICLES AND FIBERS
청결도 테스트



SORBENCY
흡수력 테스트



NON-VOLATILE RESIDUE
비휘발성 잔류물 테스트



PRODUCT GUIDE

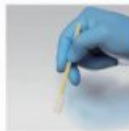
Wipers

ISO Class 3-8 클린룸의 교차오염방지를 위한 다양한 와이퍼 제품



Swabs

다양한 소재의 Swab



Mops and accessories

클린룸을 청결하게 유지하기 위해 특별히 고안된 바닥 및 천장 청소전용 도구



Cleanroom Products

Contamination control

NON-STERILE WIPER

Supra-Wipe 1



Material	100% 폴리에스터
Construction	Knitted
Application	<ul style="list-style-type: none"> 반도체, 전기회로 제조 분야, 장비 및 포장 청소용, 인쇄, 태양전지판 청소 등에 사용
Feature	<ul style="list-style-type: none"> 경제적인 가격 효과적인 오염물질 제거 가능 우수한 내마모성과 흡착성 부드러운 접촉면과 가장자리
ISO Class	3~5
Part P/N	SW10914
EDGE	Sealed Edge
Size	23cm x 23cm
Package	150 pcs x 14 packs

Choice NW 600



Material	55% 셀룰로오스 / 45% 폴리에스터
Construction	Nonwoven
Application	<ul style="list-style-type: none"> 제약 제조, 의료기기, 식품 제조, 실험실 장비 청소, 세척 및 소독 용액 제거 등에 사용
Feature	<ul style="list-style-type: none"> 뛰어난 흡수성과 내구성 적은 입자 수 일반적인 세척 및 소독 용액과 화학적 호환 Autoclave 사용 가능
ISO Class	5~8
Part P/N	CHNW60910
EDGE	Knife-cut
Size	23cm x 23cm
Package	300 pcs x 10 packs

LTP125S (Large Tip)



Material	Polyester
Construction	Knitted
Application	<ul style="list-style-type: none"> 클린룸 세척검증(cleaning validation) 용으로 설계된 전용 스왑
Feature	<ul style="list-style-type: none"> 2중 구조로 되어 있어 내구성이 뛰어남 오토클레이브 가능
ISO Class	4
Part P/N	Lab-Tips-LTP125S
EDGE	Knife-cut
Size	125mm (Head: 25mm, Handle: 100mm)
Package	20 pcs x 25 packs

STERILE WIPER

Gamma Wipe VP



Material	100% 폴리에스터
Construction	Knitted
Application	<ul style="list-style-type: none"> ISO Class 30이상, USP<797>어플리케이션 멸균 장비 표면 세척용, 멸균 기류장치, 배리어, 아이솔레이터 청소 등에 탁월
Feature	<ul style="list-style-type: none"> 감마살균된 제품 AAMI 가이드라인에 따라 10-6 수준의 감마선 조사 및 무균 검증 오염 최소화를 위한 초음파 밀봉 처리 뛰어난 내구성과 흡수성 이소프로필 알코올, 페놀, 표백제 및 4차 암모늄 화합물을 포함한 일반적인 세척 및 소독 용액과 화학적 호환 가능
ISO Class	3~5
Part P/N	GWVPST0940
EDGE	Ultrasonically Sealed
Size	23cm x 23cm
Package	20 pcs x 40 packs

Gamma Wipe 67



Material	55% 셀룰로오스 / 45% 폴리에스터
Construction	Nonwoven
Application	<ul style="list-style-type: none"> ISO Class 50이상, USP<797>어플리케이션 무균실 세척 영역, 멸균 표면 장비 세척, 세척 및 소독 용액 제거
Feature	<ul style="list-style-type: none"> 감마살균된 제품 AAMI 가이드라인에 따라 10-6 수준의 감마선 조사 및 무균 검증 뛰어난 내구성과 흡수성 이소프로필 알코올, 페놀, 표백제 및 4차 암모늄 화합물을 포함한 일반적인 세척 및 소독 용액과 화학적 호환 가능
ISO Class	5~8
Part P/N	GW67ST0980
EDGE	Knife-cut
Size	23cm x 23cm
Package	20 pcs x 80 packs

Easy Clean Tools



Material	스테인리스 스틸(Head), 알루미늄(Handle), 청소 커버 (선택 가능)
Construction	1 Mop Head, 2 Handle
Application	<ul style="list-style-type: none"> 클린룸 환경의 BSC, 후드 등의 효율적인 세척을 위해 설계됨
Feature	<ul style="list-style-type: none"> 손쉬운 조작을 위한 헤드 360° 회전 회전 잠금기능 : 180° 회전 후 잠금 오토클레이브 가능 (최대 121°C, 30분 권장) Knitted polyester elastic covers with knitted polyester padded cover (멸균선택가능) Knitted polyester padded covers (멸균선택가능) Choice® knitted polyester padded covers (멸균선택가능)
ISO Class	1~3
Part P/N	EasyClean® 360 Isolator
EDGE	Knife-cut
Size	1kg 미만
Package	제품별 수량 선택 가능

TWIRL'EM Sterile Sampling Bag

TWIRL'EM Sterile Sampling Bag



MADE IN CANADA

Clear - Closure with 2 round wires

P / N	Package	ml	mm x mm	µm
EPL-3050	500ea x 2pk	60	76 x 127	63
EPL-3070	500ea x 2pk	130	76 x 178	63
EPL-3570	500ea x 2pk	210	89 x 178	76
EPL-4575	500ea x 2pk	355	114 x 190	63
EPL-4590	500ea x 2pk	450	114 x 229	63
EPL-4512	500ea x 2pk	800	114 x 305	63
EPL-4515	500ea x 2pk	1200	114 x 382	63
EPL-5590	500ea x 2pk	650	140 x 229	76
EPL45590	500ea x 2pk	650	140 x 229	101
EPL-5515	500ea x 2pk	1500	140 x 382	76
EPL-7012	250ea x 4pk	1650	178 x 305	76
EPL47012	250ea x 4pk	1650	178 x 305	101
EPL-7015	250ea x 4pk	2500	178 x 382	76

Printed - Closure with 2 round wires

P / N	Package	ml	mm x mm	µm
EPL-3050	500ea x 2pk	60	76 x 127	63
EPL-3070	500ea x 2pk	130	76 x 178	63
EPL-3570	500ea x 2pk	210	89 x 178	76
EPL-4575	500ea x 2pk	355	114 x 190	63
EPL-4590	500ea x 2pk	450	114 x 229	63
EPL-4512	500ea x 2pk	800	114 x 305	63
EPL-4515	500ea x 2pk	1200	114 x 382	63
EPL-5590	500ea x 2pk	650	140 x 229	76
EPL45590	500ea x 2pk	650	140 x 229	101
EPL-5515	500ea x 2pk	1500	140 x 382	76
EPL-7012	250ea x 4pk	1650	178 x 305	76
EPL47012	250ea x 4pk	1650	178 x 305	101
EPL-7015	250ea x 4pk	2500	178 x 382	76



TWIRL'EM Sterile Sampling Bag

TWIRL'EM Sterile Sampling Bag

Clear - Closure with 1 round wire & 1 flat wire

P/N	Package	ml	mm x mm	µm
EPL-3070	500ea x 2pk	130	76 x 178	63
EPL-4590	500ea x 2pk	450	114 x 229	63
EPL-5590	500ea x 2pk	650	140 x 229	76
EPL-5512	500ea x 2pk	1080	140 x 305	76
EPL-7012	250ea x 4pk	1650	178 x 305	76
EPL47012	250ea x 4pk	1650	178 x 305	101
EPL-1012	250ea x 4pk	2250	254 x 305	101
EPL-1015	250ea x 4pk	4000	254 x 382	101



Printed - Closure with 1 round wire & 1 flat wire

P/N	Package	ml	mm x mm	µm
EPL-3070	500ea x 2pk	130	76 x 178	63
EPL-4590	500ea x 2pk	450	114 x 229	63
EPL-5590	500ea x 2pk	650	140 x 229	76
EPL-5512	500ea x 2pk	1080	140 x 305	76
EPL-7012	250ea x 4pk	1650	178 x 305	76
EPL47012	250ea x 4pk	1650	178 x 305	101
EPL-1012	250ea x 4pk	2250	254 x 305	101
EPL-1015	250ea x 4pk	4000	354 x 382	101

Stand up - Printed - Closure with 2 round wires

P/N	Package	ml	mm x mm	µm
EPS-4590N	250ea x 4pk	400	114 x 229	88.9
EPS-6090N	250ea x 4pk	710	150 x 229	88.9



TWIRL'EM Large Format

TWIRL'EM Large Format



MADE IN CANADA

Safety Tabs – Clear – Closure with 2 flat wires

P / N	Package	ml	mm x mm	µm
EDL41212	250ea x 1pk	3,000	305 x 305	101
EDL41214	250ea x 1pk	4,250	305 x 356	101
EDL41216	250ea x 1pk	5,500	305 x 406	101
EDL41218	250ea x 1pk	6,750	305 x 457	101
EDL41220	250ea x 1pk	8,000	305 x 508	101
EDL41224	250ea x 1pk	10,500	305 x 610	101
EDL41228	250ea x 1pk	13,000	305 x 711	101
EDL41520	250ea x 1pk	12,000	382 x 508	101
EDL41524	250ea x 1pk	15,000	382 x 610	101

Safety Tabs – Printed – Closure with 2 flat wires

P / N	Package	ml	mm x mm	µm
EDR41212	250ea x 1pk	3,000	305 x 305	101
EDR41214	250ea x 1pk	4,250	305 x 356	101
EDR41216	250ea x 1pk	5,500	305 x 406	101
EDR41218	250ea x 1pk	6,750	305 x 457	101
EDR41220	250ea x 1pk	8,000	305 x 508	101
EDR41224	250ea x 1pk	10,500	305 x 610	101
EDR41228	250ea x 1pk	13,000	305 x 711	101
EDR41520	250ea x 1pk	12,000	382 x 508	101
EDR41524	250ea x 1pk	15,000	382 x 610	101

Tear-off opening - Clear

P / N	Package	ml	mm x mm	µm
SCL21520	250ea x 2pk	12,000	381 x 508	51
SCL22424	250ea x 2pk	48,000	610 x 610	51
SCL33030	250ea x 1pk	55,000	760 x 760	76
SCL33037	250ea x 1pk	61,000	760 x 940	76
SCL43048	125ea x 1pk	81,000	760 x 1219	101



TWIRL'EM ECOLO

- Twirl'em Ecolo: 녹색 스트랩이 둘러진 제품으로 100% 생분해성 LDPE 로 제작 된 환경 친화 제품

Safety Tabs – Clear – Closure with 2 round wires

P / N	Package	ml	mm x mm	µm
EPL-3070E	500ea x 2pk	130	76 x 178	63
EPL-4590E	500ea x 2pk	450	114 x 229	63
EPL-5590E	500ea x 2pk	650	140 x 229	76
EPL45590E	500ea x 2pk	650	140 x 229	101
EPL-5515E	500ea x 2pk	1500	140 x 382	76
EPL-7012E	250ea x 4pk	1650	178 x 305	76
EPL47012E	250ea x 4pk	1650	178 x 305	101
EPL-7015E	250ea x 4pk	2500	178 x 382	76

Safety Tabs – Printed – Closure with 2 round wires

P / N	Package	ml	mm x mm	µm
EPR-3050E	500ea x 2pk	60	76 x 127	63
EPR-3070E	500ea x 2pk	130	76 x 178	63
EPR-4590E	500ea x 2pk	450	114 x 229	63
EPR-5590E	500ea x 2pk	650	140 x 229	76
EPR45590E	500ea x 2pk	650	140 x 229	101
EPR-7012E	250ea x 4pk	1650	178 x 305	76
EPR47012E	250ea x 4pk	1650	178 x 305	101

Safety Tabs – Clear – Closure with 1 round wire & 1 flat wire

P / N	Package	ml	mm x mm	µm
EFL-3070E	500ea x 2pk	130	76 x 178	63
EFL-4590E	500ea x 2pk	450	114 x 229	63
EFL-5590E	500ea x 2pk	650	140 x 229	76
EFL-5512E	500ea x 2pk	1080	140 x 305	76
EFL-7012E	250ea x 4pk	1650	178 x 305	76
EFL47012E	250ea x 4pk	1650	178 x 305	101
EFL-1012E	250ea x 4pk	2250	254 x 305	101
EFL-1015E	250ea x 4pk	4000	254 x 382	101

Safety Tabs – Printed – Closure with 1 round wire & 1 flat wire

P / N	Package	ml	mm x mm	µm
EFR-3070E	500ea x 2pk	130	76 x 178	63
EFR-4590E	500ea x 2pk	450	114 x 229	63
EFR-5590E	500ea x 2pk	650	140 x 229	76
EFR-7012E	250ea x 4pk	1650	178 x 305	76
EFR47012E	250ea x 4pk	1650	178 x 305	101
EFR-1012E	250ea x 4pk	2250	254 x 305	101
EFR-1015E	250ea x 4pk	4000	254 x 382	101



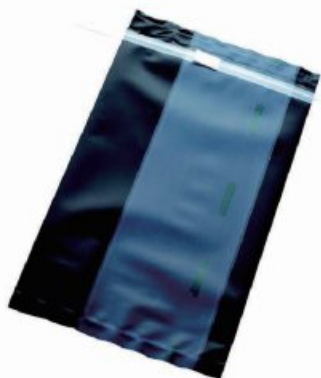
TWIRL' BLUE TWIRL'EM OPAQUE



TWIRL' BLUE

Polyethylene blue sterile bag

<i>P / N</i>	<i>Package</i>	<i>ml</i>	<i>mm x mm</i>	<i>µm</i>
EPR-4590-B	500ea x 2pk	450	114 x 229	63
EPR-5590-B	500ea x 2pk	650	140 x 229	76
EPR-7012-B	250ea x 4pk	1650	178 x 305	76



TWIRL'EM OPAQUE

Safety Tabs - Opaque - Closure with 2 round wires

<i>P / N</i>	<i>Package</i>	<i>ml</i>	<i>mm x mm</i>	<i>µm</i>
EPN-4590	500ea x 2pk	450	114 x 229	63
EPN-4512	500ea x 2pk	900	114 x 305	63
EPN-4515	500ea x 2pk	1200	140 x 382	63



TWIRL'EM CLEANROOM

- 이중포장으로 내·외부 전체 멸균, 클린룸 사용에 적합

Safety Tabs – Clear – Closure with 2 round wires

P / N	Package	ml	mm x mm	µm
EPL-4512S	1000ea x 1pk	800	114 x 305	63
EPL-5590S	1000ea x 1pk	650	140 x 229	76
EPL-5515S	1000ea x 1pk	1500	140 x 382	76
EPL-7012S	1000ea x 1pk	1650	178 x 305	76

Safety Tabs – Printed – Closure with 2 round wires

P / N	Package	ml	mm x mm	µm
EPR-4512S	1000ea x 1pk	800	114 x 305	63
EPR-5590S	1000ea x 1pk	650	140 x 229	76
EPR-5515S	1000ea x 1pk	1500	140 x 382	76
EPR-7012S	1000ea x 1pk	1650	178 x 305	76

Safety Tabs – Clear – Closure with 1 round wire & 1 flat wire

P / N	Package	ml	mm x mm	µm
EFL-5590S	1000ea x 1pk	650	140 x 229	76
EFL45590S	1000ea x 1pk	650	140 x 229	101
EFL-5512S	1000ea x 1pk	1080	140 x 305	76
EFL-7012S	1000ea x 1pk	1650	178 x 305	76
EFL47012S	1000ea x 1pk	1650	178 x 305	101
EFL-1012S	1000ea x 1pk	2250	254 x 305	101
EFL-1015S	1000ea x 1pk	4000	254 x 382	101

Safety Tabs – Printed – Closure with 1 round wire & 1 flat wire

P / N	Package	ml	mm x mm	µm
EFR-5590S	1000ea x 1pk	650	140 x 229	76
EFR45590S	1000ea x 1pk	650	140 x 229	101
EFR-5512S	1000ea x 1pk	1080	140 x 305	76
EFR-7012S	1000ea x 1pk	1650	178 x 305	76
EFR47012S	1000ea x 1pk	1650	178 x 305	101
EFR-1012S	1000ea x 1pk	2250	254 x 305	101
EFR-1015S	1000ea x 1pk	4000	254 x 382	101



Water Sampling Kit

Safety Tabs – Stand-up bag – Printed – Closure with 2 round wires

P / N	Package	ml	mm x mm	µm
KWS-21100	100ea x 1pk	100	76 x 178	63
KWS-22200	100ea x 1pk	300	114 x 229	63



FILTRA-BAG



MADE IN CANADA

FILTRA-BAG with Open Top - Clear

P / N	Package	Description	ml	mm x mm	μm
SCT07012A	100ea x 4pk	For 400 series blenders	1,650	178 x 305	101

FILTRA-BAG with Tear-Off Protection Strip - Clear

P / N	Package	Description	ml	mm x mm	μm
SCT-6090A	100ea x 4pk	For 400 series blenders	710	152 x 229	101
SCT-7012A	100ea x 4pk	For 400 series blenders	1,650	178 x 305	101
SCT-1015A	100ea x 4pk	For 3500 series blenders	2,720	254 x 381	101
SCT-1515A	100ea x 2pk	For 3500 series blenders	4,000	381 x 381	101
SCT-1520A	100ea x 2pk	For 3500 series blenders	12L	381 x 508	101

FILTRA-BAG - Safety Tabs - Clear - Closure with 1 round wire & 1 flat wire

P / N	Package	Description	ml	mm x mm	μm
EFT-6090A	100ea x 4pk	For 400 series blenders	710	152 x 229	101
EFT-7012A	100ea x 4pk	For 400 series blenders	1,650	178 x 305	101
EFT-1015A	100ea x 4pk	For 3500 series blenders	2,720	254 x 381	101
EFT-1515A	100ea x 2pk	For 3500 series blenders	4,000	381 x 381	101
EFT-1520A	100ea x 2pk	For 3500 series blenders	12L	381 x 508	101

STEP BY STEP INSTRUCTION



STEP 01

고형의 샘플을 필터백의 프린트가 있는 면으로 넣습니다.



STEP 02

균질기에 샘플백을 넣고 균질화 작업을 진행합니다.



STEP 03

내부필터를 통과한 샘플을 피펫으로 추출합니다.



SANI-SPONGE

SANI-SPONGE Kit with Dry Sponge

P/N	Package	Description	ml	mm x mm	µm
KSS-61100	100ea x 4pk	Dehydrated sponge	450	114 x 229	63
KSS-61105	100ea x 4pk	Dehydrated sponge with gloves	450	114 x 229	63

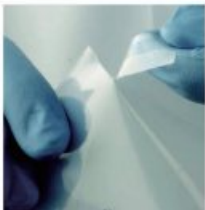
SANI-SPONGE Kit with Wet Sponge

P/N	Package	Description	ml	mm x mm	µm
KSS-67110-DE	20ea x 5pk	DE-Neutralizing buffer	600	160 x 229	101
KSS-67110-LT	20ea x 5pk	Lethen broth	600	160 x 229	101
KSS-67110-NE	20ea x 5pk	Neutralizing buffer	600	160 x 229	101
KSS-67110-BPW	20ea x 5pk	Buffered peptone water	600	160 x 229	101
KSS-67115-DE	20ea x 5pk	DE-Neutralizing buffer with gloves	600	160 x 229	101
KSS-67115-LT	20ea x 5pk	Lethen broth with gloves	600	160 x 229	101
KSS-67115-NE	20ea x 5pk	Neutralizing buffer with gloves	600	160 x 229	101
KSS-67115-BPW	20ea x 5pk	Buffered peptone water with gloves	600	160 x 229	101

- SANI-SPONGE sampling kits are produced in accordance with HACCP, USDA, ACIA and CFIA requirements

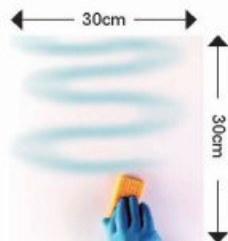


STEP BY STEP INSTRUCTION



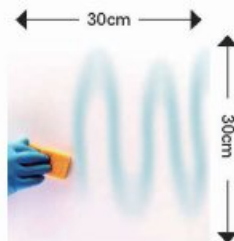
STEP 01

SANI-SPONGE의 겉면 포장을 조심하
뚫어 제품을 꺼냅니다.
(글러브 착용을
권장합니다.)



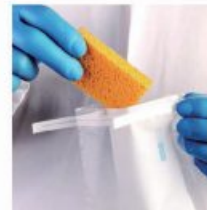
STEP 02

스폰지의 한쪽면으로
표면 샘플링을
진행 합니다.
(30*30cm 의 구역을
권장합니다.)



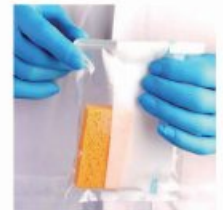
STEP 03

스폰지의 반대면으로
표면 샘플링을
반복합니다.



STEP 04

샘플링이 끝난
스폰지를 다시 샘플링
백에 넣고 입구를
봉합합니다.



STEP 05

제품 겉면에 샘플에
대한 정보를
기입합니다.

SANI-STICK



MADE IN CANADA

SANI-STICK Kit with Wet Sponge

P / N	Package	Description	ml	mm x mm	µm
KSS-67310-DE	10ea x 10pk	Sponge on handle with DE-Neutralizing buffer	600	160 x 229	101
KSS-67310-LT	10ea x 10pk	Sponge on handle with Lethen broth	600	160 x 229	101
KSS-67310-NE	10ea x 10pk	Sponge on handle with Neutralizing buffer	600	160 x 229	101
KSS-67310-BPW	10ea x 10pk	Sponge on handle with Buffered peptone water	600	160 x 229	101
KSS-67315-DE	10ea x 10pk	Sponge on handle with DE-Neutralizing buffer with gloves	600	160 x 229	101
KSS-67315-LT	10ea x 10pk	Sponge on handle with Lethen broth with gloves	600	160 x 229	101
KSS-67315-NE	10ea x 10pk	Sponge on handle with Neutralizing buffer with gloves	600	160 x 229	101
KSS-67315-BPW	10ea x 10pk	Sponge on handle with Buffered peptone water with gloves	600	160 x 229	101

1.5" x 3" biocide-free cellulose sponge gamma irradiated. Pre-moistened with a variety of broths or dry.



Simply squeeze and release the sponge.

No plastic residue will remain on sponge after sampling. Friendly to blending procedures.



No plastic residue will remain on sponge after sampling. Friendly to blending procedures.

STEP BY STEP INSTRUCTION



STEP 01

제품의 포장을 조심히 제거하고 SANI-STICK의 손잡이를 잡고 꺼냅니다.



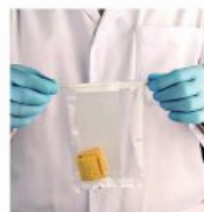
STEP 02

젖은 스폰지를 이용해 표면을 닦아냅니다.



STEP 03

샘플백에 스폰지를 넣고 손잡이의 끝을 잡아당기면 스폰지가 분리됩니다.



STEP 04

멸균백을 3~4회 정도 감아 밀봉합니다.



STEP 05

샘플의 정보를 기입합니다.



SECURE-T™

SECURE-T with Tear-Off Protection Strip - Clear

P / N	Package	Description	ml	mm x mm	µm
SCL-4060	250ea x 4pk	For 80 series blenders	205	102 x 152	76
SCL-5512	500ea x 2pk	For 400 series blenders	1,080	140 x 305	76
SCL-7012	250ea x 4pk	For 400 series blenders	1,650	178 x 305	76
SCL47012	250ea x 4pk	For 400 series blenders	1,650	178 x 305	101
SCL41214	250ea x 2pk	For 3500 series blenders	4.5 L	305 x 356	101
SCL41218	250ea x 1pk	For 3500 series blenders	6.75 L	305 x 457	101
SCL-1520	250ea x 2pk	For 3500 series blenders	12 L	381 x 508	76
SCL41520	250ea x 2pk	For 3500 series blenders	12 L	381 x 508	101

SECURE-T with Tear-Off Protection Strip - Printed

P / N	Package	Description	ml	mm x mm	µm
SCR-7012	250ea x 4pk	For 400 series blenders	1,650	178 x 305	76

BLENDER BAG with Open Top - Clear

P / N	Package	Description	ml	mm x mm	µm
SCL07012	250ea x 4pk	For 80 series blenders	1,650	178 x 305	76
SCL01520	250ea x 2pk	For 400 series blenders	12 L	381 x 508	76

BLENDER BAG with Open Top - Printed

P / N	Package	Description	ml	mm x mm	µm
SCR07012	250ea x 4pk	For 80 series blenders	1,650	178 x 305	76

SECURE-STRIP

P / N	Package	Description	ml	mm x mm	µm
SCLR7012-B	Box dispenser	For 400 series blenders	1,650	178 x 305	76
SCLR7012	4 rolls of 250 units	For 400 series blenders	1,650	178 x 305	76



▶ LOOKING FOR A PERMANENT SOLUTION?

Ask us about our stainless steel dispenser. Another way to make blender bags easy to use in the workplace!



▶ SAMPLING ACCESSORIES TO MAKE LAB WORK EASIER!

Labplas offers a comprehensive range of accessories designed to simplify sample processing and increase efficiency in the lab.

LABCLEAR™



MADE IN USA

가스에서 수분을 제거하고 싶으시다면 랩클리어가 적합합니다.

- LabClear™ 가스 필터는 질소, 헬륨 또는 아르곤과 같은 불활성 운반 가스에서 물, 기름 및 기타 불순물을 제거하도록 설계
- 투명한 캐니스터 내부에 Drierite와 13X 분자체의 혼합물이 들어있는 구조
- Drierite는 수분이 흡착되면 파란색에서 분홍색으로 변하며 투명한 아크릴 캐니스터를 통해 색변화 관찰이 가능
- 탄화수소트랩: 가스 Stream 내에서 탄화수소를 제거



Filter (Moisture Trap)	기체의 수분(H ₂ O)제거
Purifier (Oxygen Trap, Gas Filter)	기체 내 산소(O ₂)제거
Hydrocarbon Traps	기체 내 탄화수소(Hydrocarbon)제거

DISPOSABLE TRAPS

Disposable Moisture Traps

	Fitting	Volume	PSI	Flow Rate	SIZE (Approx) (Inches)	Body
DGF-250	1/4" **	200 ML	125	5 LPM	7 x 2	PVC
DGF-125	1/8" **	200 ML	125	5 LPM	7 x 2	PVC



Fresh Drierite®



Loaded Drierite®

Fill material내 포함되어 있는 지시제의 색 변화로 교체주기 확인



Disposable Hydrocarbon Traps

	Fitting	Volume	PSI	Flow Rate	SIZE (Approx) (Inches)	Body
DGF-CX-250	1/4" **	200 ML	125	5 LPM	7 x 2	PVC
DGF-CX-125	1/8" **	200 ML	125	5 LPM	7 x 2	PVC

** Nickle Plated Brass Tube Compression Fittings

EASYCONNECT GAS FILTER

EasyConnect Gas Filter

	Fitting Size	Volume	Flow Rate	SIZE (Approx) Inches	Body
RGFEZ-250-BASE	1/4" **			3 1/2 x 4 1/2	Aluminum
RGFEZ-125-BASE	1/8" **			3 1/2 x 4 1/2	Aluminum
RGFEZ-200 MEDIA CARTRIDGE		200 ML	5 LPM	8 x 2 1/2	Cast Acrylic
RGFEZ-400 MEDIA CARTRIDGE		400 ML	5 LPM	15 x 2 1/2	Cast Acrylic

** Nickel Plated Brass Tube Compression Fittings



DISPOSABLE OXCLEAR PURIFIERS

Polished Aluminum

	FITTING	FILTRATION (CFT)	VOLUMN (ml)	FLOW (NOR)	O2 REMOVAL NOR / MAX (L)	APPROX SIZE (지름 x 길이, Inches)
DGP-250-R1	1/4" **	1200	120	5	00.30 / 00.11	2 x 5 1/2
DGP-125-R1	1/8" **	1200	120	5	00.30 / 00.11	2 x 5 1/2



Oxygen Indicator

Aluminum with Anodized Finish

Trap 교체 시기 : 연한 녹색 > 회색

	FITTING	FILTRATION (CFT)	VOLUMN (ml)	FLOW (NOR)	O2 REMOVAL NOR / MAX (L)	APPROX SIZE (지름 x 길이, Inches)
DGP-250-R2	1/4" **	1200	120	5	00.30 / 00.11	1 1/4 x 10
DGP-125-R2	1/8" **	1200	120	5	00.30 / 00.11	1 1/4 x 10

** Nickel Plated Brass Tube Compression Fittings



Low Carbon Steel Disposable Purifiers

	FITTING	FILTRATION (CFT)	VOLUMN (ml)	FLOW (NOR)	MAX RATE (LPM)	O2 REMOVAL NOR / MAX (L)	APPROX SIZE (지름 x 길이, Inches)
DGP-R1-300B	1/4" Male NPT	3,600	300	6	30	00.72 / 00.26	2 x 9 3/4
DGP-R1-500B	1/8" Male NPT	6,000	500	10	50	01.20 / 00.42	2 x 14 1/2
DGP-R1-1000B	1/4" Male NPT	12,000	1,000	20	100	02.40 / 00.85	3 1/2 x 10 1/2
DGP-R1-3000B	1/8" Male NPT	36,000	3,000	60	300	07.20 / 02.55	4 x 20

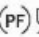
Disposable Indicating Oxygen Trap

	FITTING	FILTRATION (CFT)	FLOW (NOR)	MAX RATE (LPM)	O2 REMOVAL NORM MAX LITERS	APPROX SIZE (지름 x 길이, Inches)
IOT-250	1/4" **	200	1	5	40cc	13/8 x 10 1/4
IOT-125	1/8" **	200	1	5	40cc	13/8 x 10 1/4

** Nickel Plated Brass Tube Compression Fittings



SAFE TOUCH ULTRA GRIP LATEX GLOVES

Feature   

- 우수한 작업감, 뛰어난 신축성과 편안한 착용감
- 인체공학 디자인으로 손의 피로감 완화
- 표면 전체 텍스처 처리

Latex Gloves

라텍스 장갑



P/N	Description	Qty
SFTGL1122A	SFT UltraGrip Latex PF Glove, X-Small size	100EA/box, 10 Box / Carton
SFTGL1122B	SFT UltraGrip Latex PF Glove, Small size	100EA/box, 10 Box / Carton
SFTGL1122C	SFT UltraGrip Latex PF Glove, M size	100EA/box, 10 Box / Carton
SFTGL1122D	SFT UltraGrip Latex PF Glove, L size	100EA/box, 10 Box / Carton
SFTGL1122E	SFT UltraGrip Latex PF Glove, XL size	100EA/box, 10 Box / Carton

NITRILE EXTRA LIGHT GLOVES

Feature    

- FDA 승인 기준인 AQL 2.5 보다 우수한 AQL 1.5의 뛰어난 품질
- 미생물, 화학물질 취급 기준 충족(EN 374)
- 박테리오파지 침투 테스트 포함 EN ISO 374-5 인증
- 초경량 제조로 우수한 착용감과 뛰어난 신축성, 강한 내구성

NITRILE GLOVES

니트릴 장갑



P/N	Description	Qty
VWRI112-4193	Nitrile gloves, NITRILE EXTRA LIGHT Pale purple 240mm, XS size	200EA /Box , 10 Box / Carton
VWRI112-4194	Nitrile gloves, NITRILE EXTRA LIGHT Pale purple 240mm, S size	200EA /Box , 10 Box / Carton
VWRI112-4195	Nitrile gloves, NITRILE EXTRA LIGHT Pale purple 240mm, M size	200EA /Box , 10 Box / Carton
VWRI112-4196	Nitrile gloves, NITRILE EXTRA LIGHT Pale purple 240mm, L size	200EA /Box , 10 Box / Carton
VWRI112-4197	Nitrile gloves, NITRILE EXTRA LIGHT Pale purple 240mm, XL size	200EA /Box , 10 Box / Carton

REVODIX

레보딕스(주)

레보딕스(주) 홈페이지에 방문하시면 더욱 다양한 제품을 만나보실 수 있습니다
www.revodix.co.kr | sales@revodix.co.kr

본 사

(12930) 경기도 하남시 조정대로 150(덕풍동)
하남지식산업센터 ITECO 334호
| TEL 031-790-1907 | FAX 031-790-1908 |

Fluidic 사업부

(12930) 경기도 하남시 조정대로 150(덕풍동)
하남지식산업센터 ITECO 828호
| TEL 031-790-1907 | FAX 070-7835-0203 |

대전지사

(34016) 대전광역시 유성구 테크노3로 65(관평동)
한신에스메카 415호
| TEL 042-824-5167/8 | FAX 042-824-5169 |

REVO STUDIO(홍보관)

(12930) 경기도 하남시 조정대로 150(덕풍동)
하남지식산업센터 ITECO 947호

